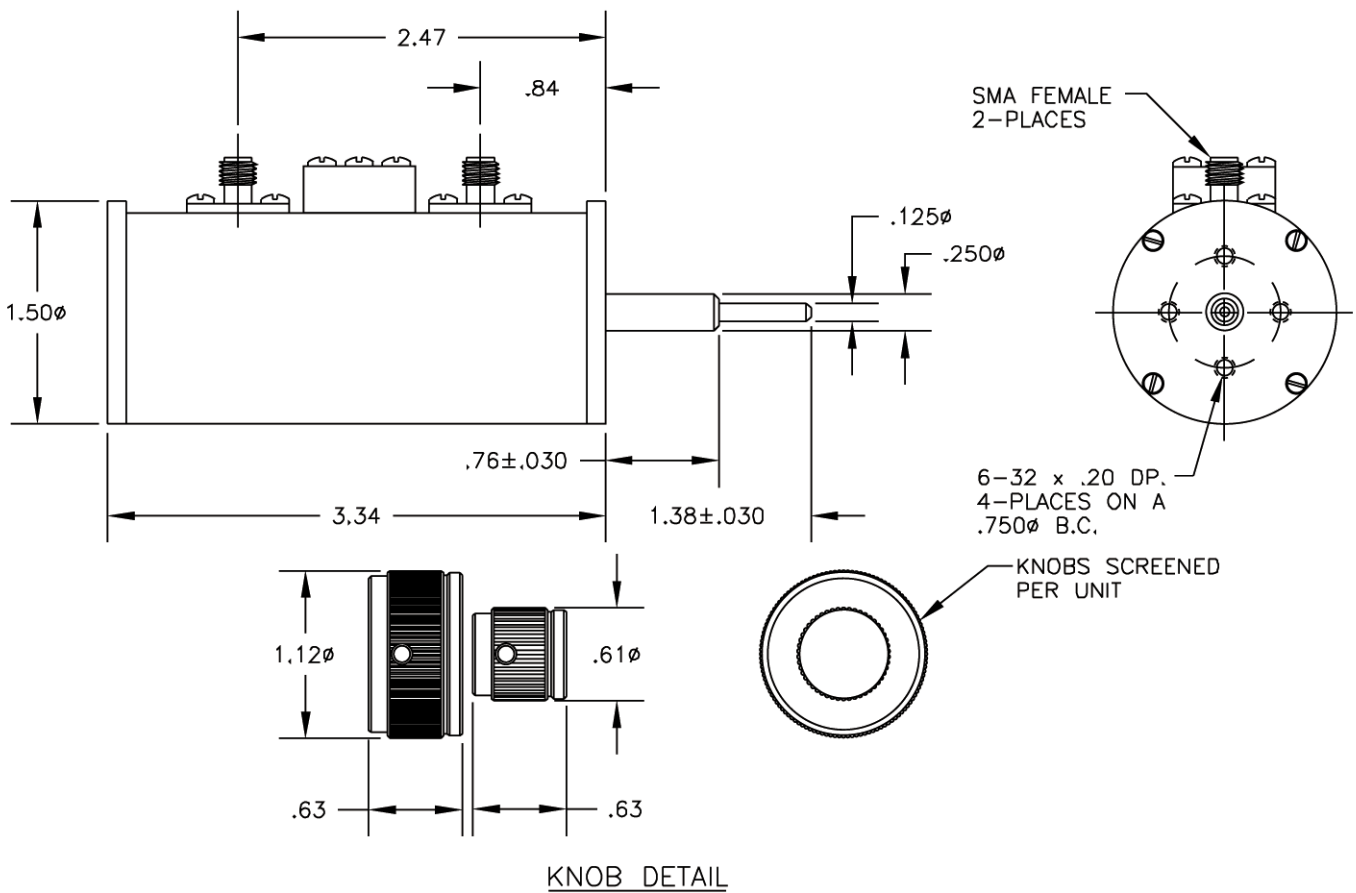


# Dual Concentric Rotary Attenuators

Model	Frequency Range	Attenuation Range	Attenuation Accuracy	VSWR	Insertion Loss
50DR-055	DC-2000 MHz	0-30 dB in 1 dB steps	+/- .25 dB maximum or 2% DC-1000 MHz +/- .4 dB maximum or 3% 1000-2000 MHz	1.3:1 maximum DC-1000 MHz 1.5:1 maximum 1000-2000 MHz	.8 dB maximum
50DR-060	DC-2000 MHz	0-11 dB in .1 dB steps	+/- .05 dB maximum .1dB steps DC-1100 MHz +/- .06 dB maximum .1dB steps 1100-2000 MHz +/- .2 dB maximum 1dB steps DC-1100 MHz +/- .4 dB maximum 1dB steps 1100-2000 MHz	1.3:1 maximum DC-1100 MHz 1.5:1 maximum 1100-2000 MHz	1 dB maximum DC-1100 MHz 1.25 dB maximum 1100-2000 MHz
50DR-063	DC-1100 MHz	0-50 dB in 1 dB steps	+/- .2 dB maximum DC-250 MHz +/- .5 dB maximum 250-500 MHz +/- 1 dB maximum 500-1100 MHz	1.1:1 maximum DC-250 MHz 1.2:1 maximum 250-500 MHz 1.4:1 maximum 500-1100 MHz	.5 dB maximum

## Common Specifications

Impedance	RF Input Power	Operating Temperature	Standard Rotation	Indexing	RF Connector
50 Ohms	2 Watts average 1000 Watts peak	-20° C to +85° C	Attenuation increases in clockwise direction	30 degrees with stops at minimum and maximum	BNC, N, SMA or TNC female



This catalog represents only 10% of our products. For YOUR application, please contact JFW at 1-877-887-4JFW