

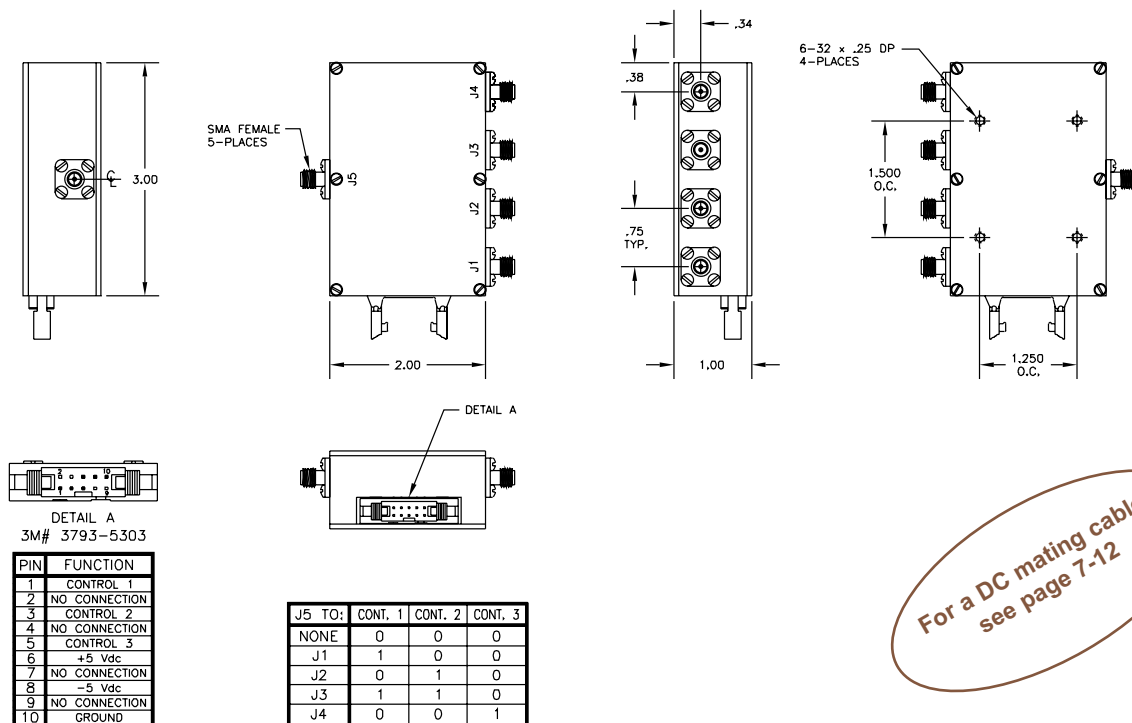
Cellular Band Solid State Coaxial Switches

All models are Absorptive

Model	Configuration	Frequency Range	Isolation Minimum	VSWR Maximum	Insertion Loss Maximum	Control Connector	RF Connectors
50S-963	1P4T	800-2200 MHz	50 dB	1.4:1 800-1000 MHz 1.5:1 1000-2200 MHz	2.5 dB 800-1000 MHz 3.5 dB 1000-2200 MHz	3M# 3793-5303	SMA female
50S-1173	1P4T	800-3000 MHz	50 dB	1.4:1	3 dB 800-1000 MHz 4 dB 1000-3000 MHz	3M# 3793-5303	SMA female
50S-964	1P8T	800-2200 MHz	50 dB	1.4:1 800-1000 MHz 1.5:1 1000-2200 MHz	3 dB 800-1000 MHz 4 dB 1000-2200 MHz	3M# 3793-5303	SMA female
50S-1090	1P8T	800-3000 MHz	60 db 800-1000 MHz 55 dB 1000-2000 MHz 50 dB 2000-3000 MHz	1.5:1	3 dB 800-2000 MHz 4 dB 2000-3000 MHz	3M# 3793-5303	SMA female
50S-960	1P12T	800-2200 MHz	50 dB	1.5:1	3 dB 800-1500 MHz 4.5 dB 1500-2200 MHz	3M# 3793-5303	SMA female
50S-1312	1P12T	800-2500 MHz	50 dB	1.5:1	3 dB 800-1500 MHz 4.5 dB 1500-2500 MHz	3M# 3793-5303	SMA female

Model	Impedance	Switching Speed	RF Input Power	Supply Voltage	Control Logic	Operating Temperature
50S-963	50 Ohms	10 microseconds	+20 dBm	+5 Vdc @ 200 mA -5 Vdc @ 200 mA	(3 lines) TTL, off ports are internally terminated into 50 Ohms	0° C to +70° C
50S-1173	50 Ohms	10 microseconds	+10 dBm	+5 Vdc @ 200 mA -5 Vdc @ 200 mA	(3 lines) TTL, off ports are internally terminated into 50 Ohms	0° C to +70° C
50S-964	50 Ohms	10 microseconds	+20 dBm	+5 Vdc @ 400 mA -5 Vdc @ 400 mA	(4 lines) TTL, off ports are internally terminated into 50 Ohms	0° C to +70° C
50S-1090	50 Ohms	10 microseconds	+20 dBm	+5 Vdc @ 200 mA -5 Vdc @ 400 mA	(4 lines) TTL, off ports are internally terminated into 50 Ohms	0° C to +70° C
50S-960	50 Ohms	10 microseconds	+20 dBm	+5 Vdc @ 200 mA -5 Vdc @ 500 mA	(4 lines) TTL, off ports are internally terminated into 50 Ohms	0° C to +70° C
50S-1312	50 Ohms	10 microseconds	+20 dBm	+5 Vdc @ 200 mA -5 Vdc @ 500 mA	(4 lines) TTL, off ports are internally terminated into 50 Ohms	0° C to +70° C

50S-963 / 50S-1173

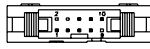
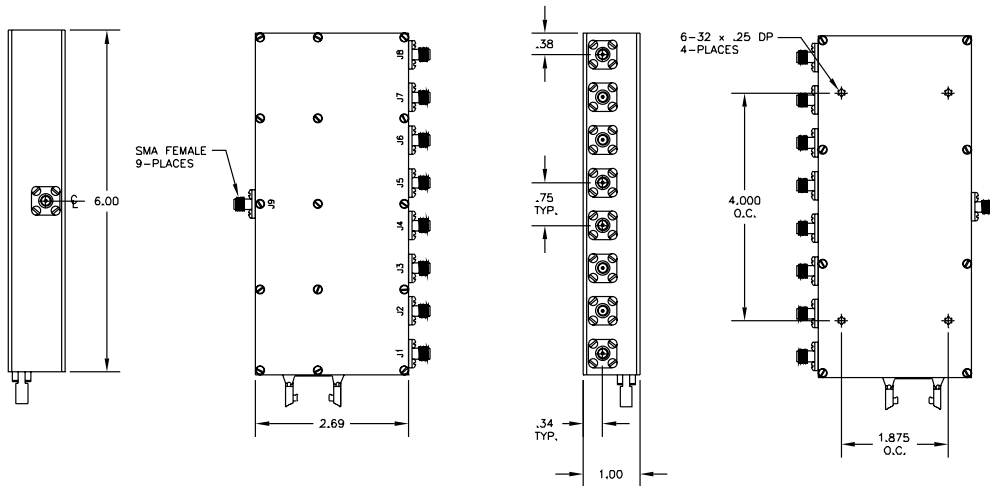


For a DC mating cable, see page 7-12

This catalog represents only 10% of our products. For YOUR application, please contact JFW at 1-877-887-4JFW

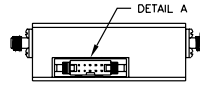
Cellular Band Solid State Coaxial Switches

50S-964 / 50S-1090



DETAIL A
3M# 3793-5303

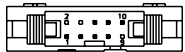
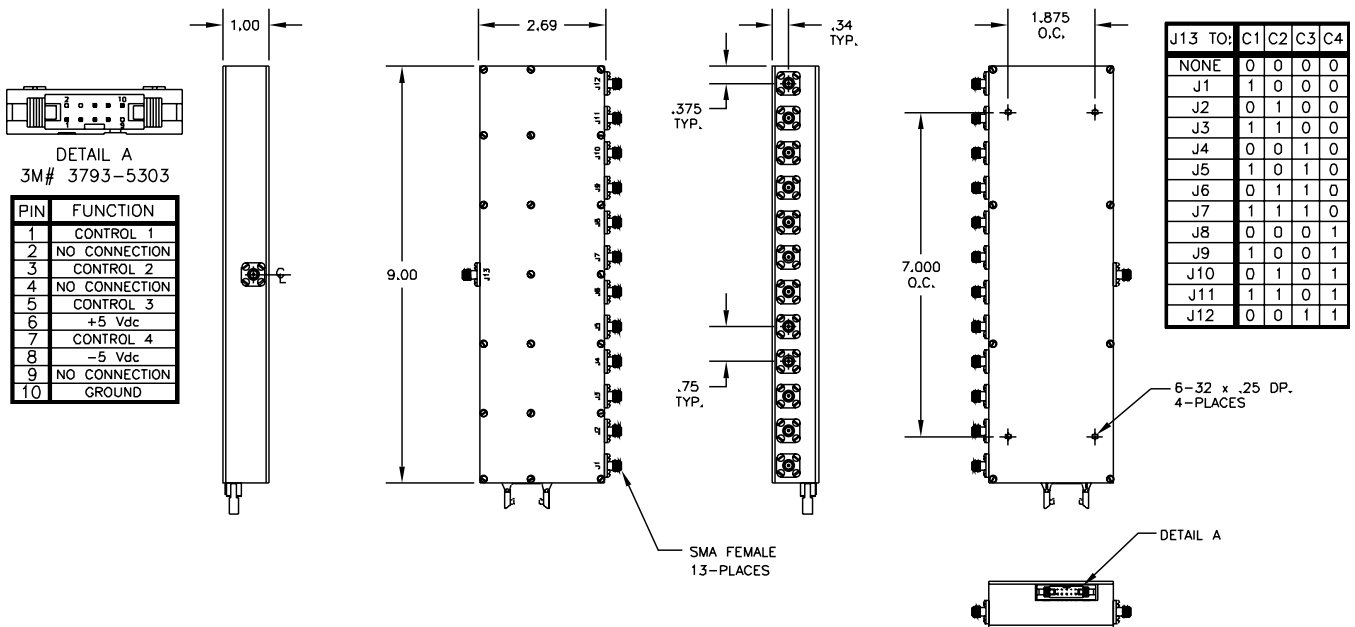
PIN	FUNCTION
1	CONTROL 1
2	NO CONNECTION
3	CONTROL 2
4	NO CONNECTION
5	CONTROL 3
6	+5 Vdc
7	CONTROL 4
8	-5 Vdc
9	NO CONNECTION
10	GROUND



J9 TO:	CONT. 1	CONT. 2	CONT. 3	CONT. 4
NONE	0	0	0	0
J1	1	0	0	0
J2	0	1	0	0
J3	1	1	0	0
J4	0	0	1	0
J5	1	0	1	0
J6	0	1	1	0
J7	1	1	1	0
J8	0	0	0	1

For a DC mating cable,
see page 7-12

50S-960 / 50S-1312



DETAIL A
3M# 3793-5303

PIN	FUNCTION
1	CONTROL 1
2	NO CONNECTION
3	CONTROL 2
4	NO CONNECTION
5	CONTROL 3
6	+5 Vdc
7	CONTROL 4
8	-5 Vdc
9	NO CONNECTION
10	GROUND

J13 TO:	C1	C2	C3	C4
NONE	0	0	0	0
J1	1	0	0	0
J2	0	1	0	0
J3	1	1	0	0
J4	0	0	1	0
J5	1	0	1	0
J6	0	1	1	0
J7	1	1	1	0
J8	0	0	0	1
J9	1	0	0	1
J10	0	1	0	1
J11	1	1	0	1
J12	0	0	1	1

This catalog represents only 10% of our products. For YOUR application, please contact JFW at 1-877-887-4JFW