

**KINTRONIC LABORATORIES INC.  
RF PATCH PANEL SERIES  
FOR AM, FM, AND TV APPLICATIONS**



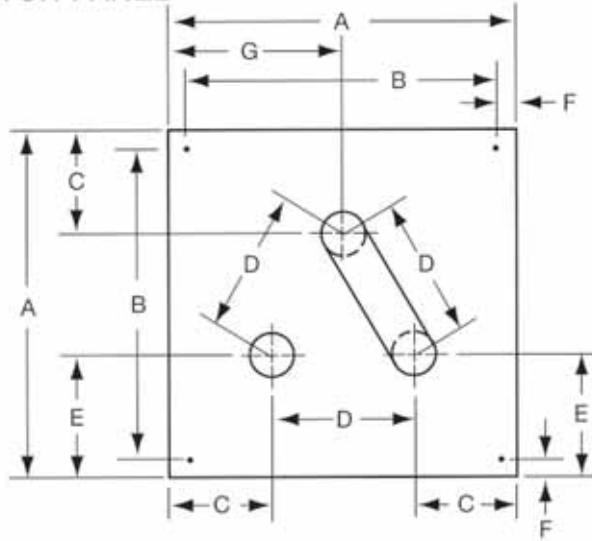
**FEATURES;**

- AVAILABLE IN 7/8" EIA, 1 5/8" EIA, 3 1/8" EIA OR 6 1/8" EIA
- INTERLOCK SWITCH FOR EACH U-LINK POSITION WIRED TO TERMINAL STRIP
- EXCLUSIVE TEFLON SUPPORTS FOR U-LINK ELBOW CENTER CONDUCTOR TO ASSURE PROPER U-LINK TO PORT ALIGNMENT
- IMPEDANCE: 50 OHMS

**KINTRONIC**  **LABS**

WEB SITE: <http://www.kintronic.com>

### 7/8" AND 1-5/8" 3 PORT PATCH PANEL



SIZE (INCHES)	DIM.	A	B	C	D	E	F	G
7/8"	Inches	12.000	10.000	3.3125	5.375	4.0375	.750	6.00
	cm	35.560	31.750	13.653	13.653	10.255	1.905	15.240
1-5/8"	Inches	14.000	12.500	4.125	5.750	4.875	.750	7.00
	cm	35.560	31.750	10.477	14.605	12.382	1.905	17.780

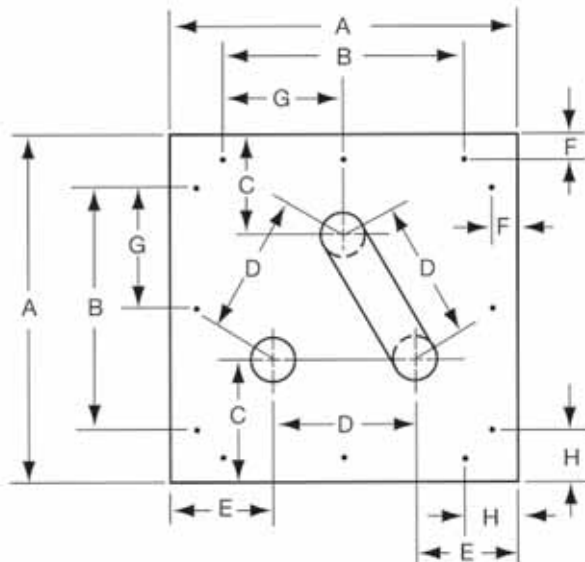
STOCK NO.

DESCRIPTION

PP-78-3U Three Ports, One U-Link, Two Interlock Microswitches, for 7/8" Line.

PP-158-3U Three Ports, One U-Link, Two Interlock Microswitches, for 1 5/8" Line.

### 3 -1/8" 3 PORT PATCH PANEL



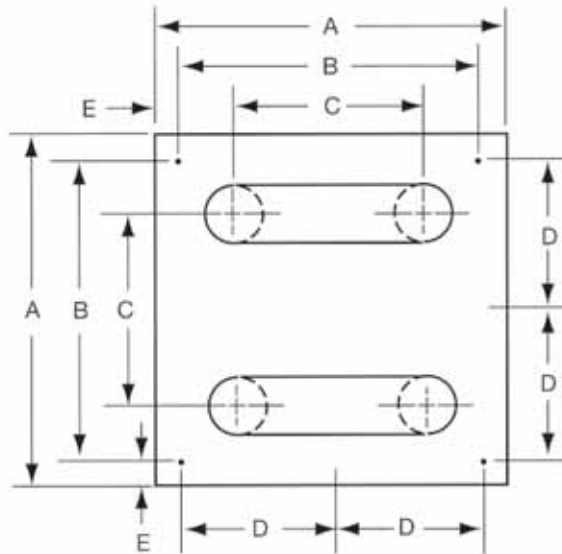
SIZE (INCHES)	DIM.	A	B	C	D	E	F	G	H
3-1/8"	Inches	18.000	14.000	5.500	8.000	5.000	.750	2.000	2.000
	cm	45.720	35.560	13.970	13.653	10.255	1.905	15.240	5.080

STOCK NO.

DESCRIPTION

PP-318-3U Three Ports, One U-Link, Two Interlock Microswitches, for 3 1/8" Line.

### 7/8" AND 1-5/8" 4 PORT PATCH PANEL



SIZE (INCHES)	DIM.	A	B	C	D	E
7/8"	Inches	14.000	12.500	5.375	6.250	.750
	cm	35.560	31.750	13.653	15.875	1.905
1-5/8"	Inches	16.000	15.000	5.750	5.7500	.500
	cm	40.640	38.100	14.765	19.050	1.270

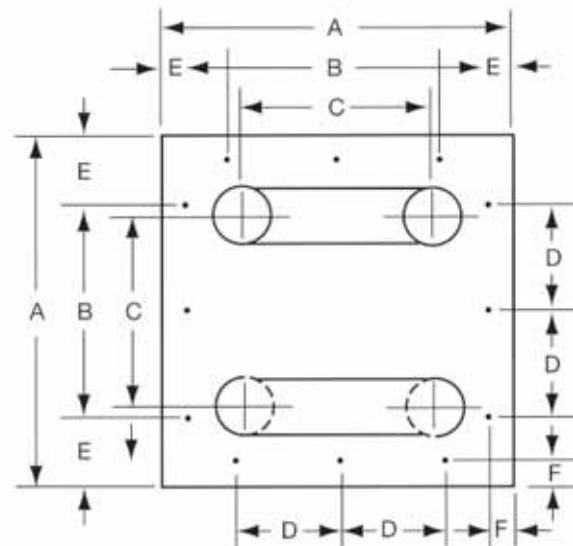
STOCK NO.

DESCRIPTION

PP-78-4U Four Ports, Two U-Link, Four Interlock Microswitches, for 7/8" Line.

PP-158-4U Four Ports, Two U-Link, Four Interlock Microswitches, for 1 5/8" Line.

### 3-1/8" 4 PORT PATCH PANEL



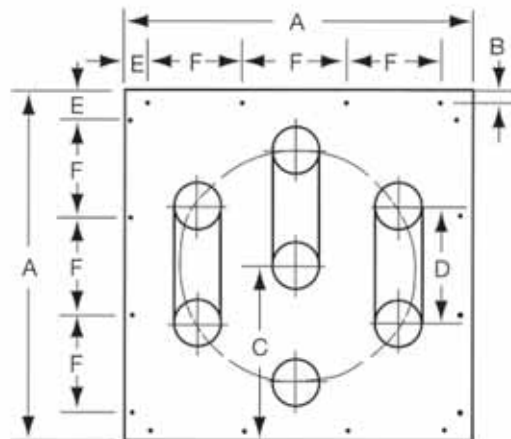
SIZE (INCHES)	DIM.	A	B	C	D	E	F
3-1/8"	Inches	20.000	15.875	8.000	7.938	2.000	.750
	cm	50.800	40.322	20.320	20.163	5.080	1.905

STOCK NO.

DESCRIPTION

PP-318-4U Four Ports, Two U-Link, Four Interlock Microswitches, for 3 1/8" Line.

## 7/8" AND 1-5/8" 7 PORT PATCH PANEL



SIZE (INCHES)	DIM.	A	B	C	D	E	F
7/8"	Inches	17.375	0.750	8.6875	5.375	1.500	4.790
	cm	44.132	1.905	22.066	13.653	3.810	12.167
1-5/8"	Inches	19.875	0.750	9.875	5.750	1.500	5.625
	cm	50.482	1.905	25.082	14.605	3.810	14.287

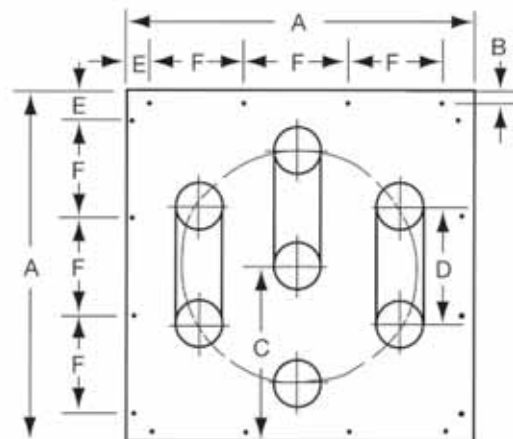
STOCK NO.

DESCRIPTION

PP-78-7U Seven Ports, Three U-Link, Seven Interlock Microswitches, for 7/8" Line.

PP-158-7U Seven Ports, Three U-Link, Seven Interlock Microswitches, for 1 5/8" Line.

## 3-1/8" 7 PORT PATCH PANEL



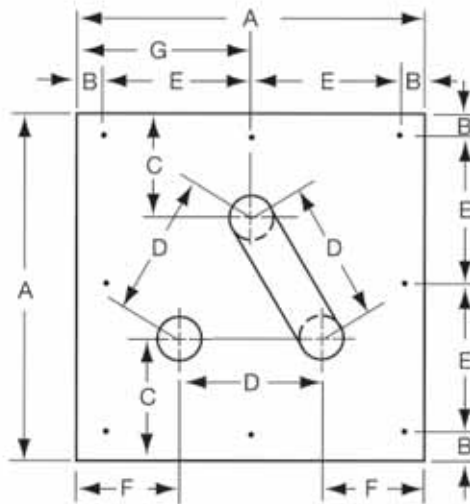
SIZE (INCHES)	DIM.	A	B	C	D	E	F
3-1/8"	Inches	25.000	0.750	12.000	8.000	2.000	7.000
	cm	68.500	1.905	30.480	20.320	5.080	17.780

STOCK NO.

DESCRIPTION

PP-318-7U Seven Ports, Three U-Link, Seven Interlock Microswitches, for 3 1/8" Line.

### 6-1/8" 3 PORT PATCH PANEL



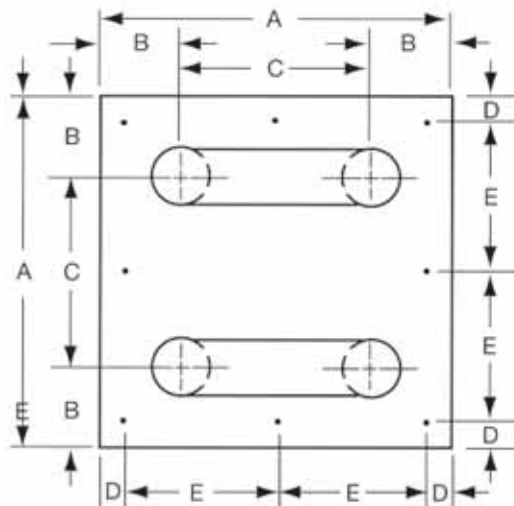
SIZE (INCHES)	DIM.	A	B	C	D	E	F	G
6-1/8"	Inches	36.000	1.000	13.250	11.000	17.000	12.500	18.000
	cm	91.440	2.540	33.655	27.940	43.180	31.750	45.720

STOCK NO.

DESCRIPTION

PP-618-3U Three Ports, Three U-Link, Two Interlock Microswitches, for 6 1/8" Line.

### 6-1/8" 4 PORT PATCH PANEL



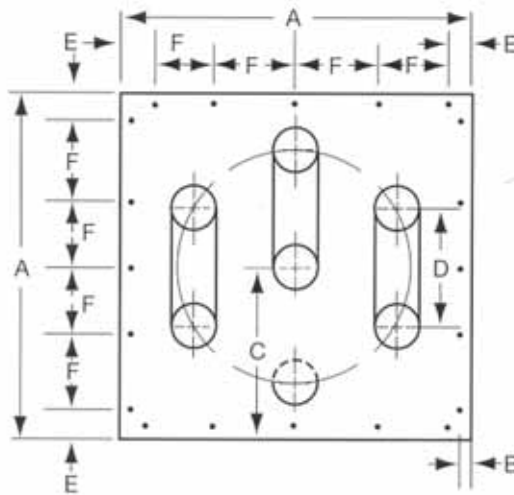
SIZE (INCHES)	DIM.	A	B	C	D	E
6-1/8"	Inches	24.000	6.500	11.000	1.000	11.000
	cm	60.960	16.510	27.940	2.540	27.940

STOCK NO.

DESCRIPTION

PP-618-4U Four Ports, Two U-Link, Four Interlock Microswitches, for 6 1/8" Line.

## 6-1/8" 7 PORT PATCH PANEL



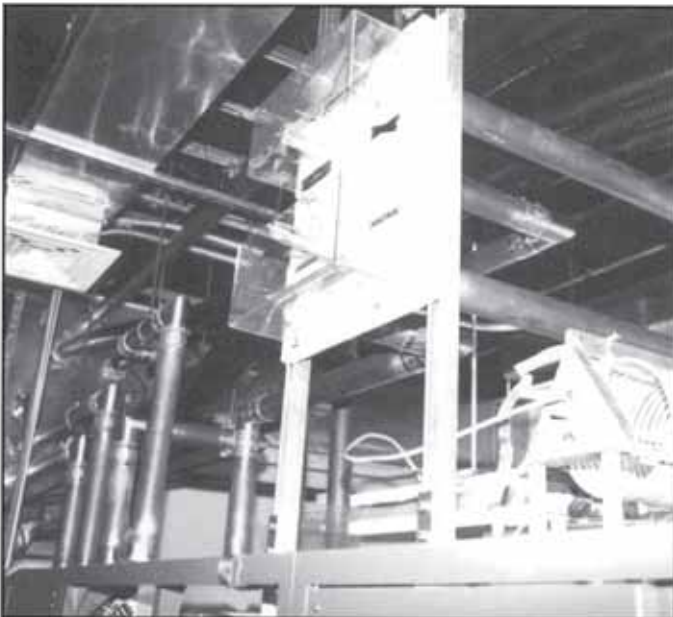
SIZE (INCHES)	DIM.	A	B	C	D	E	F
6-1/8"	Inches	36.000	0.750	18.000	11.000	2.000	8.000
	cm	91.440	1.905	45.720	27.940	5.08	20.320

STOCK NO.

DESCRIPTION

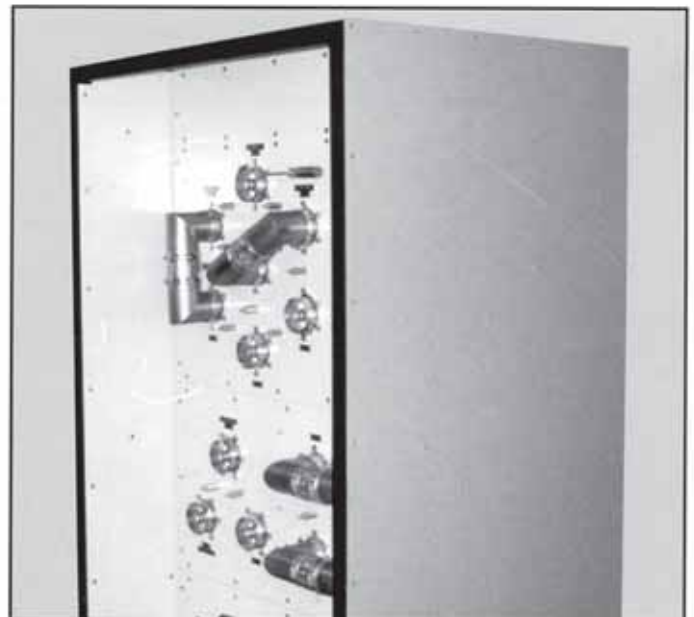
PP-618-7U Seven Ports, Three U-Link, Seven Interlock Microswitches, for 6 1/8" Line.

## OPTIONAL ACCESSORIES AND SWITCHING SYSTEMS



**RIGID TRANSMISSION LINES AND ACCESSORIES**

TO COMPLETE THE PATCH PANEL INSTALLATION, KINTRONIC LABORATORIES OFFERS A **COMPLETE LINE OF RIGID TRANSMISSION LINES AND ACCESSORIES FOR RF INTERCONNECTIONS BETWEEN PATCH PANELS AND TRANSMITTERS, ANTENNAS AND DUMMY LOADS.**



**CUSTOM MATRIX SWITCHING CABINETS**

IN ADDITION KINTRONIC LABORATORIES OFFERS CUSTOM MANUAL **SWITCH MATRIX CABINETS FOR FM OR TV TRANSMITTING SITES TO PERMIT OPERATION OF MAIN OR STANDBY TRANSMITTERS TO ONE OR MORE ANTENNAS OR DUMMY LOADS.**

KinTronic Laboratories, Inc.

WEB SITE: <http://www.kintronic.com>