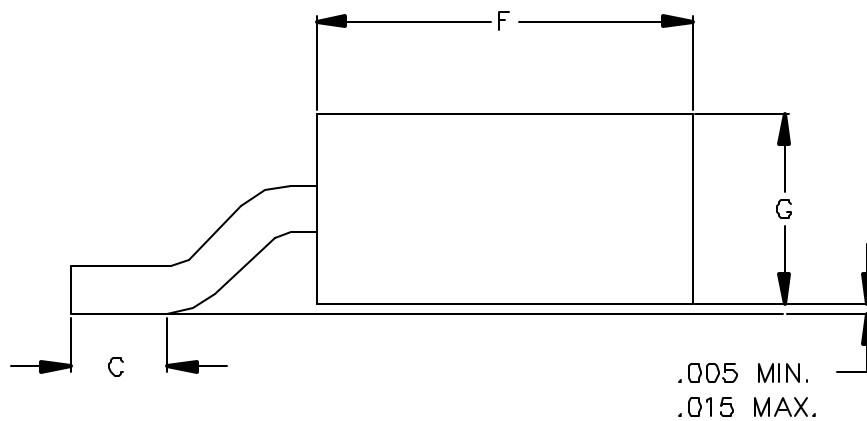
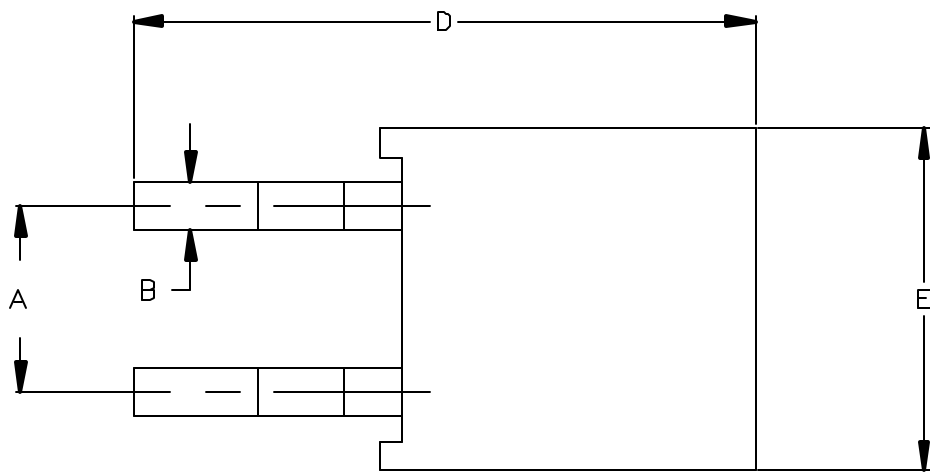


REV.	C/N	DESCRIPTION	APPROVAL
A	2066	ISSUE NEW DWG.	
B	2079	ADDED NOTE B AND REVISED DWG	
C		ADDED P600L-125-7.5/10/15	



NOTES:

1. ALL DIMENSIONS ARE IN INCHES.
2. LEADS TO BE COATED WITH SN60/PB40 SOLDER.
3. PRIOR TO SK-406 LEAD FORMING, ALL FUSES SHALL BE SCREENED PER THE GROUP A SCREENING REQUIREMENTS OF THE P600L SPECIFICATION.
4. GROUP B SCREENING TO BE CONDUCTED ON FUSES AFTER LEAD FORMING TO SK-406 REQUIREMENTS.
5. PARTS TO BE MARKED PER THE P600L SPECIFICATION WITH P600L PART NUMBER.
6. FUSE PACKAGING TO BE LABELED WITH SK-406 DESIGNATION.
7. PART ORDERING INFORMATION:
EXAMPLE: P600L-72-7.5 ORDERED AS SK406-72-7.5.
8. GROUP B, SOLDERABILITY TESTING, TO BE CONDUCTED PRIOR TO TERMINAL STRENGTH AND OVERLOAD CURRENT TESTING.



DRAWING TITLE : SK406 LEAD OPTION
FOR P600L STYLE FUSES

TOLERANCES UNLESS OTHERWISE SPECIFIED :
.XX = N/A
.XXX = N/A
ANGLE = N/A °

DWG. NO
887108
REV.
C

DESIGNED : SHEET 1 OF 1
DRAWN : J M 6-28-97 SCALE NONE
CHECKED : M. VL 6-27-97 DRAWING SIZE A

P600L FIG.	A		B		C		D		E		F		G	
	MIN.	MAX.	MIN.	MAX.	MIN.	MAX.	MIN.	MAX.	MIN.	MAX.	MIN.	MAX.	MIN.	MAX.
FIGURE 1	.145	.175	.024	.028	.120	.135	.480	.540	.260	.280	.260	.275	.130	.145
FIGURE 2	.190	.210	.049	.054	.120	.135	.610	.685	.360	.380	.400	.410	.190	.210
FIGURE 3	.190	.210	.063	.067	.120	.135	.610	.685	.360	.380	.400	.410	.190	.210
P600L-125-7.5 P600L-125-10.0 P600L-125-15.0	.335	.365	.049	.054	.120	.135	.640	.710	.590	.610	.415	.435	.290	.310