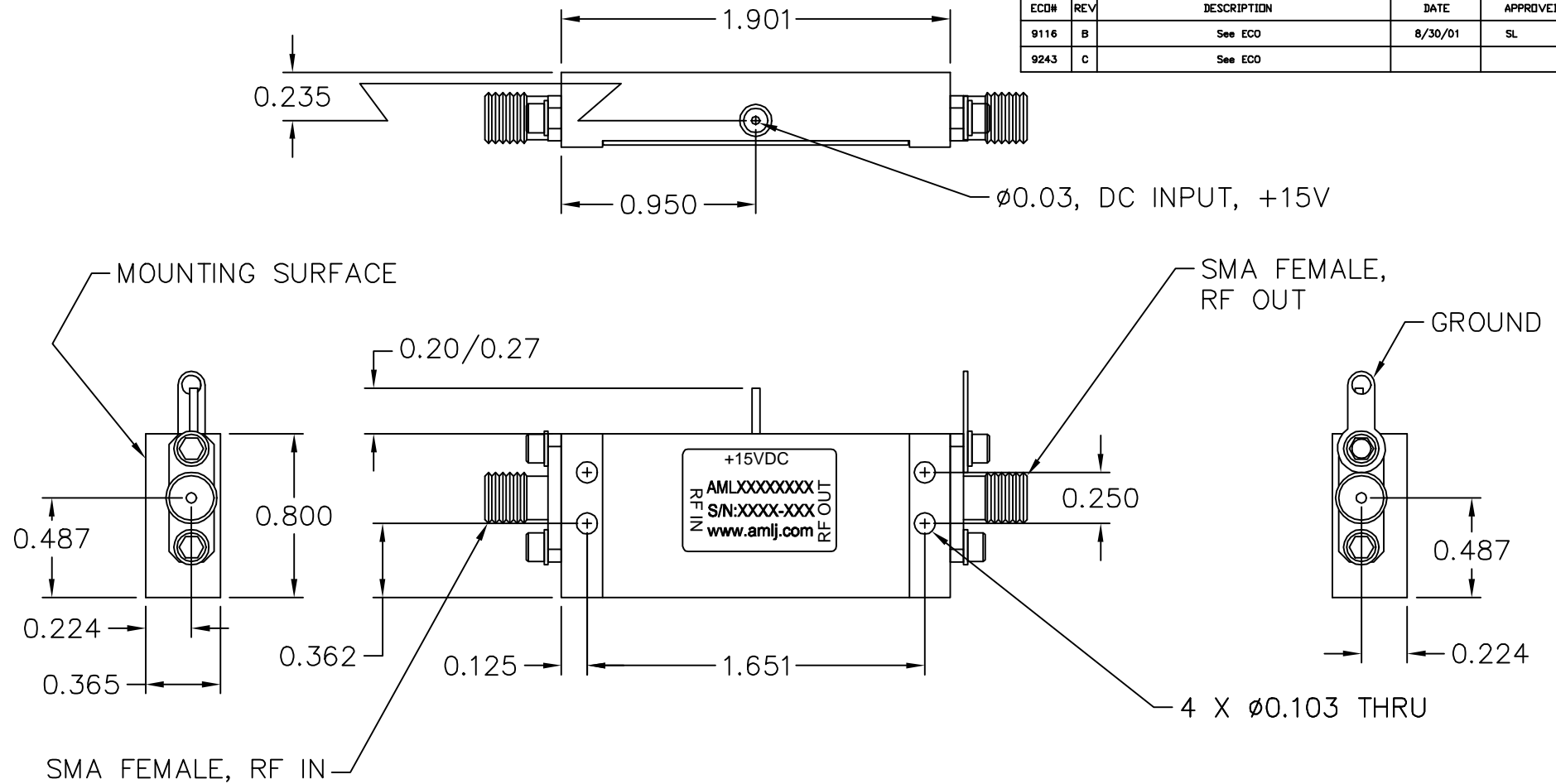


REVISIONS				
ECO#	REV	DESCRIPTION	DATE	APPROVED
9116	B	See ECO	8/30/01	SL
9243	C	See ECO		



NOTES:

1. MARK LABEL (003-0230) AS SHOWN. MARK SERIAL NUMBER, DATE CODE AND MODEL NUMBER AS PER TRAVELER.

UNLESS OTHERWISE SPECIFIED DIMENSIONS ARE IN INCHES TOLERANCES ARE: DECIMALS .XX ± .01 ANGLES ± 5°		THIRD ANGLE PROJECTION		DRAWN BY TA DESIGNED BY SH APPROVED ENGR MFG ENGR QA RELEASED BY:		CHECK BY SH DATE		TITLE: OUTLINE CATALOG (C4)		SCALE: 2X DATE: 5/24/01		 CAMARILLO, CALIFORNIA, USA BOM NUMBER	
MATERIAL ALUM ALLOY 6061				FINISH ELECTROLESS NI MIL-C-26074C 0.0003/0.0005 THICK				GENERAL FABRICATION NOTES: (UNLESS OTHERWISE NOTED) 1. REMOVE ALL BURRS AND BREAK SHARP EDGES. 2. DIMENSIONS APPLY AFTER FINISH. 3. ALL BENDS TO BE 90°. 4. 63 MAX. MACHINE FINISH.				SHEET NUMBER 1 OF 1 SIZE B	
DO NOT SCALE DRAWING				GENERAL ASSEMBLY NOTES: (UNLESS OTHERWISE NOTED) 1. ASSEMBLE AS PER WORKMANSHIP REQUIREMENTS OF IPC-A-610, CLASS 2				DRAWING NUMBER 002-0112 REV C					