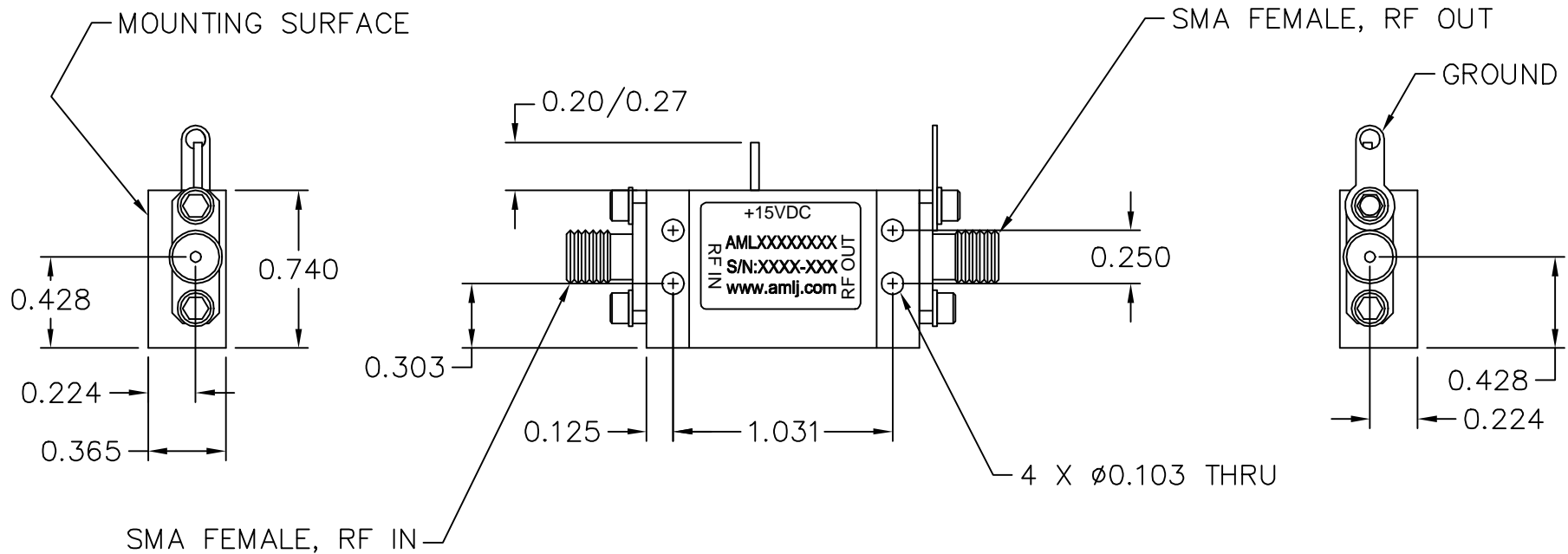
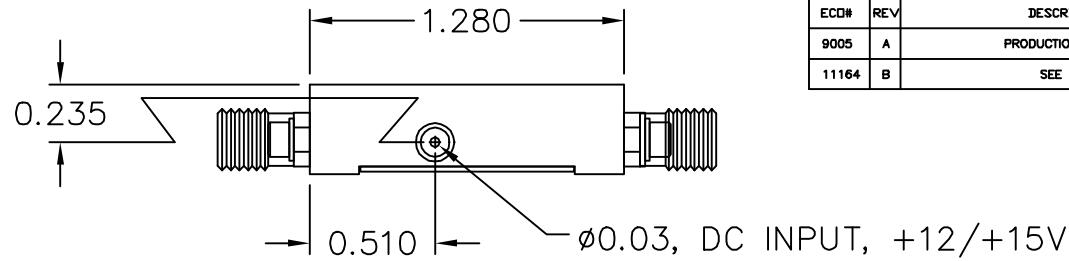



REVISIONS				
ECO#	REV	DESCRIPTION	DATE	APPROVED
9005	A	PRODUCTION RELEASE	5/25/01	M. CALAYAN
11164	B	SEE ECO	5/24/05	M. CALAYAN



NOTES:

1. MARK LABEL (003-0231) AS SHOWN. MARK SERIAL NUMBER, DATE CODE AND MODEL NUMBER AS PER TRAVELER.

UNLESS OTHERWISE SPECIFIED DIMENSIONS ARE IN INCHES TOLERANCES ARE: DECIMALS .XX ± 0.01 .XXX ± .005 ANGLES ± 5°		THIRD ANGLE PROJECTION		DRAWN BY TA CHECK BY SH DESIGNED BY SH APPROVED ENGR Tibby Mazilu 5/25/01 ENGR MFG ENGR Gary Rogers 5/25/01 QA Linda Herrera 5/25/01 RELEASED BY Mike Calayan 5/25/01		TITLE: OUTLINE, CATALOG, (K3) SCALE: 2X DATE: 5/24/01		 CAMARILLO, CALIFORNIA, USA BOM NUMBER SHEET NUMBER 1 OF 1 SIZE B DRAWING NUMBER 002-0099 REV B	
MATERIAL ALUM ALLOY 6061		FINISH ELECTROLESS Ni MIL-C-26074C 0.0003/0.0005 THICK		DO NOT SCALE DRAWING		GENERAL FABRICATION NOTES: (UNLESS OTHERWISE NOTED) 1. REMOVE ALL BURRS AND BREAK SHARP EDGES. 2. DIMENSIONS APPLY AFTER FINISH. 3. ALL BENDS TO BE 90°. 4. 63 MAX. MACHINE FINISH.		GENERAL ASSEMBLY NOTES: (UNLESS OTHERWISE NOTED) 1. ASSEMBLE AS PER WORKMANSHIP REQUIREMENTS OF IPC-A-610, CLASS 2	