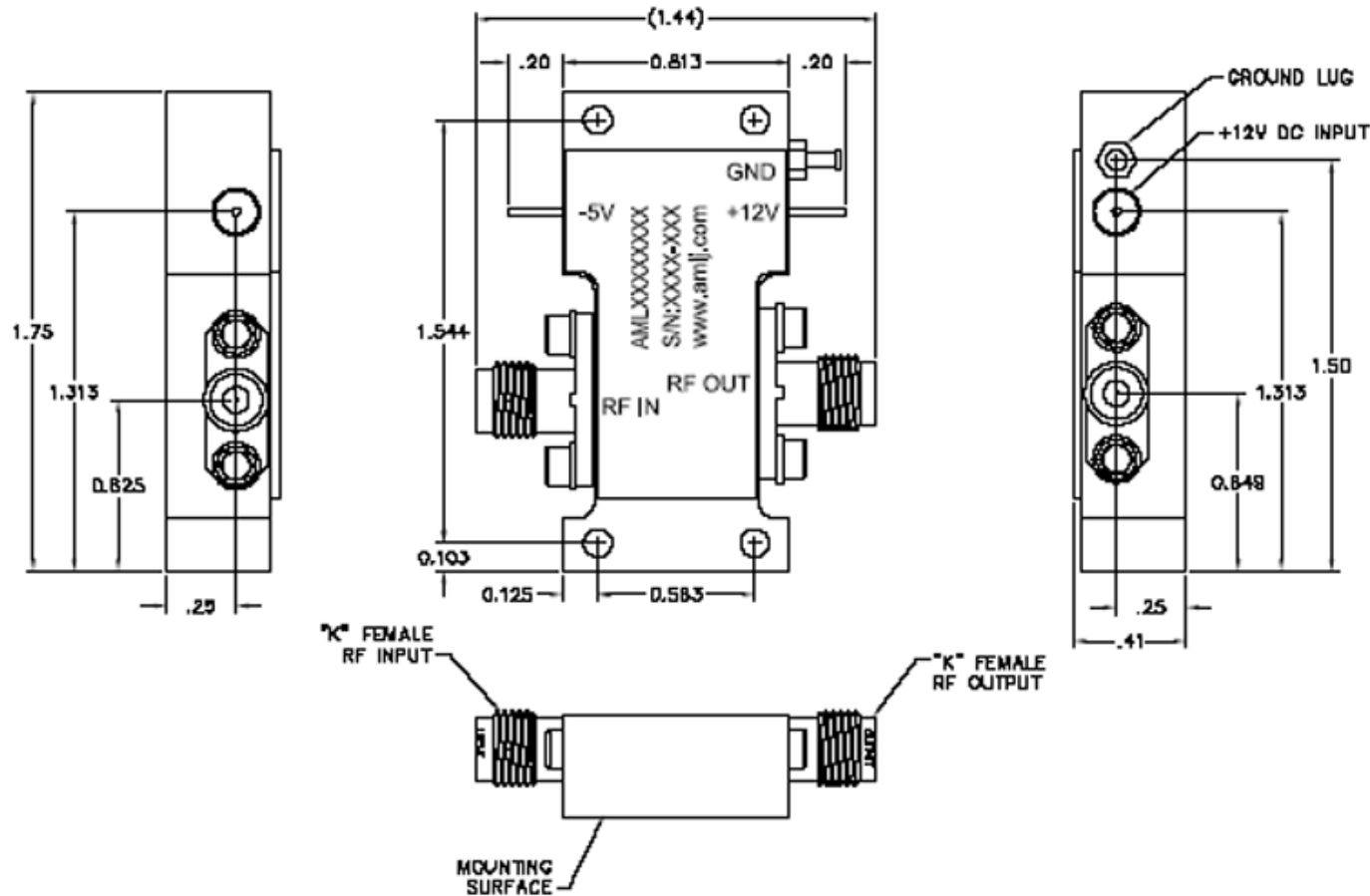


This Document is the property of AMI Communications, Inc. The information contained in this Document shall not be reproduced, copied, misused or made available to any third party without prior written authorization. Usage of information contained in this Document for maintenance or sale of products without prior written authorization is strictly prohibited.

REVISED				
REV	DESCRIPTION	DATE	APPROVED	
-	RELEASE	2/13/07	M. CHAYAN	



NOTES:

1. SILKSCREEN UNIT AS SHOWN. MARK SERIAL NUMBER, DATE CODE AND MODEL NUMBER AS PER TRAVELER.

UNLESS OTHERWISE SPECIFIED DIMENSIONS ARE IN INCHES TOLERANCES ARE: DIMENSIONS ANGLES FIN ± .010 ± .02° HOLE ± .010 HOLE IN CLOSURE	 THIRD ANGLE PROJECTION	DRAWN BY OM CHECK BY SH DESIGNED BY DP APPROVED DATE	TITLE OUTLINE, 8-40 GHz, AMPLIFIER CATALOG		 DANA POINT, CALIFORNIA, USA	
		MATERIAL ALUM ALLOY 8081-T8	FINISH NICKEL PLATE PER MIL-C-26074 300-500 uIN THK	DATE DATE DATE DATE RELEASED BY		SCALE NTS DATE 2/8/07
DO NOT SCALE DRAWING			GENERAL FABRICATION NOTES (UNLESS OTHERWISE SPECIFIED) 1. TIGHTEN ALL BOLTS AND NUTS TO HAND TOOLS TO SPECIFIED TORQUE. 2. DIMENSIONS APPLY AFTER FINISH. 3. USE 30° VEE MACHINE FINISH. 4. INTERPRET DRAWING PER ANSI/ASME Y14.5M-1994		DRAWING NUMBER 002-0537	REV -