

P Series

The Chameleon
Adaptable Module for
General Purpose, DC Applications



UL Recognized*
CSA Certified*
VDE Approved*

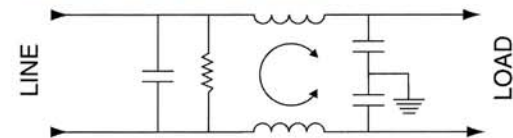
* Approvals pending

P Series

The DC version of the "P Series" power entry module offers full flexibility of design in the most compact package. It is a general purpose filter specifically designed for DC applications up to 80VDC. This module comes in snap-in or flange mount versions for easy mounting. It also allows for a single or dual fuse option.

The DC version of the "P Series" was designed to address the increasing demand for filtering on central office equipment and customer premises equipment, but not restricted to this type of equipment. Some examples include routers, desktop servers and switches multiplexors, aggregators, concentrators, etc.

Electrical Schematic



Specifications

Hipot rating (one minute):	
line-to-ground	2250 VDC
line-to-line	1450 VDC
Fuseholder:	
Accepts one or two fuses*	1/4" x 1-1/4" or 5 x 20 mm
Rated voltage (max):	80 VDC
Terminals:	0.187" x 0.032" terminal tabs

*Conversion clip provided on fuseholder for single fuse models.

Minimum insertion loss in dB:

Line-to-ground in 50 ohm circuit

Current Rating	Frequency-MHz								
	.03	.1	.15	.5	1	3	5	10	30
3A	7	17	21	27	33	40	44	50	32
6A		8	12	17	23	32	36	44	30
10A			3	5	10	13	23	27	35

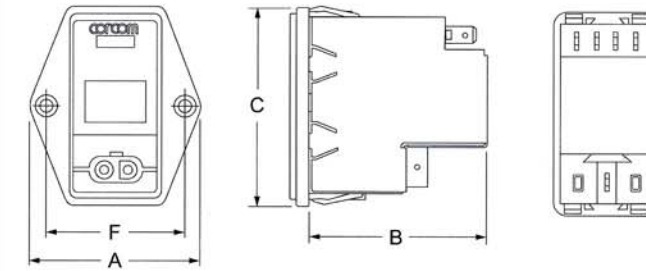
Line-to-line in 50 ohm circuit

Current Rating	Frequency-MHz								
	.10	.15	.5	1	3	5	10	30	
3A	2	4	12	15	30	48	50	45	
6A	2	4	12	15	22	42	55	45	
10A	2	4	12	15	22	42	55	45	

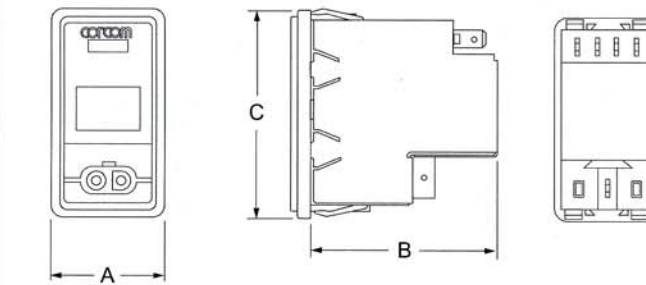
Case Styles

Metric shown in italics.

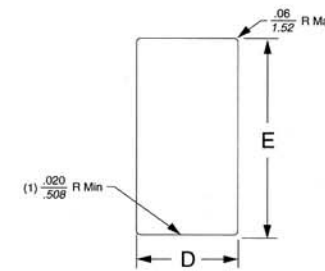
PE



PS



Recommended Panel Cutout



Case Dimensions – Filtered Models

Metric shown in italics.

Part No.	A (max)	B (max)	C (max)	D +0.008/-0.000 +20/-00	E +0.008/-0.000 +20/-00	F
PE	1.98 50.3	2.13 54.1	2.31 58.7	1.120 28.45	2.201 55.91	1.575 40.0
PS	1.24 31.5	2.13 54.1	2.31 58.7	1.060 26.93	2.201 55.91	-

Ordering Information

Consult your local Corcom sales representative for pricing.

P S 0 0 0 D D 3 D

- Shield Options**
D = Complete shield (DC version)
- Filter Current**
3 = 3 amps
6 = 6 amps
X = 10 amps
- Filter Type**
D = DC version
- Fuse Options**
D = Dual fuse
S = Single fuse
- Input Voltage Select**
0 = Single AC voltage
- Switch Options**
0 = No switch
- ExtenderOptions**
0 = None
- Mounting Style**
E = Mounting ears
S = Snap-in

Available Part Numbers *Contact factory for availability

PE000DD3D*	PS000DD3D*
PE000DD6D*	PS000DD6D*
PE000DDXD*	PS000DDXD*
PE000SD3D*	PS000SD3D*
PE000SD6D*	PS000SD6D*
PE000SDXD*	PS000SDXD*