



**CAPACITORS, FIXED, METALLISED  
POLYCARBONATE DIELECTRIC**

**BASED ON TYPE CKM 111**

**ESCC Detail Specification No. 3006/007**

Issue 2	September 2013
---------	----------------



**LEGAL DISCLAIMER AND COPYRIGHT**

European Space Agency, Copyright © 2013. All rights reserved.

The European Space Agency disclaims any liability or responsibility, to any person or entity, with respect to any loss or damage caused, or alleged to be caused, directly or indirectly by the use and application of this ESCC publication.

This publication, without the prior permission of the European Space Agency and provided that it is not used for a commercial purpose, may be:

- copied in whole, in any medium, without alteration or modification.
- copied in part, in any medium, provided that the ESCC document identification, comprising the ESCC symbol, document number and document issue, is removed.

**DOCUMENTATION CHANGE NOTICE**

(Refer to <https://escies.org> for ESCC DCR content)

DCR No.	CHANGE DESCRIPTION
799	Specification upissued to incorporate editorial changes per DCR.

**TABLE OF CONTENTS**

1	GENERAL	6
1.1	SCOPE	6
1.2	RANGE OF COMPONENTS	6
1.3	MAXIMUM RATINGS	6
1.4	PARAMETER DERATING INFORMATION	6
1.5	PHYSICAL DIMENSIONS	6
1.6	FUNCTIONAL DIAGRAM	6
2	APPLICABLE DOCUMENTS	9
3	TERMS, DEFINITIONS, ABBREVIATIONS. SYMBOLS AND UNITS	9
4	REQUIREMENTS	9
4.1	GENERAL	9
4.2	DEVIATIONS FROM GENERIC SPECIFICATION	9
4.2.1	Deviations from Special In-process Controls	9
4.2.2	Deviations from Final Production Tests (Chart II)	9
4.2.3	Deviations from Burn-in and Electrical Measurements (Chart III)	9
4.2.4	Deviations from Qualification Tests (Chart IV)	9
4.2.5	Deviations from Lot Acceptance Tests (Chart V)	9
4.3	MECHANICAL REQUIREMENTS	9
4.3.1	Dimension Check	9
4.3.2	Weight	10
4.3.3	Robustness of Terminations	10
4.4	MATERIALS AND FINISHES	10
4.4.1	Case	10
4.4.2	Leads	10
4.5	MARKING	10
4.5.1	General	10
4.5.2	The ESCC Component Number	10
4.5.3	Electrical Characteristics and Ratings	11
4.5.3.1	NUMERICAL VALUES	11
4.5.3.2	TOLERANCES	11
4.5.3.3	RATED VOLTAGE	12
4.5.4	Traceability Information	12
4.6	ELECTRICAL MEASUREMENTS	12
4.6.1	Electrical Measurements at Room Temperature	12
4.6.2	Electrical Measurements at High and Low Temperatures	12



4.6.3	Circuits for Electrical Measurements	12
4.7	BURN-IN TESTS	12
4.7.1	Parameter Drift Values	12
4.7.2	Conditions for Burn-in	12
4.8	ENVIRONMENTAL AND ENDURANCE TESTS	15
4.8.1	Electrical Measurements on Completion of Environmental Tests	15
4.8.2	Electrical Measurements at Intermediate Points during Endurance Tests	15
4.8.3	Electrical Measurements on Completion of Endurance Tests	15
4.8.4	Conditions for Operating Life Tests (Part of Endurance Testing)	15

## 1 GENERAL

### 1.1 SCOPE

This specification details the ratings, physical and electrical characteristics, test and inspection data for Capacitors, Fixed, Metallised, Polycarbonate Dielectric, based on Type CKM 111.

It shall be read in conjunction with ESCC Generic Specification No. 3006, the requirements of which are supplemented herein.

### 1.2 RANGE OF COMPONENTS

The range of capacitors covered by this specification is scheduled in Table 1(a).

### 1.3 MAXIMUM RATINGS

The maximum ratings, which shall not be exceeded at any time during use or storage, applicable to the capacitors specified herein, are scheduled in Table 1(b).

### 1.4 PARAMETER DERATING INFORMATION

The rated voltage versus temperature derating is shown in Figure 1.

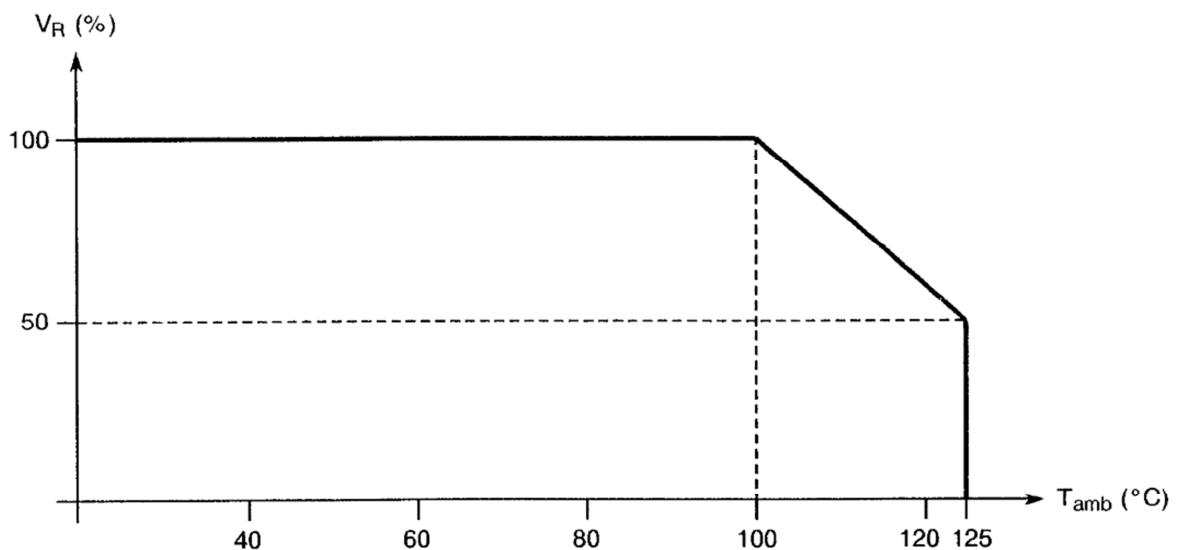
### 1.5 PHYSICAL DIMENSIONS

The physical dimensions of the capacitors specified herein are shown in Figure 2.

### 1.6 FUNCTIONAL DIAGRAM

The functional diagram for the capacitors specified herein is shown in Figure 3.

**FIGURE 1 - PARAMETER DERATING INFORMATION**



**TABLE 1(a) - RANGE OF COMPONENTS**

Item No.	Capacitance Range (1) (µF)		Rated Voltage		Dimensions (mm)			Mean Weight (g)	
			(Vdc)	(Vrms)	L Max.	D	Ø (+10 -5) %		
01	0.0261	to	0.0536	63	40	19	6.4	0.6	1.5
02	0.0549	to	0.115	63	40	19	8.4	0.6	2.5
03	0.118	to	0.255	63	40	23.5	8.4	0.8	3.0
04	0.261	to	0.536	63	40	23.5	11	0.8	4.5
05	0.549	to	1.15	63	40	23.5	13.2	0.8	5.2
06	1.18	to	2.55	63	40	36	13.2	1.0	7.3
07	2.61	to	3.74	63	40	36	14.8	1.0	8.2
08	3.83	to	5.36	63	40	36	17	1.0	9.0
09	0.0118	to	0.0255	160	100	19	6.4	0.6	1.5
10	0.0261	to	0.0536	160	100	19	8.4	0.6	2.5
11	0.0549	to	0.115	160	100	23.5	8.4	0.8	3.0
12	0.118	to	0.255	160	100	23.5	11	0.8	4.5
13	0.261	to	0.536	160	100	23.5	13.2	0.8	5.2
14	0.549	to	1.15	160	100	36	13.2	1.0	7.3
15	0.00374	to	0.00825	250	160	16	6.4	0.6	1.5
16	0.00845	to	0.0115	250	160	19	6.4	0.6	1.5
17	0.0118	to	0.0255	250	160	19	8.4	0.6	2.5
18	0.0261	to	0.0536	250	160	23.5	8.4	0.8	3.0
19	0.0549	to	0.115	250	160	23.5	11	0.8	4.5
20	0.118	to	0.221	250	160	23.5	13.2	0.8	5.2
21	0.226	to	0.511	250	160	36	13.2	1.0	7.3
22	0.001	to	0.00365	400	200	16	6.4	0.6	1.5
23	0.00374	to	0.00536	400	200	19	6.4	0.6	1.5
24	0.00549	to	0.0115	400	200	19	8.4	0.6	2.5
25	0.0118	to	0.0255	400	200	23.5	8.4	0.8	3.0
26	0.0261	to	0.0536	400	200	23.5	11	0.8	4.5
27	0.0549	to	0.115	400	200	23.5	13.2	0.8	5.2
28	0.118	to	0.255	400	200	36	13.2	1.0	7.3

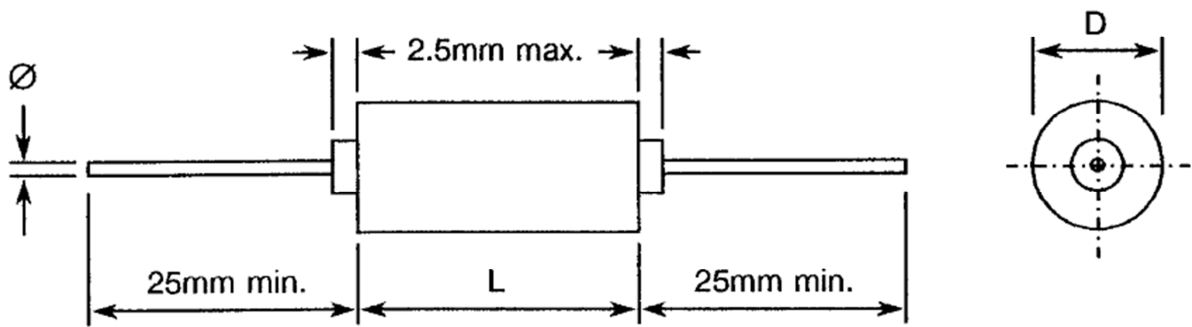
**NOTES**

- The capacitance tolerances and associated standard value series are:  
E96 = ±1.0%.  
E48 = ±2.0%.

**TABLE 1(b) - MAXIMUM RATINGS**

No.	Characteristics	Symbol	Maximum Ratings		Unit	Remarks
			Min.	Max.		
1	Rated Voltage DC	$U_R$	See Table 1(a)		Vdc	
2	Rated Voltage AC	$U_A$	See Table 1(a)		Vrms	All frequencies to 50Hz
3	Operating Temperature Range	$T_{op}$	-55	+125	°C	$T_{amb}$
4	Storage Temperature Range	$T_{stg}$	-55	+125	°C	$T_{amb}$
5	Maximum Soldering Temperature	$T_L$	-	+260	°C	Soldering time: $t_s \leq 5$ seconds at 6mm from the body

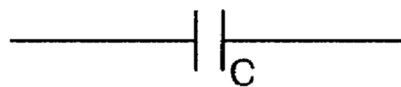
**FIGURE 2 - PHYSICAL DIMENSIONS**



**NOTES**

1. See Table 1(a) for dimensions.

**FIGURE 3 - FUNCTIONAL DIAGRAM**





## 2 APPLICABLE DOCUMENTS

The following documents form part of this specification and shall be read in conjunction with it:

- (a) ESCC Generic Specification No. 3006 for Capacitors, Fixed, Metallised Plastic Dielectric, Hermetically Sealed in Metal Cases.
- (b) MIL-STD-1276, Leads, Weldable for Electronic Component Parts.

## 3 TERMS, DEFINITIONS, ABBREVIATIONS. SYMBOLS AND UNITS

For the purpose of this specification, the terms, definitions, abbreviations, symbols and units specified in ESCC Basic Specification No. 21300 shall apply.

## 4 REQUIREMENTS

### 4.1 GENERAL

The complete requirements for procurement of the capacitors specified herein are stated in this specification and ESCC Generic Specification No. 3006 for Capacitors, Fixed, Metallised Plastic Dielectric, Hermetically Sealed in Metal Cases. Deviations from the Generic Specification, applicable to this specification only, are listed in Para. 4.2.

Deviations from the applicable Generic Specification and this Detail Specification, formally agreed with specific Manufacturers on the basis that the alternative requirements are equivalent to the ESCC requirements and do not affect the components' reliability, are listed in the appendices attached to this specification.

### 4.2 DEVIATIONS FROM GENERIC SPECIFICATION

#### 4.2.1 Deviations from Special In-process Controls

None.

#### 4.2.2 Deviations from Final Production Tests (Chart II)

None.

#### 4.2.3 Deviations from Burn-in and Electrical Measurements (Chart III)

None.

#### 4.2.4 Deviations from Qualification Tests (Chart IV)

None.

#### 4.2.5 Deviations from Lot Acceptance Tests (Chart V)

None.

### 4.3 MECHANICAL REQUIREMENTS

#### 4.3.1 Dimension Check

The dimensions of the capacitors specified herein shall be checked. They shall conform to those shown in Figure 2 and Table 1(a) of this specification.

#### 4.3.2 Weight

The maximum weight of the capacitors specified herein shall be 1.2 times the mean weight specified in Table 1(a).

#### 4.3.3 Robustness of Terminations

The requirements for robustness of terminations are specified in Section 9 of ESCC Generic Specification No. 3006. The test conditions shall be as follows:

- (a) For lead diameters equal to, or less than, 0.8mm  
Applied Force: 10 Newtons.
- (b) For lead diameters exceeding 0.8mm  
Applied Force: 20 Newtons.

The force shall be applied gradually to the terminal and then maintained for a period of 5 to 10 seconds. After this test, the capacitors shall be examined for evidence of breaking and loosening of terminals.

#### 4.4 MATERIALS AND FINISHES

The materials and finishes shall be as specified herein. Where a definite material is not specified, a material which will enable the capacitors specified herein to meet the performance requirements of this specification shall be used. Acceptance or approval of any constituent material does not guarantee acceptance of the finished product.

##### 4.4.1 Case

The case material shall be non-magnetic metal, hermetically sealed and covered with an insulating sleeve.

##### 4.4.2 Leads

The capacitors shall be equipped with tinned copper leads according to Type 'C' of MIL-STD-1276. Therefore, these leads may be either electrically welded or soldered. The leads shall be free from non-conductive and foreign materials beyond the maximum specified "clean lead to clean lead" body dimension. At any cross-section, the maximum thickness of the sheath shall not exceed twice the minimum thickness of the sheath.

#### 4.5 MARKING

##### 4.5.1 General

The marking of components delivered to this specification shall be in accordance with the requirements of ESCC Basic Specification No. 21700 and the following paragraphs.

- (a) The ESCC Component Number.
- (b) Electrical Characteristics and Ratings.
- (c) Traceability Information.

##### 4.5.2 The ESCC Component Number

The ESCC Component Number shall be constituted and marked as follows: 3006007B, where 3006007 is the Detail Specification Number and B the Testing Level (either B or C, as applicable).

4.5.3 Electrical Characteristics and Ratings

The electrical characteristics and ratings to be marked in the following order of precedence are:

- (a) Numerical Value.
- (b) Tolerance.
- (c) Rated Voltage.

The information shall be constituted and marked as follows:

Example: 2212FD

- Numerical Value (0.0221 $\mu$ F): 2212
- Tolerance (1.0%): F
- Rated Voltage (63V): D

4.5.3.1 *Numerical Values*

Numerical values shall be coded as follows. The unit quantity for marking shall be picofarads.

Numerical Value	Code
XX.X	XXRX
XXX	XXX0
XXX10 <sup>1</sup>	XXX1
XXX10 <sup>2</sup>	XXX2
XXX10 <sup>3</sup>	XXX3
XXX10 <sup>4</sup>	XXX4
XXX10 <sup>5</sup>	XXX5
XXX10 <sup>6</sup>	XXX6
XXX10 <sup>7</sup>	XXX7

4.5.3.2 *Tolerances*

The tolerances on numerical values shall be indicated by the letter code specified hereafter.

Tolerance (%)	Code Letter
$\pm 1.0$	F
$\pm 2.0$	G

#### 4.5.3.3 *Rated Voltage*

The rated voltage shall be indicated by the code letters specified hereafter.

Rated Voltage (V)	Code Letter
63	D
160	F
250	H
400	K

#### 4.5.4 Traceability Information

Traceability information shall be marked in accordance with the requirements of ESCC Basic Specification No. 21700.

### 4.6 ELECTRICAL MEASUREMENTS

#### 4.6.1 Electrical Measurements at Room Temperature

The parameters to be measured at room temperature are scheduled in Table 2. The measurements shall be performed at  $T_{amb} = +22 \pm 3$  °C.

#### 4.6.2 Electrical Measurements at High and Low Temperatures

The parameters to be measured at high and low temperatures are scheduled in Table 3. The AQL shall be 2.5% for each capacitance value. Each capacitance value shall be considered as constituting a complete lot. For qualification or lot acceptance testing, the sample size shall be as specified in ESCC Generic Specification No. 3006.

#### 4.6.3 Circuits for Electrical Measurements

The circuit for use in performing the electrical measurements listed in Tables 2 and 3 of this specification is shown in Figure 4.

### 4.7 BURN-IN TESTS

#### 4.7.1 Parameter Drift Values

The parameter drift values applicable to burn-in are specified in Table 4 of this specification. Unless otherwise stated, measurements shall be performed at  $T_{amb} = +22 \pm 3$  °C. The parameter drift values ( $\Delta$ ) applicable to the parameters scheduled shall not be exceeded. In addition to these drift value requirements for a given parameter, the appropriate limit value specified in Table 2 shall not be exceeded.

#### 4.7.2 Conditions for Burn-in

The requirements for burn-in are specified in Section 7 of ESCC Generic Specification No. 3006. The conditions for burn-in shall be as specified in Table 5 of this specification. On completion of burn-in, a recovery period of  $24 \pm 2$  hours is necessary before the end-measurements.

**TABLE 2 - ELECTRICAL MEASUREMENTS AT ROOM TEMPERATURE**

No.	Characteristics	Symbol	ESCC 3006 Test Condition	Limits		Unit	Remarks
				Min.	Max.		
1	Voltage Proof (Between Terminals)	$U_T$	Para. 9.6.1.1	$1.6U_R$	-	v	See $U_R$ Table 1(a)
3	Insulation Resistance	$R_i$	Para. 9.6.1.4	50 (1)	-	GΩ	
5	Capacitance	C	Para. 9.6.1.2	$C_n$ -1 -2	$C_n$ +1 +2	pF % %	See Table 1(a)
6	Tangent of Loss Angle	$tg\delta$	Para. 9.6.1.3	-	20	$10^{-4}$	$C \leq 1.0\mu F$
				-	15	$10^{-4}$	$C > 1.0\mu F$

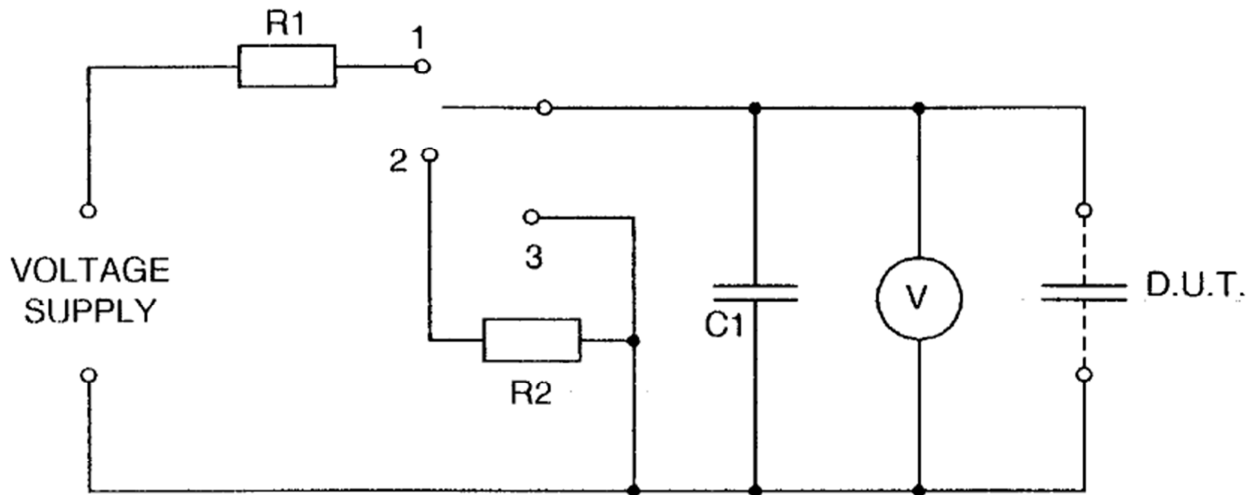
**TABLE 3 - ELECTRICAL MEASUREMENTS AT HIGH AND LOW TEMPERATURES**

No.	Characteristics	Symbol	ESCC 3006 Test Condition	Limits		Unit
				Min.	Max.	
1	Insulation Resistance at $+125 \pm 3 \text{ }^\circ\text{C}$ (Between Terminals)	$R_i$	Para. 9.6.1.4	500 (2)	-	MΩ
2	Capacitance Change at $-55 \pm 3 \text{ }^\circ\text{C}$	$\Delta C/C$	Para. 9.6.1.2	-3	-	%
3	Capacitance Change at $+125 \pm 3 \text{ }^\circ\text{C}$	$\Delta C/C$	Para. 9.6.1.2	-2	+1	%

**NOTES**

1.  $10 \text{ G}\Omega \cdot \mu\text{F}$  (or  $RC \geq 10000$  seconds) for  $C > 0.22\mu\text{F}$ .
2.  $100 \text{ M}\Omega \cdot \mu\text{F}$  (or  $RC \geq 100$  seconds) for  $C > 0.22\mu\text{F}$ .

**FIGURE 4 - CIRCUITS FOR ELECTRICAL MEASUREMENTS**



**NOTES**

1. The resistance of the Voltmeter shall be not less than  $10000\Omega/V$ . The capacitance of C shall be at least 10 times that of the DUT.
2. The resistances of R1 and R2 shall be such that the initial charging and discharging current does not exceed 0.05A at the highest test voltage.

**TABLE 4 - PARAMETER DRIFT VALUES**

No.	Characteristics	Symbol	Specification	Test Conditions	Change Limits ( $\Delta$ )	Unit
1	Capacitance	$\Delta C/C$	ESCC 3006	Para. 9.6.1.2	$\pm 0.5$	%

**TABLE 5 - CONDITIONS FOR BURN-IN**

No.	Characteristic	Symbol	Condition	Unit
1	Ambient Temperature	$T_{amb}$	+ 125	$^{\circ}C$
2	Test Voltage	$U_T$	$0.7U_R$	V

#### 4.8 ENVIRONMENTAL AND ENDURANCE TESTS

##### 4.8.1 Electrical Measurements on Completion of Environmental Tests

The parameters to be measured on completion of environmental tests are scheduled in Table 6. Unless otherwise stated, the measurements shall be performed at  $T_{amb} = +22 \pm 3 \text{ }^{\circ}\text{C}$ .

##### 4.8.2 Electrical Measurements at Intermediate Points during Endurance Tests

The parameters to be measured at intermediate points during endurance tests are scheduled in Table 6.

##### 4.8.3 Electrical Measurements on Completion of Endurance Tests

The parameters to be measured on completion of endurance testing are scheduled in Table 6. Unless otherwise stated, the measurements shall be performed at  $T_{amb} = +22 \pm 3 \text{ }^{\circ}\text{C}$ .

##### 4.8.4 Conditions for Operating Life Tests (Part of Endurance Testing)

The requirements for operating life testing are specified in Section 9 of ESCC Generic Specification No. 3006. The conditions for operating life testing shall be as specified in Table 5 of this specification.

**TABLE 6 - ELECTRICAL MEASUREMENTS ON COMPLETION OF ENVIRONMENTAL TESTS AND AT INTERMEDIATE POINTS AND ON COMPLETION OF ENDURANCE TESTING**

ESCC 3006 Paragraph	Characteristic	Symbol	Measurement	Condition ESCC 3006 Paragraph	Limits		Unit
					Min.	Max.	
9.8	Damp Heat Steady State (Duration: 56 Days)	$U_T$	Voltage Proof	9.6.1.1	$1.0 U_R$	-	V
		$\Delta C/C$	Capacitance Change	9.6.1.2	-0.5	+0.5	%
		$tg\delta$	Tangent of Loss Angle	9.6.1.3	See Table 2		
		$R_i$	Insulation Resistance	9.6.1.4	50% of Table 2	-	GΩ
9.9	Robustness of Terminations			External Visual Inspection			
9.10	Resistance to Soldering Heat	$\Delta C/C$	Capacitance Change	9.6.1.2	-0.25	+0.25	%
9.11	Solderability		External Visual Inspection	Solder Globule Method			
9.3	Rapid Change in Temperature	$\Delta C/C$	Capacitance Change	9.6.1.2	-0.5	+0.5	%
		$tg\delta$	Tangent of Loss Angle	9.6.1.3	See Table 2		
9.12	Vibration			External Visual Inspection			
9.13.1	Bump	$\Delta C/C$	Capacitance Change	9.6.1.2	-0.5	+0.5	%
9.13.2	Shock	$\Delta C/C$	Capacitance Change	9.6.1.2	-0.5	+0.5	%
9.14	Climatic Sequence	$\Delta C/C$	Capacitance Change	9.6.1.2	-0.5	+0.5	%
		$tg\delta$	Tangent of Loss Angle	9.6.1.3	See Table 2		
		$R_i$	Insulation Resistance	9.6.1.4	50% of Table 2	-	GΩ
9.16	Operating Life	$\Delta C/C$	Capacitance Change	9.6.1.2	-2	+2	%
		$tg\delta$	Tangent of Loss Angle	9.6.1.3	See Table 2		
		$R_i$	Insulation Resistance (between terminals)	9.6.1.4	40 (1)	-	GΩ

**NOTES**

- $R_i \geq 8 \text{ G}\Omega \cdot \mu\text{F}$  (or  $RC \geq 8000$  seconds) for  $C > 0.22 \mu\text{F}$ .