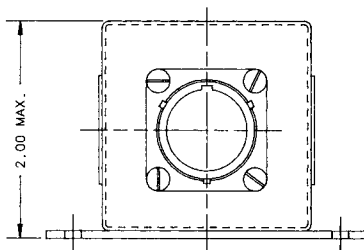
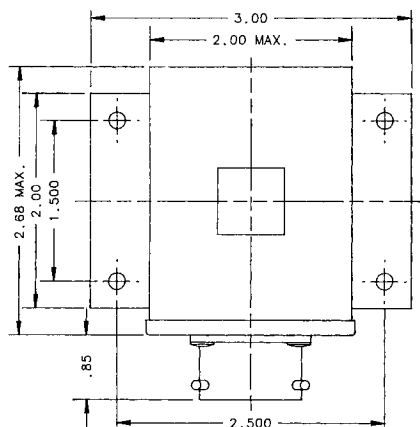
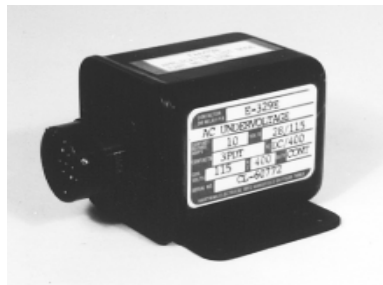


E-329E 3PDT, 10 Amps, 115 VAC

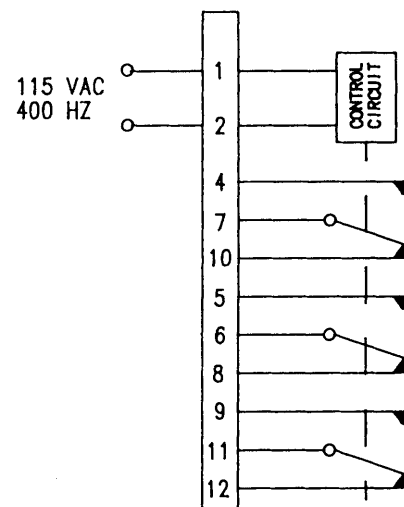


Dimensions for this product are expressed in inches.
Multiply values by 25.4 for millimeters.

Features:

- 3PDT Main Contacts
- Drop-Out Time Delay
- 115 VAC
- 10 Amps
- High Reliability
- Meets many requirements of MIL-R-6106
- Light Weight Construction

CONTACTOR CONFIGURATION



Notes:

PRODUCT SPECIFICATIONS

Electrical:	
Contact Form	3PDT
Contact Rating (Amps/Pole at 155 VAC & 28 VDC)	Resistive Inductive Motor Lamp 10 8 4 2
Contact Life	100,000 Operating, Minimum at Rated Resistive Load
Contact Bounce	3 Milliseconds Maximum
Duty Cycle	Continuous
Nominal Operating Voltage	115 VAC, RMS L-N
Maximum Operating Voltage	122 VAC, RMS L-N
Operating Frequency	400 ±20 Hz
Pick-Up Voltage	109 ±2 VRMS
Pick-Up Time	70 Milliseconds Maximum
Drop-Out Voltage	104 ±2 VRMS
Drop-Out Time Delay	200-400 milliseconds when the relay is in the energized position and the voltage drops below 104 ±2 VRMS and above 88 ±4 VRMS. The relay will remain energized for 200-400 milliseconds before de-energizing. When the voltage drops below 88 ±4 VRMS, no time delay is required. When the voltage drops to 30 volts or less, the relay will de-energize in 50 milliseconds max.
Input Voltage Transients	Per MIL-STD-704A
Operating Current	100 Milliamps Maximum at 25°C
Dielectric Withstanding Voltage	1000 VRMS, 60 Hz
Insulation Resistance	1000 MegOhms Minimum at 500 VDC
Environmental:	
Ambient Temperature	-55°C to +85°C (Operating) -55°C to +125°C (Non-Operating)
Shock	30 G'S, 11 Milliseconds, 1/2 SINE, 3 Axes
Acceleration	20 G'S in Any Axis
Altitude	0 to 80,000 Feet
Mechanical:	
Weight Maximum	10 Oz.
Construction	Aluminum Metal Can, Mounting Flanges and Cover, Solder Sealed Cover, Hermetic Sealed Contacts
Seal	

For factory-direct application assistance, contact the HARTMAN product team at (419) 521-9500, Fax (419) 526-2749.

© 2004 by Tyco Electronics Corporation. All Rights Reserved.
HARTMAN and TYCO are trademarks.