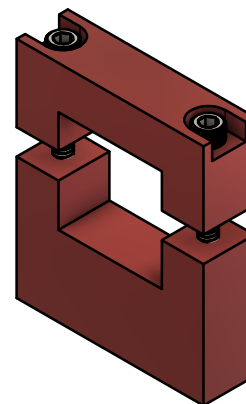
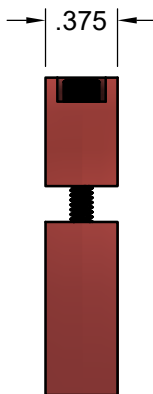
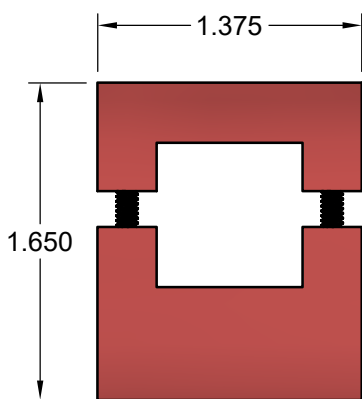
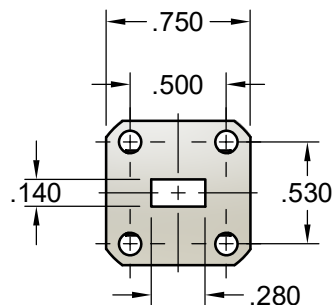
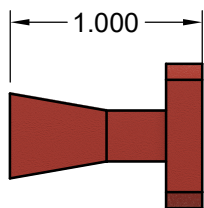
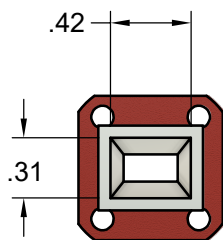
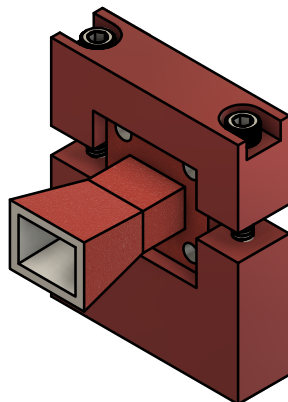


REVISION HISTORY

REV	DESCRIPTION	DATE	APPROVED
A	INITIAL RELEASE	7/28/2022	DA



1/4-20 UNC - 2B  
 ∇0.250

WR28 10dB GAIN HORN ANTENNA							
WG SIZE	FREQ. (GHz)	GAIN (dB)	3dB Beam Width (E-Plane)	3dB Beam Width (H-Plane)	Dim. A (in)	Dim. B (in)	Dim. C (in)
WR28	26.5-40	10	54.2°	54.4°	0.42	0.31	1.00

THIRD ANGLE PROJECTION:	UNLESS OTHERWISE NOTED, DIMENSIONS ARE IN INCHES, TOLERANCES ARE:  FRACTIONS: ±1/64 ANGLES: ±1/2° MACHINED FINISH: 63 OR BETTER	APPROVALS DRAWN: Dirk Aubram CHCKD: APRVD:	DATE 7/28/22				
	DECIMALS 2 PLACE: ±.03    3 PLACE: ±.005	MATERIAL: ALUMINUM TREATMENT: CHEMFILM FINISH: RED	SIZE: 6CDA9 SCALE: 1:1				
			CAGE CODE: 6CDA9 MODEL#: SGH28-10-ITI	DRAWING#: OTL28-10-ITI	REVISION A		
					DRAWING#: OTL28-10-ITI	SHEET 1/1	