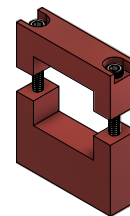
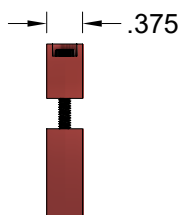
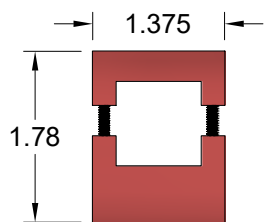
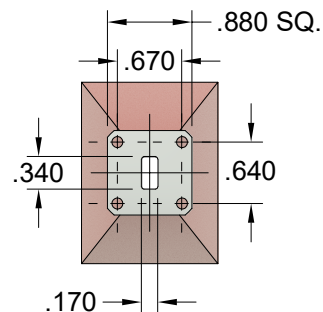
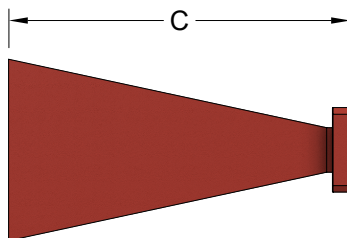
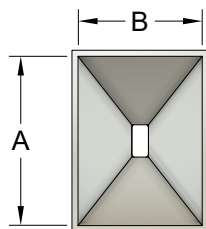
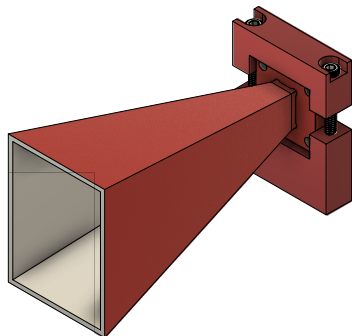


REVISION HISTORY

REV	DESCRIPTION	DATE	APPROVED
A	INITIAL RELEASE	7/28/2022	DA



1/4-20 UNC - 2B
 ∇0.300

WR34 20dB GAIN HORN ANTENNA							
WG SIZE	FREQ. (GHz)	GAIN (dB)	3dB Beam Width (E-Plane)	3dB Beam Width (H-Plane)	Dim. A (in)	Dim. B (in)	Dim. C (in)
WR34	22.0-33.0	20	17.0°	17.4°	1.76	1.29	3.56

THIRD ANGLE PROJECTION:	UNLESS OTHERWISE NOTED, DIMENSIONS ARE IN INCHES, TOLERANCES ARE: FRACTIONS: ±1/64 ANGLES: ±1/2° MACHINED FINISH: 63 OR BETTER	APPROVALS	DATE		
		DRAWN Dirk Aubram	7/28/22		
		CHCKD.			
		APRVD.			
DECIMALS		MATERIAL	ALUMINUM	DRAWING WR34 20dB Horn	
2 PLACE	3 PLACE	TREATMENT	CHEMFILM		
±.03	±.005	FINISH	RED		
		SIZE	CAGE CODE	ITTI DRAWING#	REVISION
		SCALE	6CDA9	OTL34-20-ITI	A
			MODEL#	SGH34-20-ITI	SHEET
					1/1