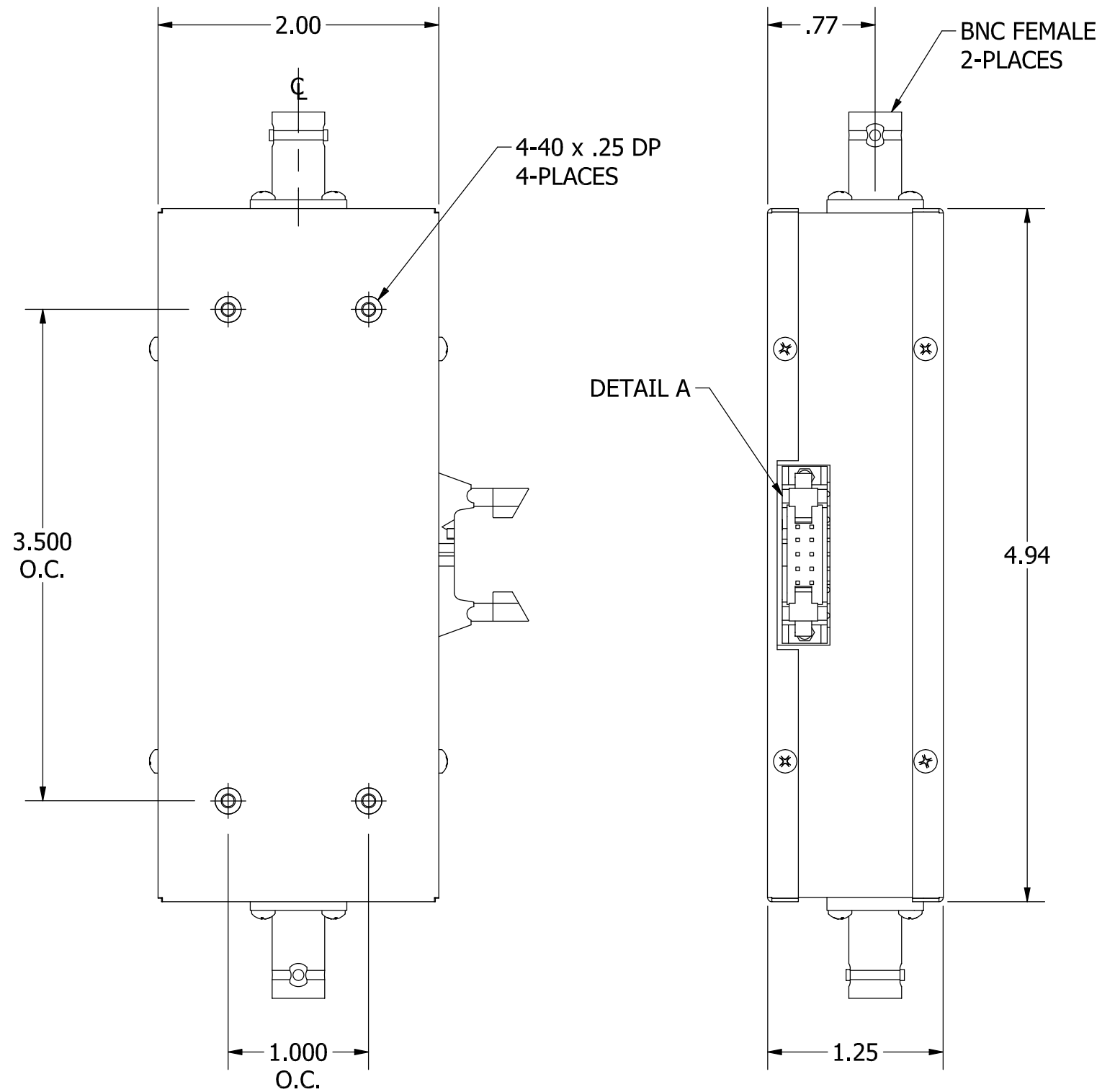


DETAIL A
3M# 3793-5303



PIN	75P-113	75P-135	75P-154	75P-155
1	NO CONNECTION	12.8 dB TTL CONT.	32 dB TTL CONT.	32 dB TTL CONT.
2	6.4 dB TTL CONT.	6.4 dB TTL CONT.	16 dB TTL CONT.	32 dB TTL CONT.
3	3.2 dB TTL CONT.	3.2 dB TTL CONT.	8 dB TTL CONT.	16 dB TTL CONT.
4	1.6 dB TTL CONT.	1.6 dB TTL CONT.	4 dB TTL CONT.	8 dB TTL CONT.
5	.8 dB TTL CONT.	.8 dB TTL CONT.	2 dB TTL CONT.	4 dB TTL CONT.
6	.4 dB TTL CONT.	.4 dB TTL CONT.	1 dB TTL CONT.	2 dB TTL CONT.
7	.2 dB TTL CONT.	.2 dB TTL CONT.	.5 dB TTL CONT.	1 dB TTL CONT.
8	.1 dB TTL CONT.	.1 dB TTL CONT.	.25 dB TTL CONT.	.5 dB TTL CONT.
9	+XX Vdc	+XX Vdc	+XX Vdc	+XX Vdc
10	GROUND	GROUND	GROUND	GROUND

REV	ECN	DATE	BY	APPR
-	ISSUED	8-22-94	PT	FDW
A	4878	1-30-96	CDJ	FDW
B	5879	12-8-98	PT	FDW
C	7764	3-4-04	DTS	TRS
D	10287	12-17-04	LT	TEZ
E	24444	9-25-15	JZ	TEZ



JFW INDUSTRIES, INC.

www.jfwindustries.com

PH: 317-887-1340

MATERIAL	BRASS	PROPRIETARY INFORMATION
FINISH	NICKEL	ALL SURFACES ARE TO BE FREE OF BURRS, PITS & SCRATCHES
MODEL	75P-XXX	TOLERANCES .XX±.010 .XXX±.005 XX°±.5°
DESCRIPTION	PROGRAMMABLE ATTENUATOR	DWG #
		092-2213