

Power Dividers/Combiners

Resistive

Reactive

High Power



Power Dividers/Combiners

Model Number Index

Please add connector type to the end of part number to complete model number ie; 50PD-234 SMA.

Resistive

	Frequency Range	Configuration	Page
<u>50 Ohm</u>			
50PD-001	DC-1000 MHz	2-Way	6-3
50PD-015	DC-2550 MHz	2-Way	6-3
50PD-016	DC-4000 MHz	2-Way	6-4
50PD-017	DC-2000 MHz	3-Way	6-4
50PD-018	DC-2000 MHz	4-Way	6-4
50PD-028	DC-1500 MHz	5-Way	6-4
50PD-133	DC-2000 MHz	2-Way	6-5
50PD-134	DC-2000 MHz	3-Way	6-5
50PD-135	DC-2000 MHz	4-Way	6-5
50PD-136	DC-2000 MHz	5-Way	6-5
50PD-292	DC-4000 MHz	3-Way	6-4
50PD-293	DC-4000 MHz	4-Way	6-4
50PD-379	DC-4000 MHz	2-Way	6-5
50PD-432	DC-6000 MHz	2-Way	6-5
<u>75 Ohm</u>			
75PD-001	DC-1000 MHz	2-Way	6-3
75PD-045	DC-2200 MHz	2-Way	6-5
75PD-046	DC-2000 MHz	3-Way	6-5
75PD-047	DC-2000 MHz	4-Way	6-5
75PD-048	DC-2000 MHz	5-Way	6-5

Reactive

	Frequency Range	Configuration	Page
<u>50 Ohm</u>			
50PD-223	800-2200 MHz	2-Way	6-6
50PD-224	800-2200 MHz	3-Way	6-6
50PD-232	800-2200 MHz	2-Way	6-8
50PD-233	800-2200 MHz	4-Way	6-8
50PD-234	800-2200 MHz	8-Way	6-8
50PD-243	800-2200 MHz	2-Way	6-12
50PD-244	800-2200 MHz	4-Way	6-12
50PD-254	800-3000 MHz	2-Way	6-8
50PD-255	800-3000 MHz	4-Way	6-8
50PD-282	800-3000 MHz	8-Way	6-8
50PD-445	400-3000 MHz	2-Way	6-6
50PD-454	800-2200 MHz	4-Way	6-6
50PD-455	800-2200 MHz	6-Way	6-6
50PD-456	800-2200 MHz	8-Way	6-6
50PD-495	800-2200 MHz	2-Way	6-8
50PD-496	800-2200 MHz	4-Way	6-8
50PD-497	800-2200 MHz	8-Way	6-8
50PD-519	2000-6000 MHz	2-Way	6-10
50PD-520	2000-6000 MHz	4-Way	6-10
50PD-521	2000-6000 MHz	8-Way	6-10
50PD-525	800-3000 MHz	3-Way	6-8

Assembly

	Frequency Range	Configuration	Page
<u>50 Ohm</u>			
50PDA-039	800-3000 MHz	12-Way	6-14
50PDA-040	800-3000 MHz	24-Way	6-14

High Power Reactive

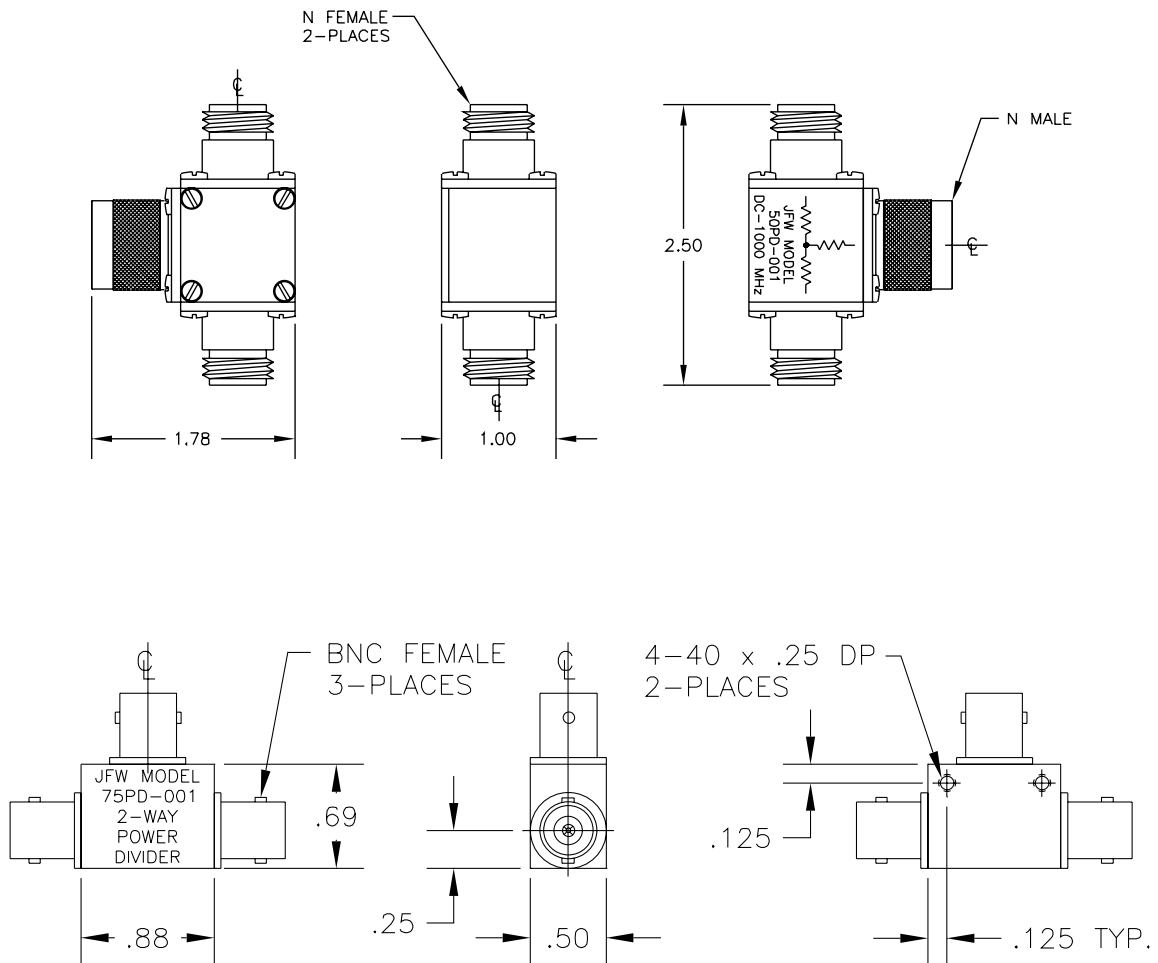
	Frequency Range	Configuration	Page
<u>50 Ohm</u>			
50PD-447	800-2500 MHz	2-Way	6-13
50PD-448	800-2500 MHz	4-Way	6-13
50PD-260	800-2000 MHz	2-Way	6-13

Resistive Power Dividers/Combiners

Model	Impedance	Configuration	Frequency Range	Power Division Asymmetry	Insertion Loss	VSWR Maximum	RF Connectors
50PD-001	50 Ohms	2-Way	DC-1000 MHz	+/- .1 dB DC-500 MHz +/- .2 dB 500-1000 MHz	6 dB +/- .3 dB	1.1:1 DC-500 MHz 1.2:1 500-1000 MHz	N male N female
50PD-015	50 Ohms	2-Way	DC-2550 MHz	+/- .1 dB DC-500 MHz +/- .2 dB 500-1000 MHz +/- .3 dB 1000-2550 MHz	6 dB +/- .3 dB DC-1000 MHz 6 dB +/- .5 dB 1000-2550 MHz	1.1:1 DC-500 MHz 1.2:1 500-1000 MHz 1.3:1 1000-2550 MHz	N male N female
75PD-001	75 Ohms	2-Way	DC-1000 MHz	+/- .2 dB DC-500 MHz +/- .4 dB 500-1000 MHz	6 dB +/- .4 dB	1.2:1 DC-500 MHz 1.3:1 500-1000 MHz	BNC or TNC female

Common Specifications

Input Power	Peak Power	Operating Temperature
1 Watt average @ 25° C	1000 Watts (1 microsecond)	-40° C to +85° C



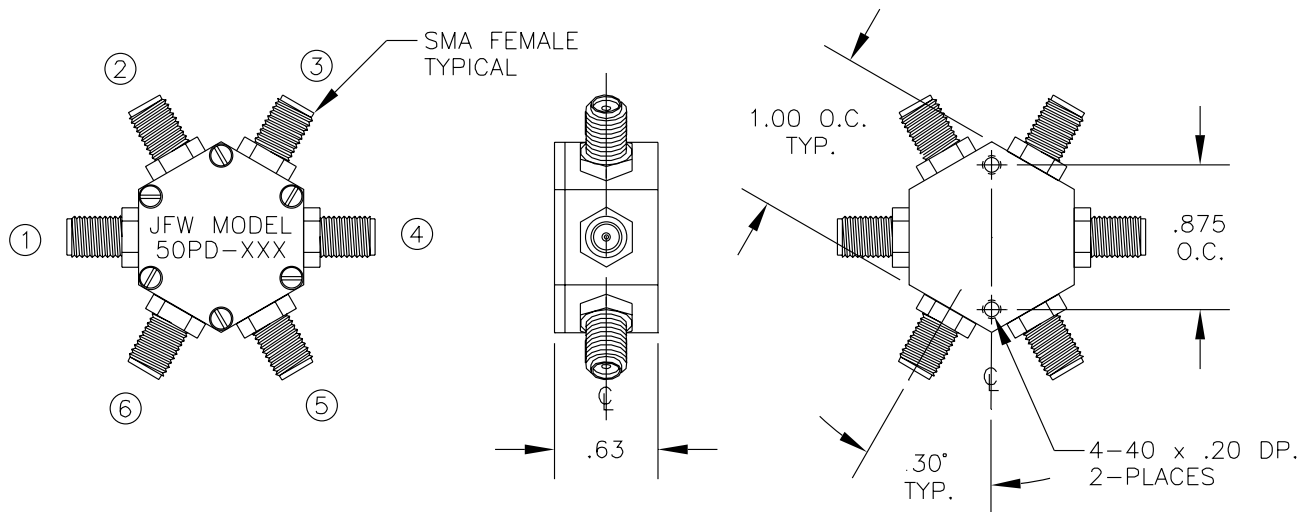
This catalog represents only 10% of our products. For YOUR application, please contact JFW at 1-877-887-4JFW

Resistive Power Dividers/Combiners

Model	Impedance	Configuration	Frequency Range	Power Division Asymmetry	Insertion Loss	VSWR Maximum	RF Connectors
50PD-016	50 Ohms	2-Way	DC-4000 MHz	+/- .1 dB DC-1000 MHz +/- .2 dB 1000-2000 MHz +/- .3 dB 2000-4000 MHz	6 dB +/- .3 dB DC-2000 MHz 6 dB +/- .5 dB 2000-4000 MHz	1.1:1 DC-1000 MHz 1.2:1 1000-2000 MHz 1.3:1 2000-4000 MHz	SMA female
50PD-017	50 Ohms	3-Way	DC-2000 MHz	+/- .1 dB DC-500 MHz +/- .2 dB 500-1000 MHz +/- .3 dB 1000-2000 MHz	9.5 dB +/- .5 dB	1.1:1 DC-500 MHz 1.2:1 500-2000 MHz	SMA female
50PD-292	50 Ohms	3-Way	DC-4000 MHz	+/- .5 db	9.5 dB +/- .5 dB	1.5:1	SMA female
50PD-018	50 Ohms	4-Way	DC-2000 MHz	+/- .2 dB DC-1000 MHz +/- .3 dB 1000-2000 MHz	12 dB +/- .3 dB DC-1000 MHz 12 dB +/- .5 dB 1000-2000 MHz	1.2:1	SMA female
50PD-293	50 Ohms	4-Way	DC-4000 MHz	+/- .7 dB	12 dB +/- .75 dB	1.5:1	SMA female
50PD-028	50 Ohms	5-Way	DC-1500 MHz	+/- .2 dB DC-1000 MHz +/- .3 dB 1000-1500 MHz	14 dB +/- .3 dB DC-1000 MHz 14 dB +/- .5 dB 1000-1500 MHz	1.2:1	SMA female

Common Specifications

Input Power	Peak Power	Operating Temperature
2 Watts average @ 25° C	100 Watts (1 microsecond)	-40° C to +85° C



CONFIG.	CONN. USED
2 WAY	1,3,5
3 WAY	1,3,4,5
4 WAY	1,2,3,5,6
5 WAY	1,2,3,4,5,6

This catalog represents only 10% of our products. For YOUR application, please contact JFW at 1-877-887-4JFW

Resistive Power Dividers/Combiners

50 Ohm

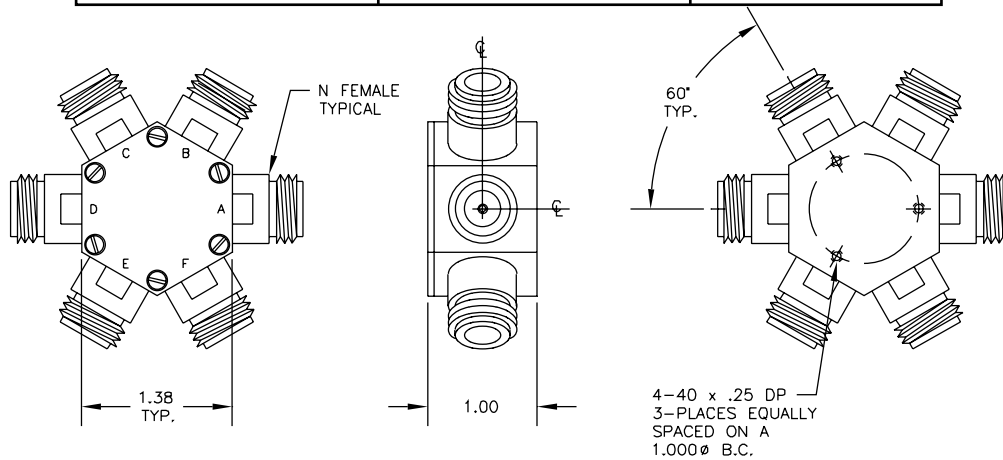
Model	Configuration	Frequency Range	Power Division Asymmetry	Insertion Loss	VSWR Maximum	RF Connectors
50PD-133	2-Way	DC-2000 MHz	+/- .3 dB	6 dB +/- .5 dB	1.2:1 DC-500 MHz 1.3:1 500-1000 MHz 1.4:1 1000-2000 MHz	BNC or N female
50PD-379	2-Way	DC-4000 MHz	+/- .5 dB	6 dB +/- .6 dB	1.35:1	N female
50PD-432	2-Way	DC-6000 MHz	+/- .3 dB	6 dB +/- .4 dB DC-4 GHz 6 dB +/- .6 dB 4-6 GHz	1.4:1	N female
50PD-134	3-Way	DC-2000 MHz	+/- .4 dB	9.5 dB +/- .5 dB	1.2:1 DC-500 MHz 1.3:1 500-1000 MHz 1.4:1 1000-2000 MHz	BNC or N female
50PD-135	4-Way	DC-2000 MHz	+/- .4 dB	12 dB +/- .5 dB	1.2:1 DC-500 MHz 1.3:1 500-1000 MHz 1.4:1 1000-2000 MHz	BNC or N female
50PD-136	5-Way	DC-2000 MHz	+/- .4 dB	14 dB +/- .5 dB	1.2:1 DC-500 MHz 1.3:1 500-1000 MHz 1.4:1 1000-2000 MHz	BNC or N female

75 Ohm

Model	Configuration	Frequency Range	Power Division Asymmetry	Insertion Loss	VSWR Maximum	RF Connectors
75PD-045	2-Way	DC-2200 MHz	+/- .3 dB	6 dB +/- .5 dB	1.2:1 DC-500 MHz 1.3:1 500-1000 MHz 1.4:1 1000-2200 MHz	BNC, F or N female
75PD-046	3-Way	DC-2000 MHz	+/- .4 dB	9.5 dB +/- .5 dB	1.2:1 DC-500 MHz 1.3:1 500-1000 MHz 1.4:1 1000-2000 MHz	BNC, F or N female
75PD-047	4-Way	DC-2000 MHz	+/- .4 dB	12 dB +/- .5 dB	1.2:1 DC-500 MHz 1.3:1 500-1000 MHz 1.4:1 1000-2000 MHz	BNC, F or N female
75PD-048	5-Way	DC-2000 MHz	+/- .4 dB	14 dB +/- .5 dB	1.2:1 DC-500 MHz 1.3:1 500-1000 MHz 1.4:1 1000-2000 MHz	BNC, F or N female

Common Specifications

Input Power	Peak Power	Operating Temperature
2 Watts average @ 25° C	100 Watts (1 microsecond)	-40° C to +85° C



CONFIG.	A	B	C	D	E	F
2 WAY	J1	-	J2	-	J3	-
3 WAY	J1	-	J2	J3	J4	-
4 WAY	J1	J2	J3	-	J4	J5
5 WAY	J1	J2	J3	J4	J5	J6

This catalog represents only 10% of our products. For YOUR application, please contact JFW at 1-877-887-4JFW

Reactive Power Dividers/Combiners

Standard/Any Connector

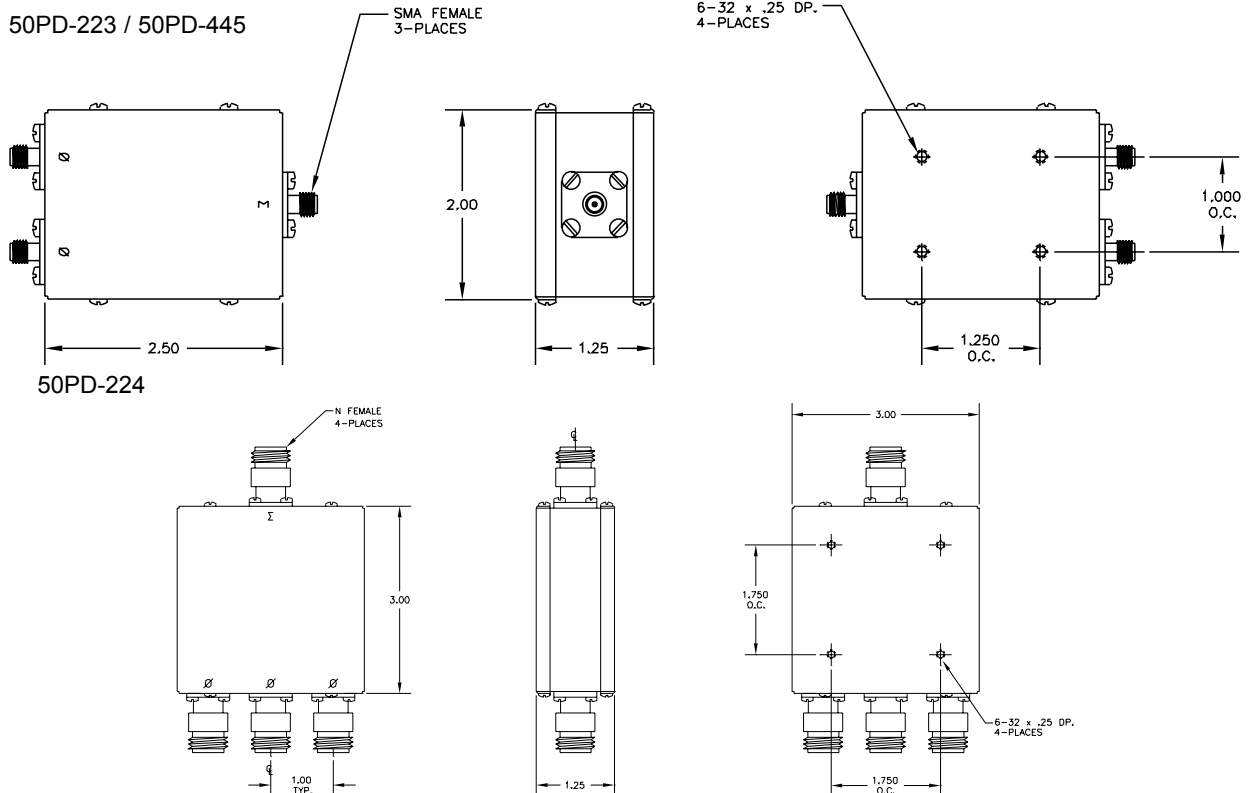
Model	Configuration	Frequency Range	Power Division Asymmetry	Insertion Loss	VSWR Maximum	Phase Balance	Isolation Minimum
50PD-223	2-Way	800-2200 MHz	+/- .3 dB	.6 dB maximum (above 3 dB split)	1.5:1	+/- 5°	20 dB
50PD-224	3-Way	800-2200 MHz	+/- .5 dB	.6 dB maximum (above 4.8 dB split)	1.5:1	+/- 5°	20 dB
50PD-454	4-Way	800-2200 MHz	+/- .4 dB	.8 dB maximum (above 6 dB split)	1.5:1	+/- 5°	20 dB
50PD-455	6-Way	800-2200 MHz	+/- .75 dB	1.3 dB maximum (above 7.8 dB split)	1.5:1	+/- 5°	18 dB
50PD-456	8-Way	800-2200 MHz	+/- .5 dB	1.2 dB maximum (above 9 dB split)	1.5:1	+/- 5°	20 dB

Wideband/Any Connector

Model	Configuration	Frequency Range	Power Division Asymmetry	Insertion Loss	VSWR Maximum	Phase Balance	Isolation Minimum
50PD-445	2-Way	400-3000 MHz	+/- .3 dB	1 dB maximum, .3 dB typical @ 400 MHz .7 dB typical @ 3000 MHz (above 3 dB split)	1.45:1	+/- 4°	20 dB

Common Specifications

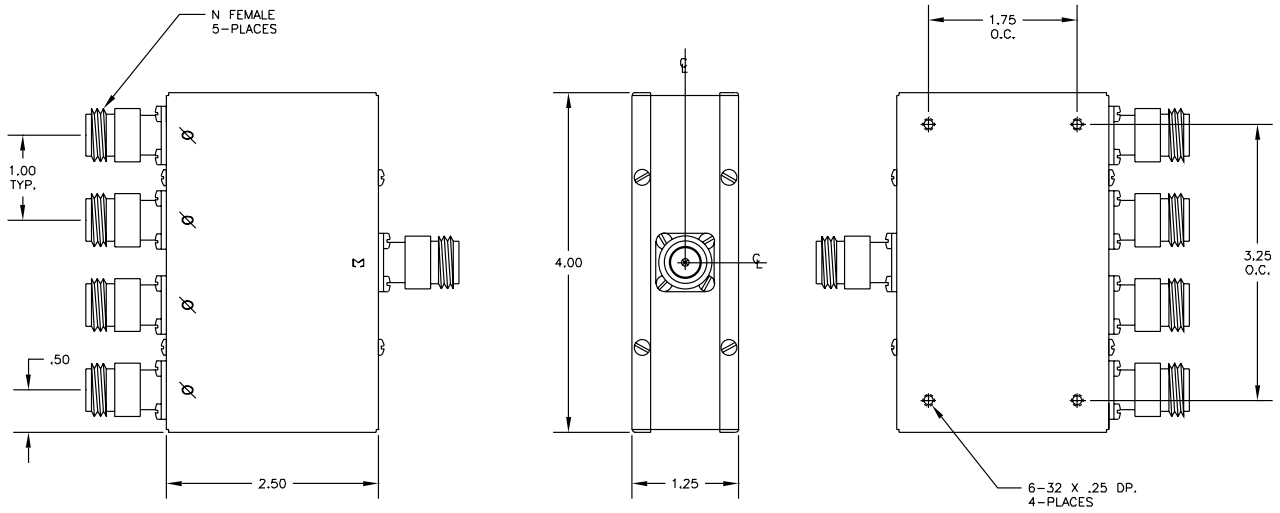
Impedance	Matched Input Power	Operating Temperature	RF Connectors
50 Ohms	5 Watts average @ 25° C 100 Watts peak (1 microsecond)	-40° C to +85° C	SMA, BNC, TNC or N female



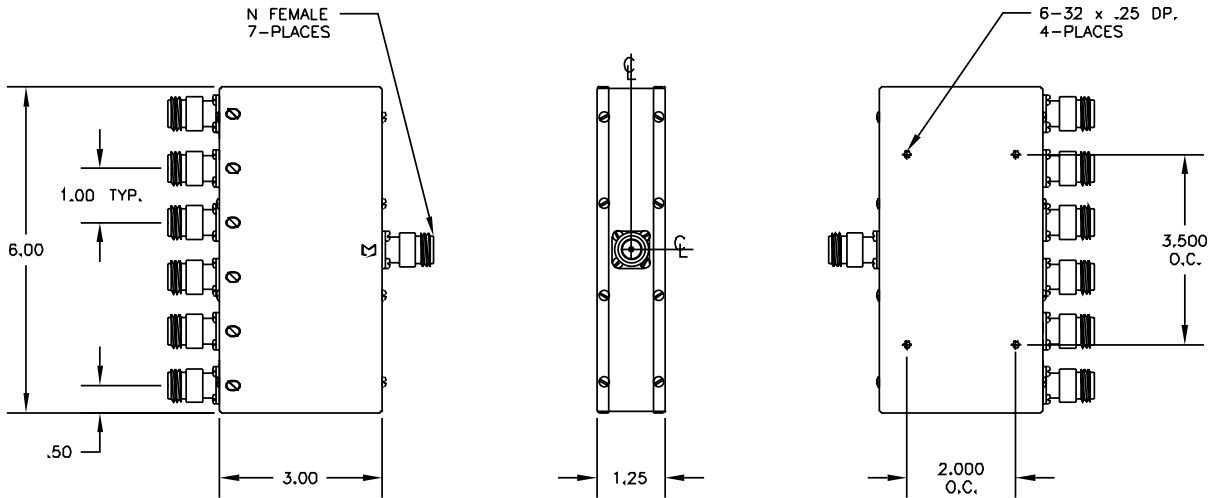
This catalog represents only 10% of our products. For YOUR application, please contact JFW at 1-877-887-4JFW

Reactive Power Dividers/Combiners

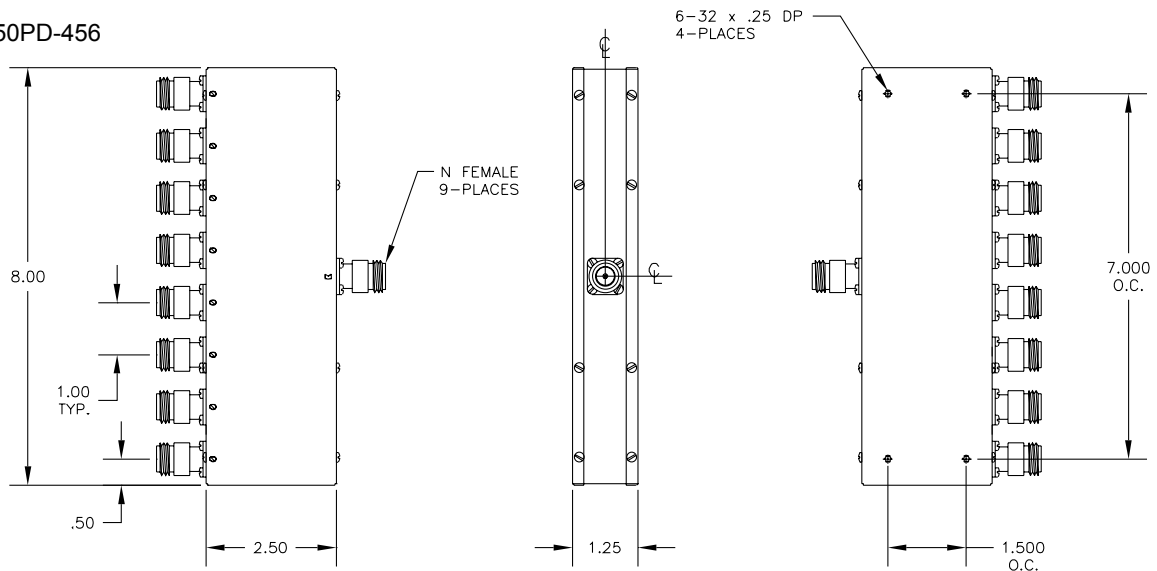
50PD-454



50PD-455



50PD-456



This catalog represents only 10% of our products. For YOUR application, please contact JFW at 1-877-887-4JFW

Reactive Power Dividers/Combiners

Standard SMA Only/Small Package

Model	Configuration	Frequency Range	Power Division Asymmetry	Insertion Loss	VSWR Maximum	Phase Balance	Isolation Minimum
50PD-232	2-Way	800-2200 MHz	+/- .3 dB	.6 dB maximum (above 3 dB split)	1.4:1	+/- 5°	20 dB
50PD-233	4-Way	800-2200 MHz	+/- .4 dB	.8 dB maximum (above 6 dB split)	1.5:1	+/- 5°	20 dB
50PD-234	8-Way	800-2200 MHz	+/- .4 dB	1 dB maximum (above 9 dB split)	1.5:1	+/- 5°	20 dB

Wideband SMA Only/Small Package

Model	Configuration	Frequency Range	Power Division Asymmetry	Insertion Loss	VSWR Maximum	Phase Balance	Isolation Minimum
50PD-254	2-Way	800-3000 MHz	+/- .3 dB	.6 dB maximum (above 3 dB split)	1.4:1	+/- 5°	20 dB
50PD-525	3-Way	800-3000 MHz	+/- .3 dB	.6 dB maximum (above 4.8 dB split)	1.5:1	+/- 5°	20 dB
50PD-255	4-Way	800-3000 MHz	+/- .4 dB	1 dB maximum (above 6 dB split)	1.5:1	+/- 5°	20 dB
50PD-282	8-Way	800-3000 MHz	+/- .4 dB	1.2 dB maximum (above 9 dB split)	1.5:1	+/- 5°	20 dB

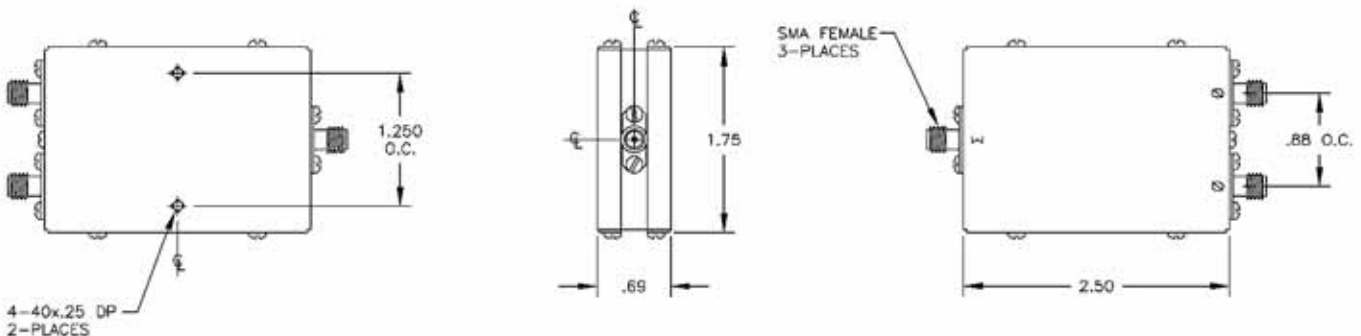
High Isolation SMA Only/Small Package

Model	Configuration	Frequency Range	Power Division Asymmetry	Insertion Loss	VSWR Maximum	Phase Balance	Isolation Minimum
50PD-495	2-Way	800-2200 MHz	+/- .1 dB	.3 dB maximum (above 3 dB split)	1.2:1	+/- 1°	30 dB
50PD-496	4-Way	800-2200 MHz	+/- .15 dB	.6 dB maximum (above 6 dB split)	1.35:1	+/- 3°	27 dB
50PD-497	8-Way	800-2200 MHz	+/- .3 dB	.9 dB maximum (above 9 dB split)	1.4:1	+/- 5°	27 dB

Common Specifications

Impedance	Matched Input Power	Operating Temperature	RF Connectors
50 Ohms	5 Watts average @ 25° C 100 Watts peak (1 μSec)	-40° C to +85° C	SMA female

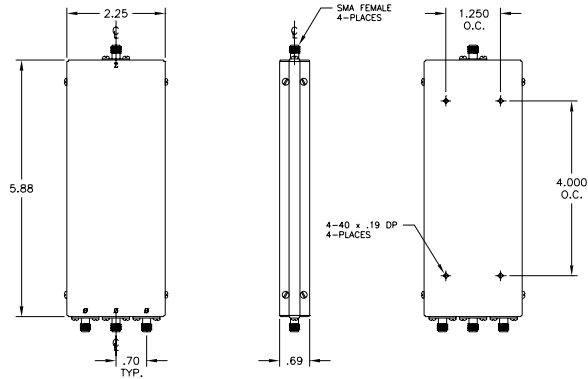
50PD-232 / 50PD-254 / 50PD-495



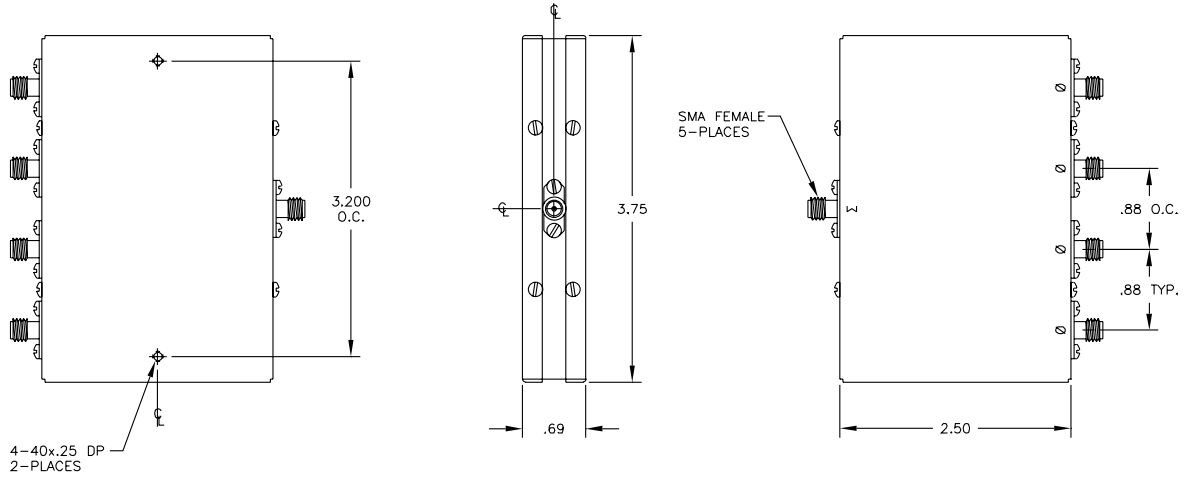
This catalog represents only 10% of our products. For YOUR application, please contact JFW at 1-877-887-4JFW

Reactive Power Dividers/Combiners

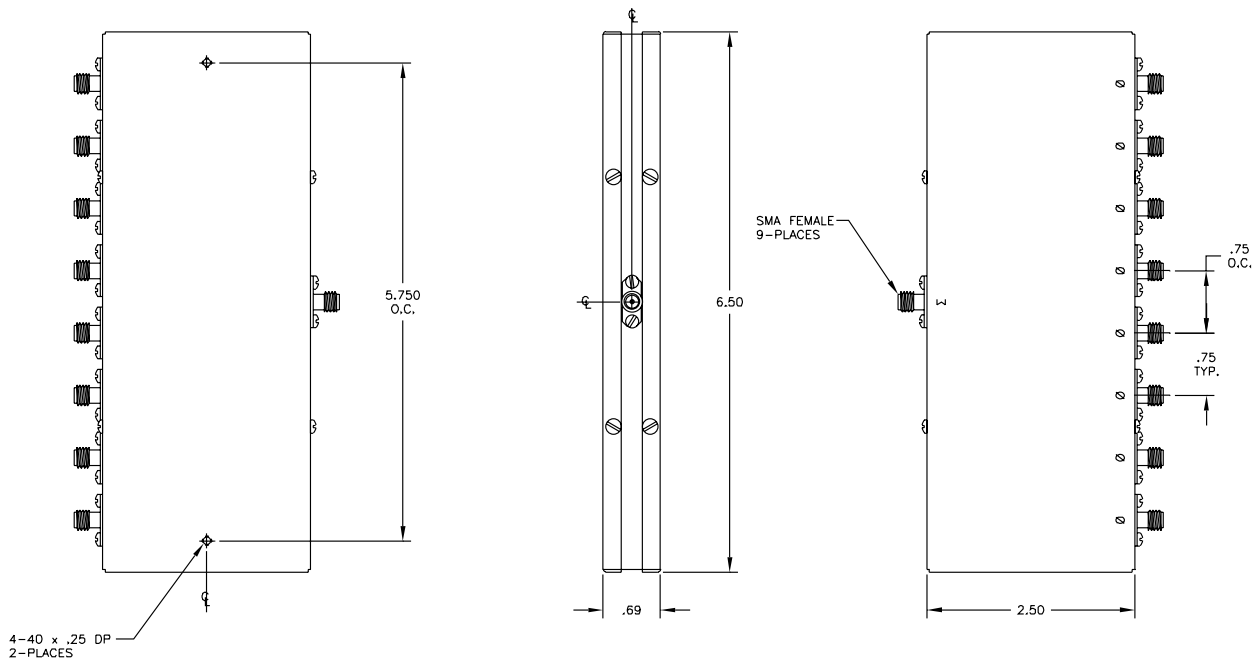
50PD-525



50PD-233 / 50PD-255 / 50PD-496



50PD-234 / 50PD-282 / 50PD-497



This catalog represents only 10% of our products. For YOUR application, please contact JFW at 1-877-887-4JFW

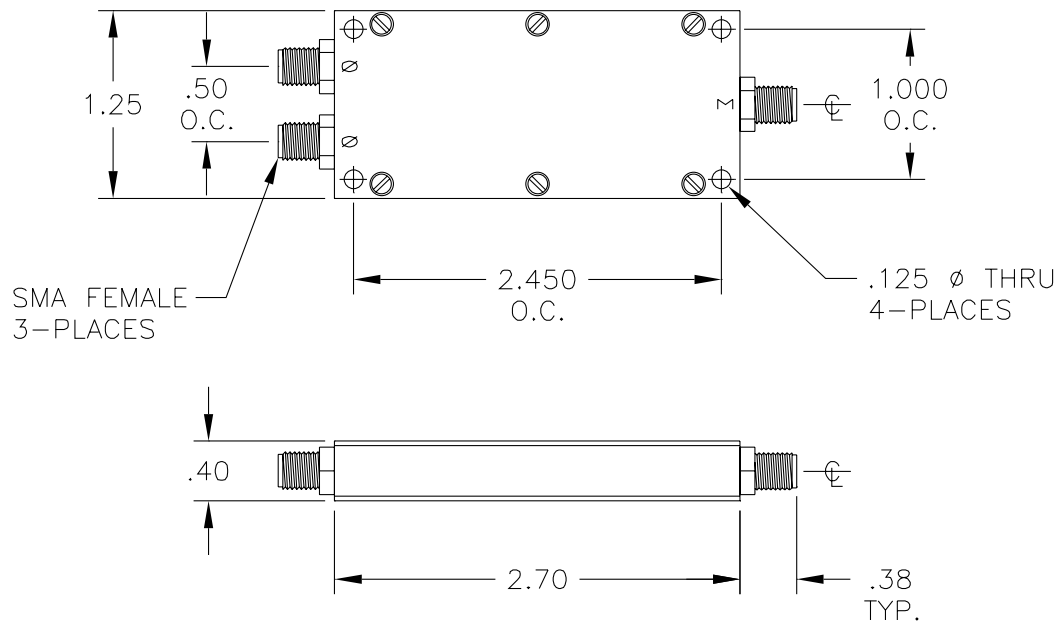
WLAN Reactive Power Dividers/Combiners

Model	Configuration	Frequency Range	Power Division Asymmetry	Insertion Loss Maximum	VSWR Maximum	Phase Balance	Isolation Minimum
50PD-519	2-Way	2000-6000 MHz	+/- .2 dB	.2 dB typical @ 2000 MHz .4 dB typical @ 6000 MHz .6 dB maximum (above 3 dB split)	1.35:1	+/- 3°	20 dB
50PD-520	4-Way	2000-6000 MHz	+/- .4 dB	.2 dB typical @ 2000 MHz .8 dB typical @ 6000 MHz 1.1 dB maximum (above 6 dB split)	1.5:1	+/- 5°	20 dB
50PD-521	8-Way	2000-6000 MHz	+/- .5 dB	.5 dB typical @ 2000 MHz 1.35 dB typical @ 6000 MHz 1.7 dB maximum (above 9 dB split)	1.6:1	+/- 8°	20 dB

Common Specifications

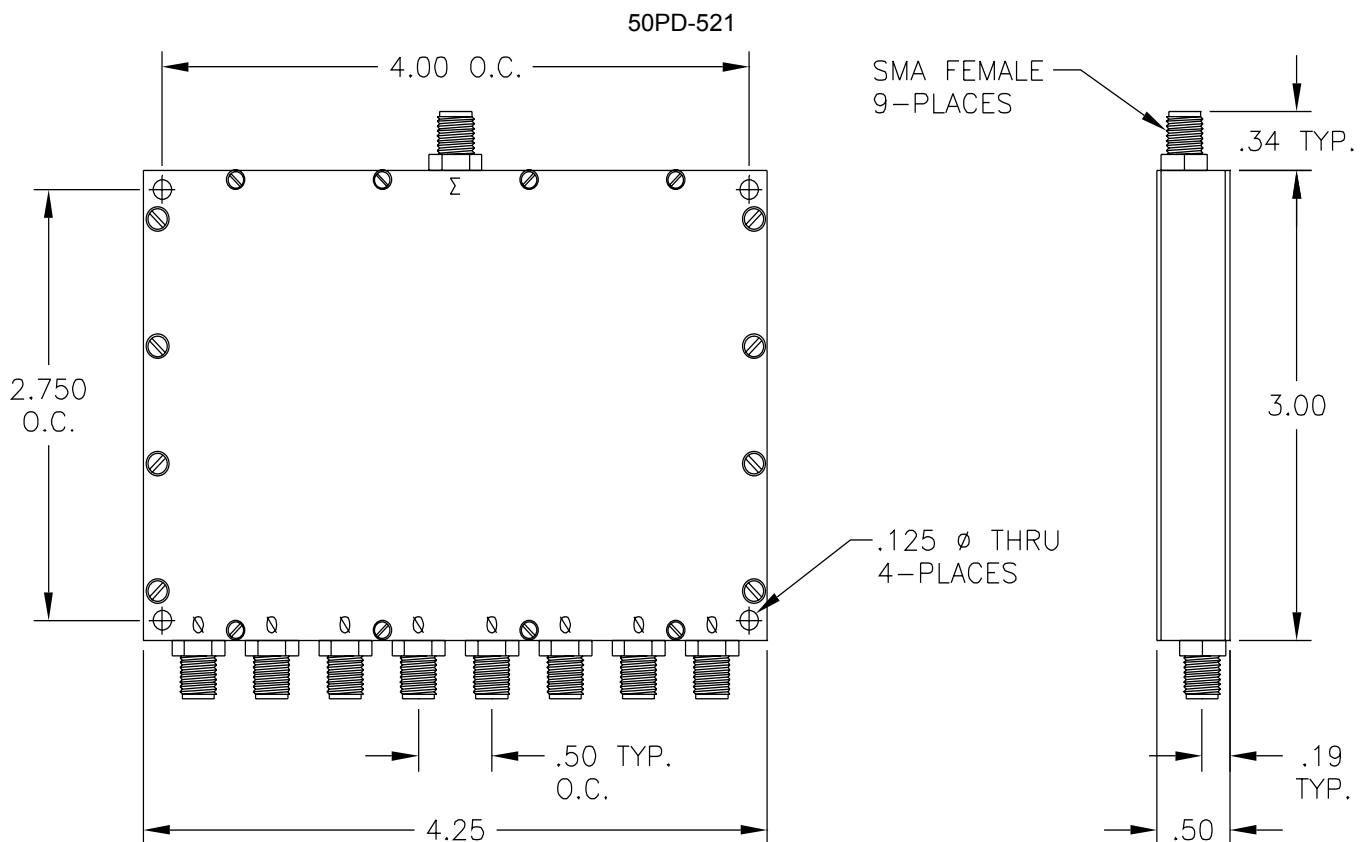
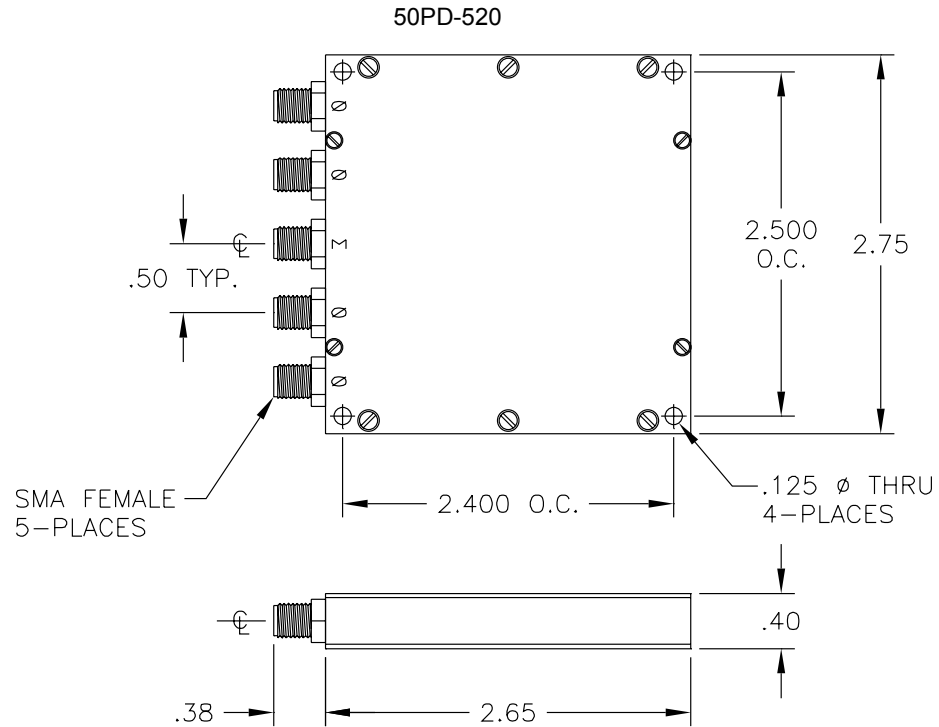
Input Power	Peak Power	Operating Temperature
5 Watts average @ 25° C	100 Watts (1 microsecond)	-40° C to +85° C

50PD-519



This catalog represents only 10% of our products. For YOUR application, please contact JFW at 1-877-887-4JFW

WLAN Reactive Power Dividers/Combiners



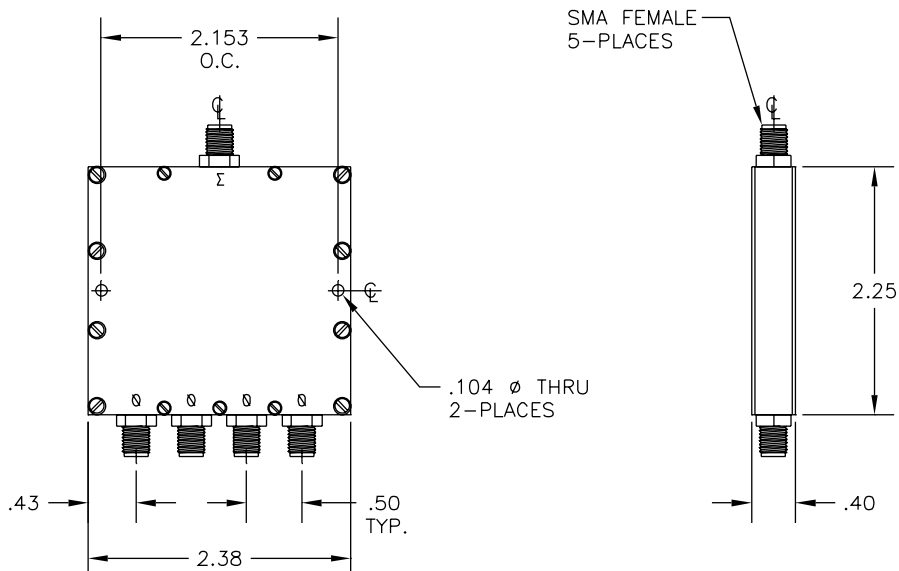
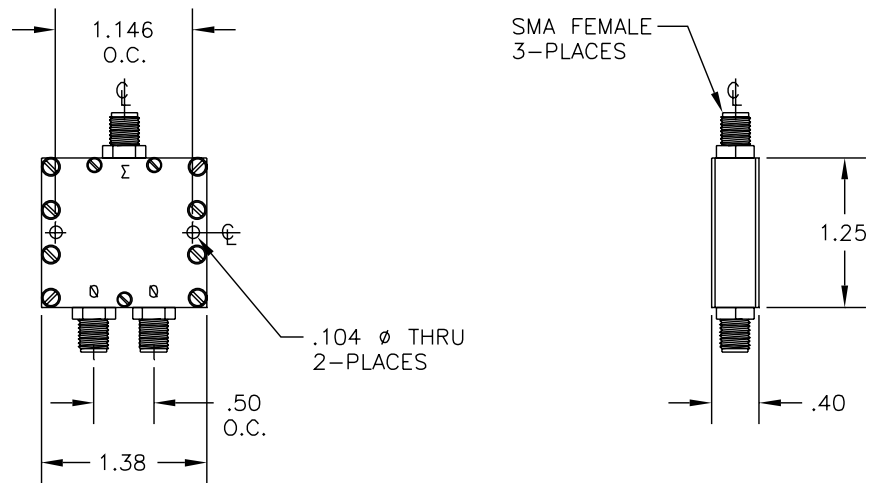
This catalog represents only 10% of our products. For YOUR application, please contact JFW at 1-877-887-4JFW

Reactive Power Dividers/Combiners

Mini - Package

Model	Impedance	Configuration	Frequency Range	Power Division Asymmetry	Insertion Loss Maximum	VSWR Maximum	RF Connectors
50PD-243	50 Ohms	2-way	800-2200 MHz	+/- .25 dB	.5 dB (above 3 dB split)	1.3:1	SMA female
50PD-244	50 Ohms	4-way	800-2200 MHz	+/- .4 dB	.8 dB (above 6 dB split)	1.4:1	SMA female

Model	Isolation (minimum)	Phase Balance	Input Power Matched	Peak Power	Operating Temperature
50PD-243	20 dB	+/- 3°	Divider 5 Watts Average @ 25° C Combiner 2.5 Watts Average @ 25° C	100 Watts Peak (1 microsecond)	-40° C to +85° C
50PD-244	20 dB	+/- 5°	Divider 5 Watts Average @ 25° C Combiner 2.5 Watts Average @ 25° C	100 Watts Peak (1 microsecond)	-40° C to +85° C

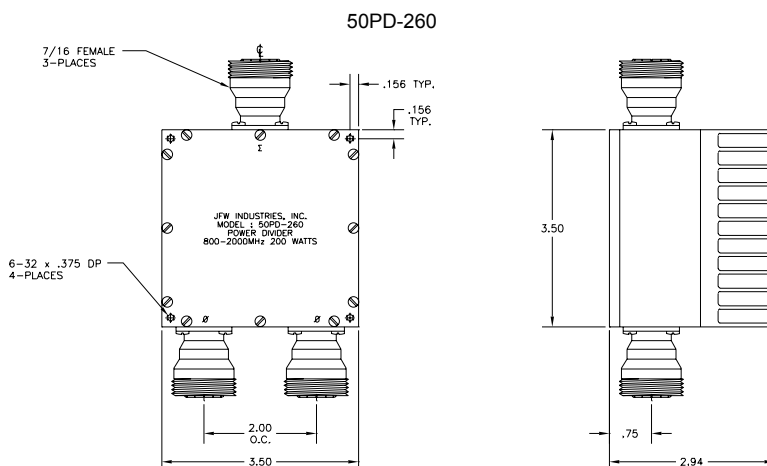
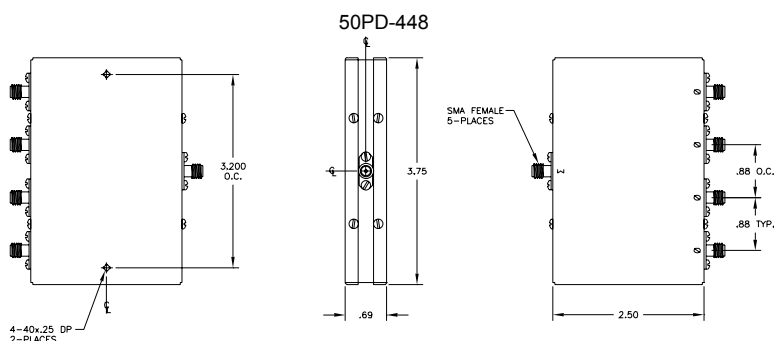
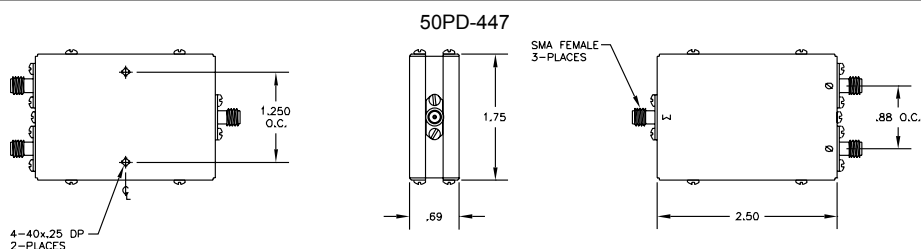


This catalog represents only 10% of our products. For YOUR application, please contact JFW at 1-877-887-4JFW

High Power Reactive Power Dividers/Combiners

Model	Impedance	Configuration	Frequency Range	Power Division Asymmetry	Insertion Loss	VSWR Maximum	RF Connectors
50PD-447	50 Ohms	2-Way	800-2500 MHz	+/- .2 dB	.5 dB typical .75 maximum (above 3 dB split)	1.3:1	SMA female
50PD-448	50 Ohms	4-Way	800-2500 MHz	+/- .3 dB	1 dB typical 1.5 maximum (above 6 dB split)	1.4:1	SMA female
50PD-260	50 Ohms	2-Way	800-2000 MHz	+/- .3 dB	.8 dB (above 3 dB split)	1.5:1	N or 7/16 female

Model	Isolation	Phase Balance	Input Power Matched	Peak Power	Operating Temperature
50PD-447	20 dB	+/- 2°	40 Watts average (common port) 20 Watts average (per port)	100 Watts (1 microsecond)	-40° C to +85° C
50PD-448	20 dB	+/- 5°	40 Watts average (common port) 10 Watts average (per port)	100 Watts (1 microsecond)	-40° C to +85° C
50PD-260	20 dB	+/- 5°	200 Watts average (common port) 100 Watts average (per port)	1000 Watts (1 microsecond)	-40° C to +85° C



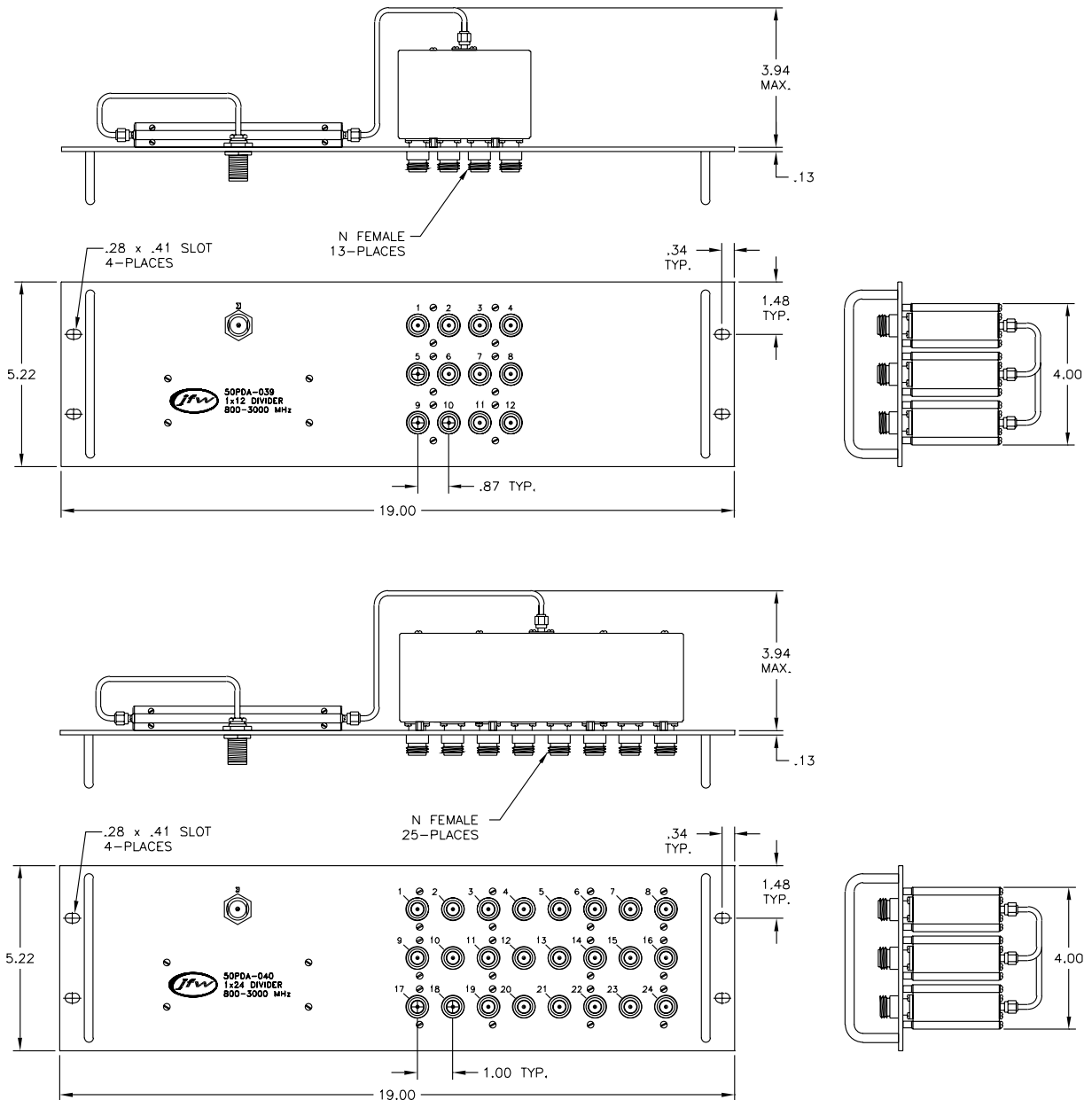
This catalog represents only 10% of our products. For YOUR application, please contact JFW at 1-877-887-4JFW

Power Dividers/Combiners Assembly

Model	Configuration	Frequency Range	Power Division Asymmetry	Insertion Loss Maximum	VSWR Maximum	Phase Balance	Isolation Minimum
50PDA-039	12-Way	800-3000 MHz	+/- .75 dB	1.75 dB (above 10.8 dB split)	1.6:1	+/- 10°	20 dB
50PDA-040	24-Way	800-3000 MHz	+/- .9 dB	1.9 dB (above 13.8 dB split)	1.6:1	+/- 10°	20 dB

Common Specifications

Input Power	Peak Power	Operating Temperature
5 Watts average @ 25° C	100 Watts (1 microsecond)	-40° C to +85° C



This catalog represents only 10% of our products. For YOUR application, please contact JFW at 1-877-887-4JFW