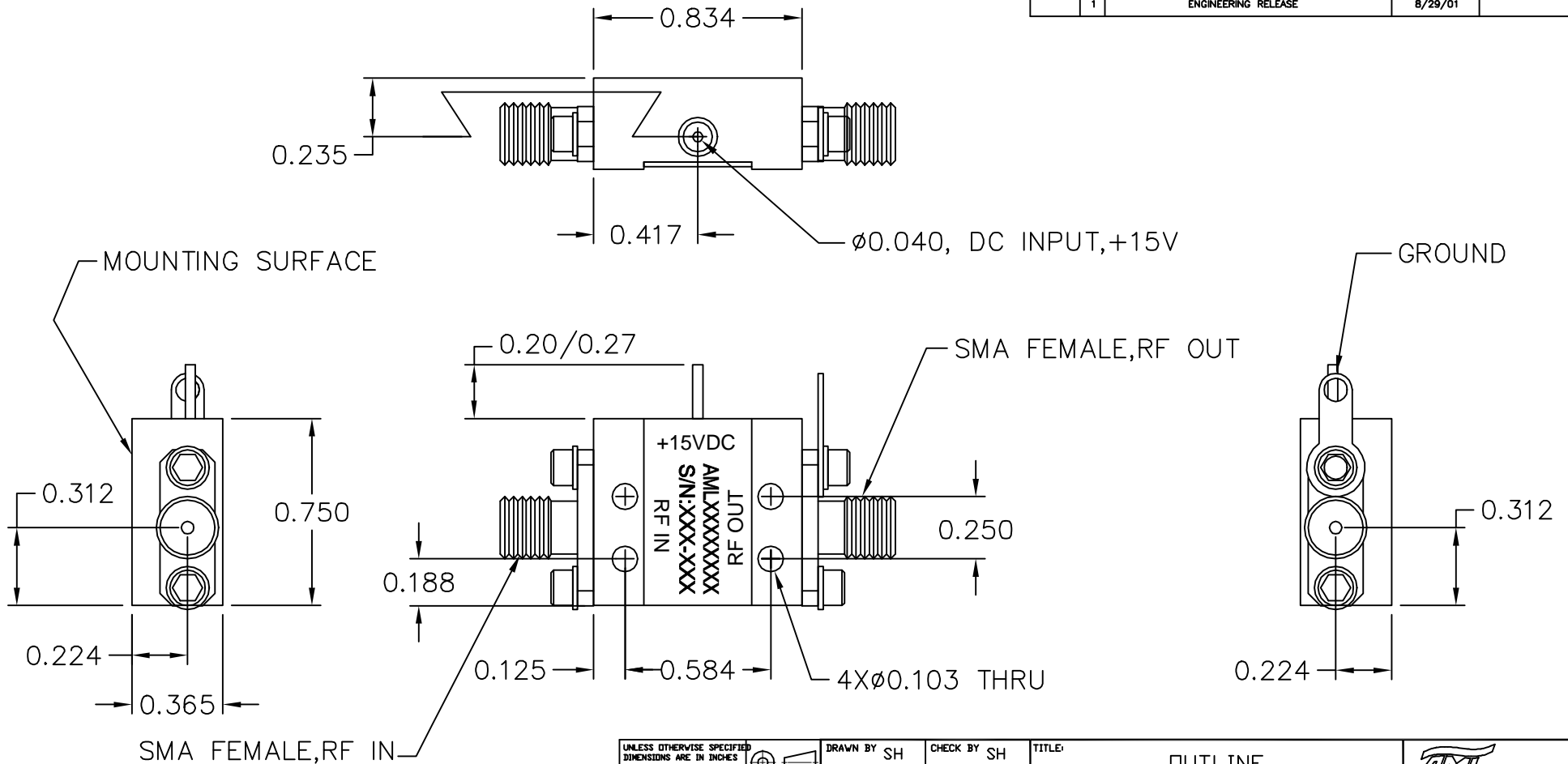


REVISIONS				
ECD#	REV	DESCRIPTION	DATE	APPROVED
	1	ENGINEERING RELEASE	8/29/01	



NOTES:  
 1. MARK LABEL (003-0231) AS SHOWN.  
 MARK SERIAL NUMBER, DATE CODE AND  
 MODEL NUMBER AS PER TRAVELER.

<small>UNLESS OTHERWISE SPECIFIED          DIMENSIONS ARE IN INCHES          TOLERANCES ARE:          DECIMALS ANGLES          .XX ± 0.01 ± 5°          .XXX ± .003</small>	 <small>THIRD ANGLE          PROJECTION</small>	<small>DRAWN BY</small> SH	<small>CHECK BY</small> SH	<small>TITLE:</small> OUTLINE CATALOG (B2)	 <small>CAMARILLO, CALIFORNIA, USA</small>
		<small>DESIGNED BY</small> SH	<small>APPROVED</small>		
<small>MATERIAL</small> ALUM ALLOY 6061	<small>ENGR</small>	<small>ENGR</small>	<small>DATE</small> 8/28/01	<small>SCALE</small> 2X	<small>SHEET NUMBER</small> 1 OF 1
<small>FINISH</small> ELECTROLESS NI MIL-C-26074C 0.0003/0.0005 THICK	<small>MFG ENGR</small>	<small>QA</small>	<small>GENERAL FABRICATION NOTES: (UNLESS OTHERWISE NOTED)</small> 1. REMOVE ALL BURRS AND BREAK SHARP EDGES. 2. DIMENSIONS APPLY AFTER FINISH. 3. ALL BENDS TO BE 90°. 4.  MAX. MACHINE FINISH.	<small>DRAWING NUMBER</small> 002-0133	<small>SIZE</small> B
<small>DO NOT SCALE DRAWING</small>	<small>RELEASED BY:</small>	<small>GENERAL ASSEMBLY NOTES: (UNLESS OTHERWISE NOTED)</small> 1. ASSEMBLE AS PER WORKMANSHIP REQUIREMENTS OF IPC-A-610, CLASS 2	<small>REV</small> 1	<small>REV</small> 1	<small>REV</small> 1