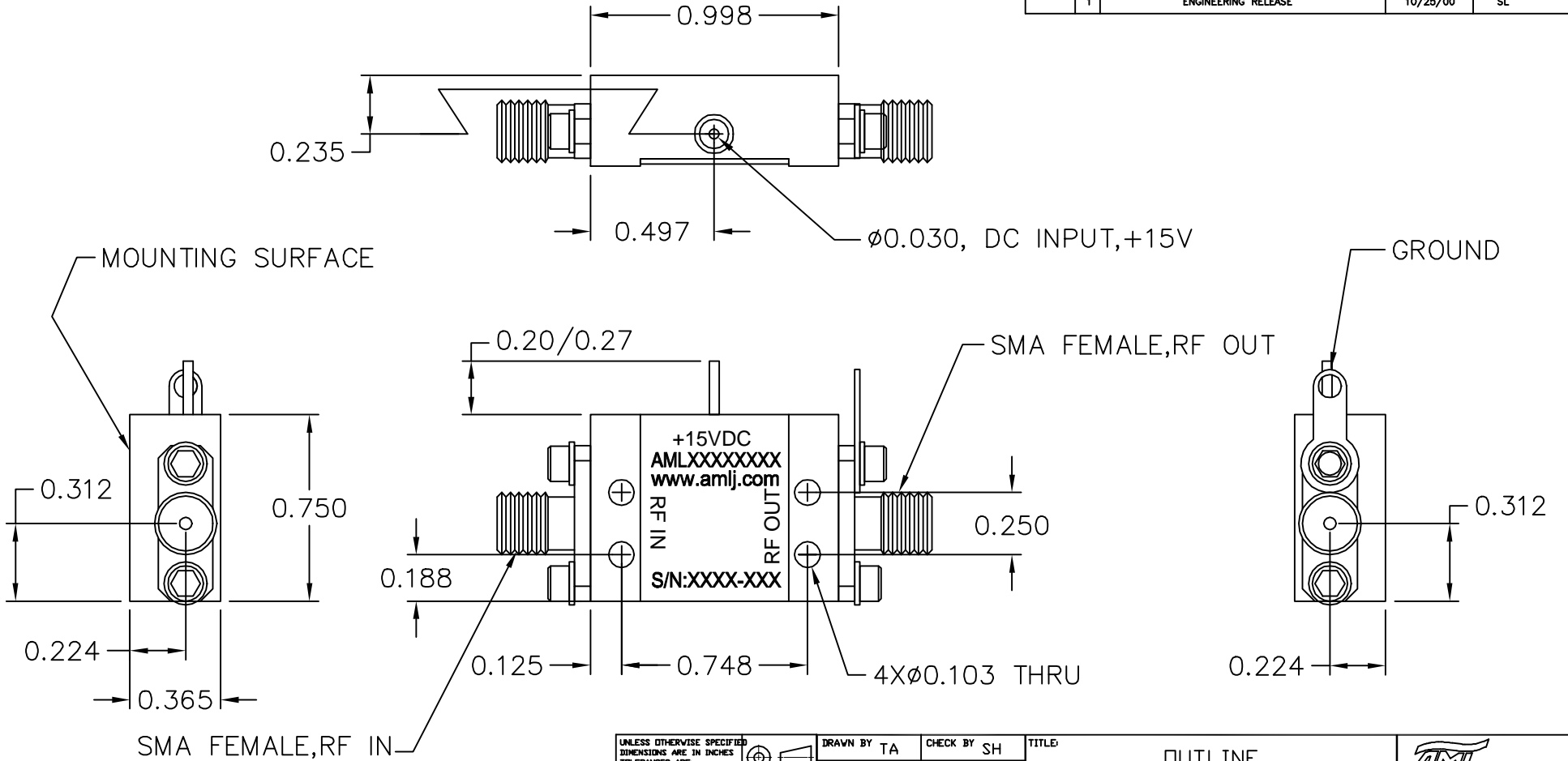


| REVISIONS | | | | |
|-----------|-----|---------------------|----------|----------|
| ECD# | REV | DESCRIPTION | DATE | APPROVED |
| | 1 | ENGINEERING RELEASE | 10/25/00 | SL |



NOTES:
 1. MARK LABEL (003-0231) AS SHOWN.
 MARK SERIAL NUMBER, DATE CODE AND
 MODEL NUMBER AS PER TRAVELER.

| | | | | | |
|---|-------------------------------|--|--|----------------------------|--|
| <small>UNLESS OTHERWISE SPECIFIED DIMENSIONS ARE IN INCHES TOLERANCES ARE: DECIMALS ANGLES .XX ± 0.01 ± 5° .XXX ± .003</small> | THIRD ANGLE PROJECTION | DRAWN BY TA CHECK BY SH DESIGNED BY SH APPROVED _____ DATE _____ | TITLE: OUTLINE CATALOG (B3) | | CAMARILLO, CALIFORNIA, USA BOM NUMBER _____ |
| | | MATERIAL: ALUM ALLOY 6061 FINISH: ELECTROLESS NI MIL-C-26074C 0.0003/0.0005 THICK DO NOT SCALE DRAWING | ENGR _____ MFG ENGR _____ QA _____ RELEASED BY: _____ | SCALE: 2X DATE: 7/30/01 | |