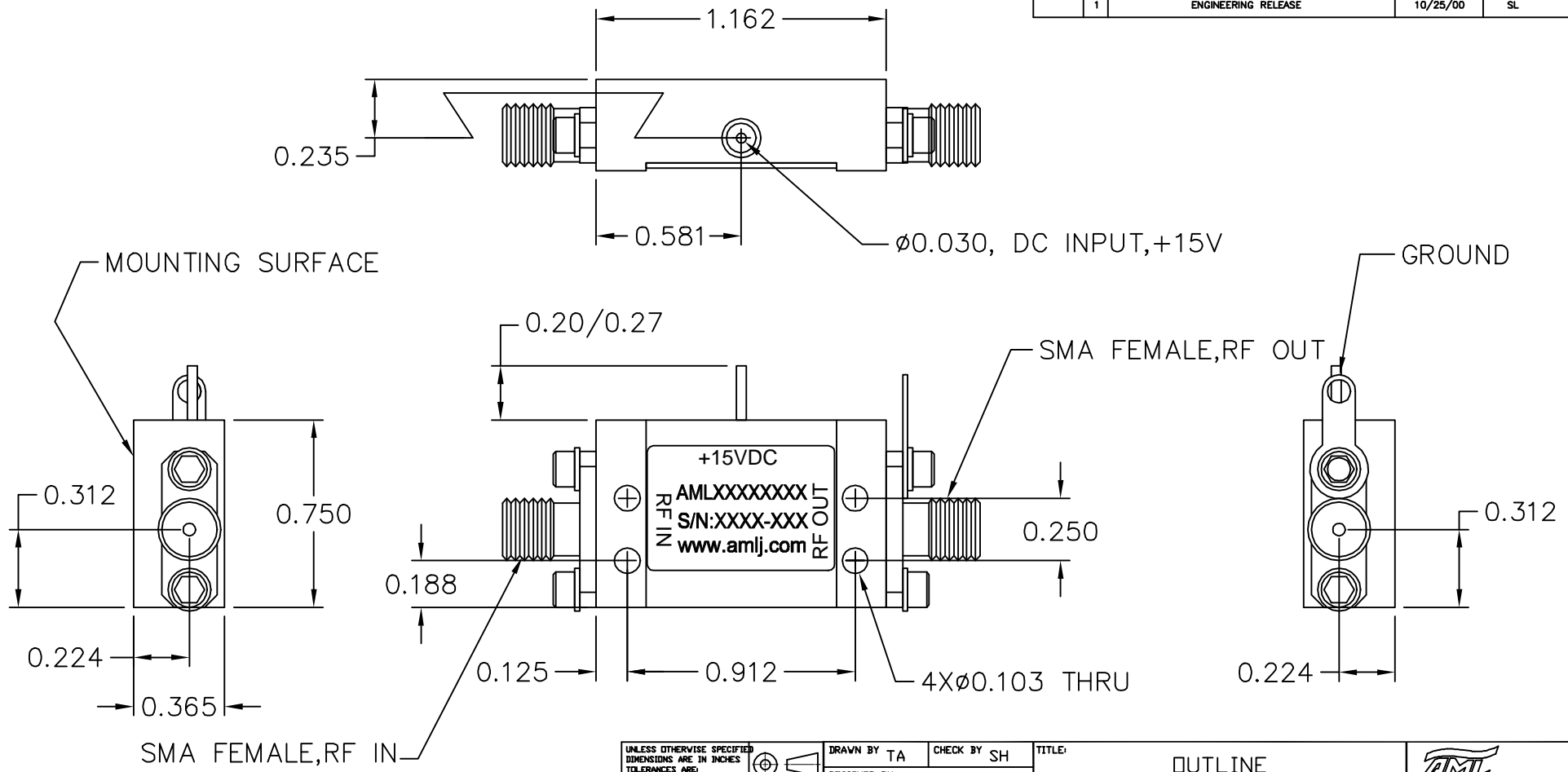


REVISIONS				
ECC#	REV	DESCRIPTION	DATE	APPROVED
	1	ENGINEERING RELEASE	10/25/00	SL



NOTES:
 1. MARK LABEL (003-0231) AS SHOWN.
 MARK SERIAL NUMBER, DATE CODE AND
 MODEL NUMBER AS PER TRAVELER.

<small>UNLESS OTHERWISE SPECIFIED DIMENSIONS ARE IN INCHES TOLERANCES ARE: DECIMALS ANGLES .XX ± 0.01 ± 5° .XXX ± .003</small>		DRAWN BY TA CHECK BY SH	TITLE: OUTLINE CATALOG (B4)	 <small>CAMARILLO, CALIFORNIA, USA</small>
		DESIGNED BY SH		
MATERIAL ALUM ALLOY 6061	ENGR	ENGR	SCALE: 2X DATE: 7/30/01	BOM NUMBER
FINISH ELECTROLESS NI MIL-C-26074C 0.0003/0.0005 THICK	MFG ENGR	QA	<small>GENERAL FABRICATION NOTES: (UNLESS OTHERWISE NOTED) 1. REMOVE ALL BURRS AND BREAK SHARP EDGES. 2. DIMENSIONS APPLY AFTER FINISH. 3. ALL BENDS TO BE 90°. 4. 63° MAX. MACHINE FINISH.</small>	SHEET NUMBER 1 OF 1 SIZE B
NOT SCALE DRAWING	RELEASED BY:	<small>GENERAL ASSEMBLY NOTES: (UNLESS OTHERWISE NOTED) 1. ASSEMBLE AS PER WORKMANSHIP REQUIREMENTS OF IPC-A-610, CLASS 2</small>	DRAWING NUMBER 002-0115 REV 1	