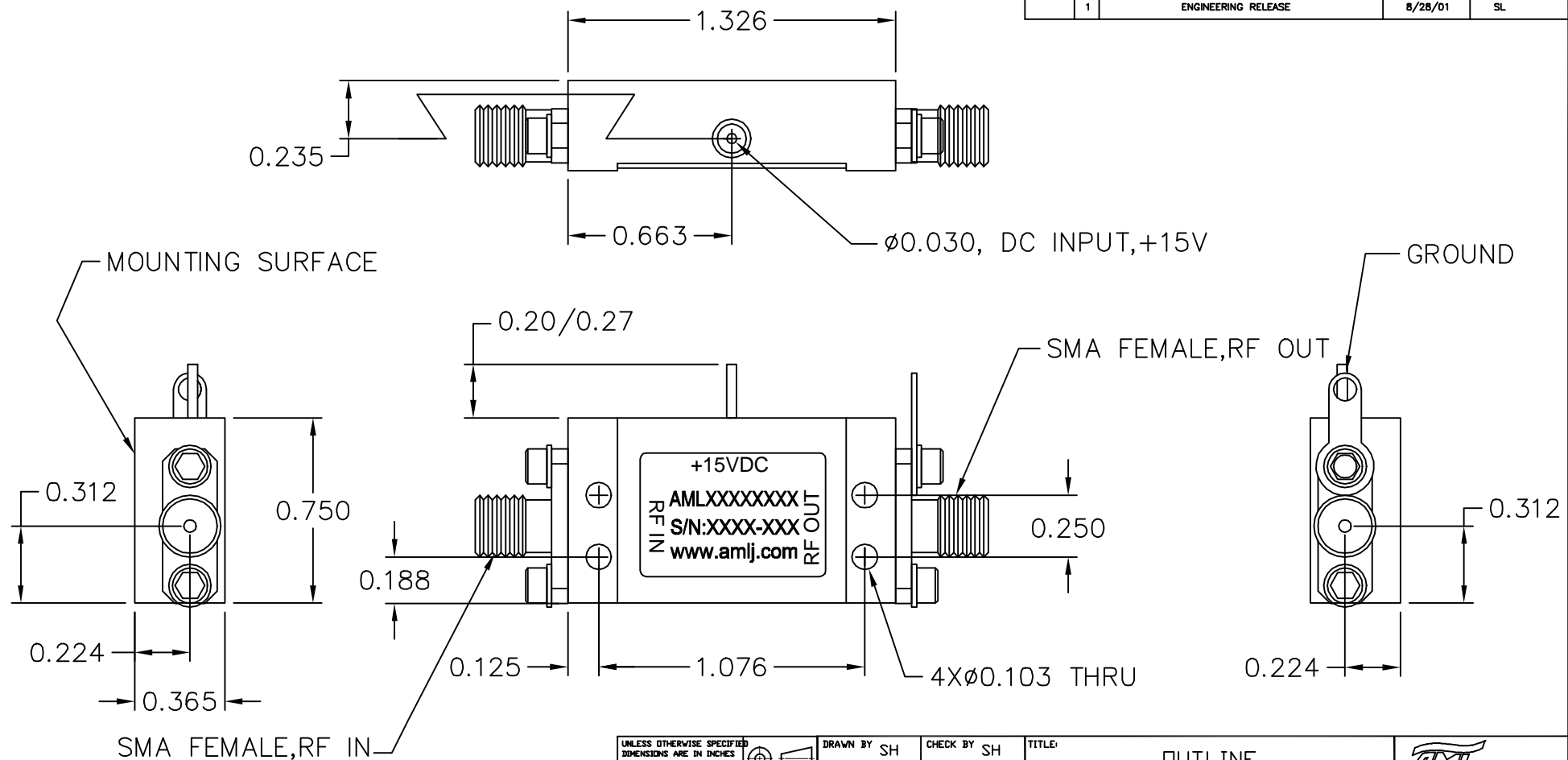


| REVISIONS |     |                     |         |          |
|-----------|-----|---------------------|---------|----------|
| ECD#      | REV | DESCRIPTION         | DATE    | APPROVED |
|           | 1   | ENGINEERING RELEASE | 8/28/01 | SL       |



NOTES:  
 1. MARK LABEL (003-0231) AS SHOWN.  
 MARK SERIAL NUMBER, DATE CODE AND  
 MODEL NUMBER AS PER TRAVELER.

|  |  |   |                            |   |                      |   |
|--|--|---|----------------------------|---|----------------------|---|
| <small>UNLESS OTHERWISE SPECIFIED<br/>         DIMENSIONS ARE IN INCHES<br/>         TOLERANCES ARE:<br/>         DECIMALS .XX ± 0.01<br/>         .XXX ± 0.03</small> | <br><small>THIRD ANGLE<br/>         PROJECTION</small> | <small>DRAWN BY</small> SH  | <small>CHECK BY</small> SH | <small>TITLE:</small>                     |                      | <br><small>CAMARILLO, CALIFORNIA, USA</small> |
|  |  | <small>DESIGNED BY</small> SH   | <small>APPROVED</small>    | <small>DATE</small>                       | OUTLINE CATALOG (B5) |   |
| <small>MATERIAL</small><br>ALUM ALLDY 6061   | <small>ENGR</small>                                    | <small>SCALE:</small> 2X  |                            | <small>DATE:</small> 8/28/01              |                      | <small>BOM NUMBER</small>                     |
| <small>FINISH</small><br>ELECTROLESS NI<br>MIL-C-26074C<br>0.0003/0.0005 THICK   | <small>MFG ENGR</small>                                | <small>GENERAL FABRICATION NOTES: (UNLESS OTHERWISE NOTED)</small><br>1. REMOVE ALL BURRS AND BREAK SHARP EDGES.<br>2. DIMENSION(S) APPLY AFTER FINISH.<br>3. ALL BENDS TO BE 90°.<br>4. $\sqrt{\hspace{1cm}}$ MAX. MACHINE FINISH. |                            | <small>SHEET NUMBER</small><br>1 OF 1     |                      | <small>SIZE</small><br>B                      |
| <small>DO NOT SCALE DRAWING</small>  | <small>RELEASED BY:</small>                            | <small>GENERAL ASSEMBLY NOTES: (UNLESS OTHERWISE NOTED)</small><br>1. ASSEMBLE AS PER WORKMANSHIP REQUIREMENTS OF IPC-A-610, CLASS 2  |                            | <small>DRAWING NUMBER</small><br>002-0116 |                      | <small>REV</small><br>1                       |