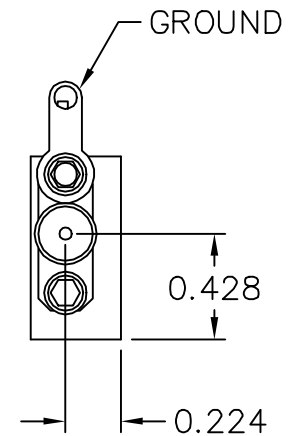
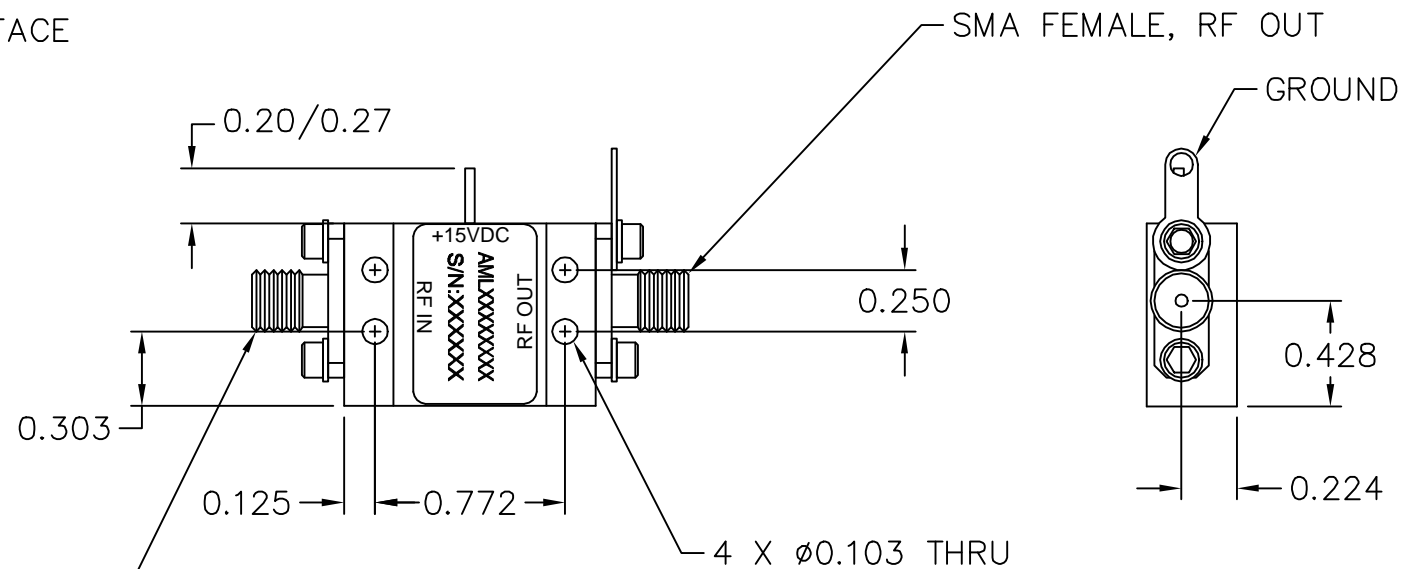
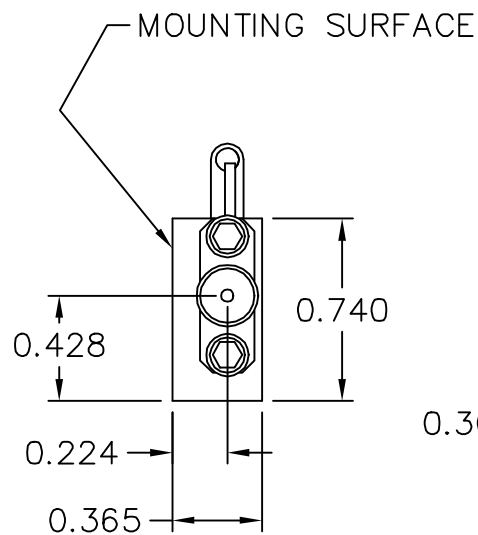
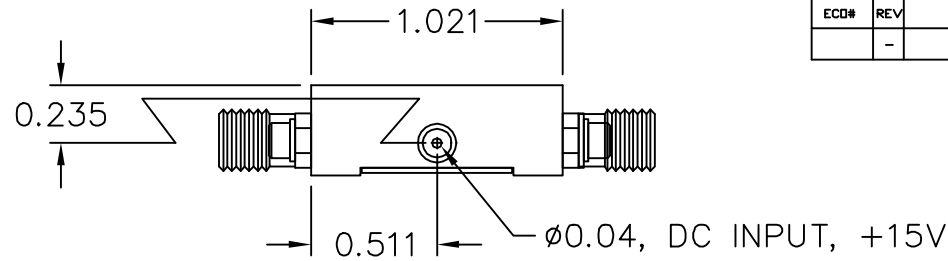



REVISIONS				
ECO#	REV	DESCRIPTION	DATE	APPROVED
	-	PRODUCTION RELEASE	7/31/01	SL



NOTES:

1. MARK LABEL (003-0231) AS SHOWN. MARK SERIAL NUMBER, DATE CODE AND MODEL NUMBER AS PER TRAVELER.

<small>UNLESS OTHERWISE SPECIFIED DIMENSIONS ARE IN INCHES TOLERANCES ARE: DECIMALS ANGLES .XX ± 0.01 ± 5° .XXX ± 0.05</small>		<small>THIRD ANGLE PROJECTION</small>	DRAWN BY SH CHECK BY SH DESIGNED BY SH APPROVED _____ DATE _____ ENGR _____ ENGR _____ MFG ENGR _____ QA _____ RELEASED BY: _____	TITLE: OUTLINE, CATALOG, (K2) SCALE: 2X DATE: 7/31/01 <small>GENERAL FABRICATION NOTES: (UNLESS OTHERWISE NOTED) 1. REMOVE ALL BURRS AND BREAK SHARP EDGES. 2. DIMENSION(S) APPLY AFTER FINISH. 3. ALL BENDS TO BE 90°. 4. $\sqrt{\text{V}}$ MAX. MACHINE FINISH.</small>	 CAMARILLO, CALIFORNIA, USA BOM NUMBER _____	
MATERIAL: ALUM ALLOY 6061 FINISH: ELECTROLESS NI MIL-C-26074C 0.0003/0.0005 THICK DO NOT SCALE DRAWING				<small>GENERAL ASSEMBLY NOTES: (UNLESS OTHERWISE NOTED) 1. ASSEMBLE AS PER WORKMANSHIP REQUIREMENTS OF IPC-A-610, CLASS 2</small>		
				SHEET NUMBER 1 OF 1 DRAWING NUMBER 002-0129	SIZE B REV -	