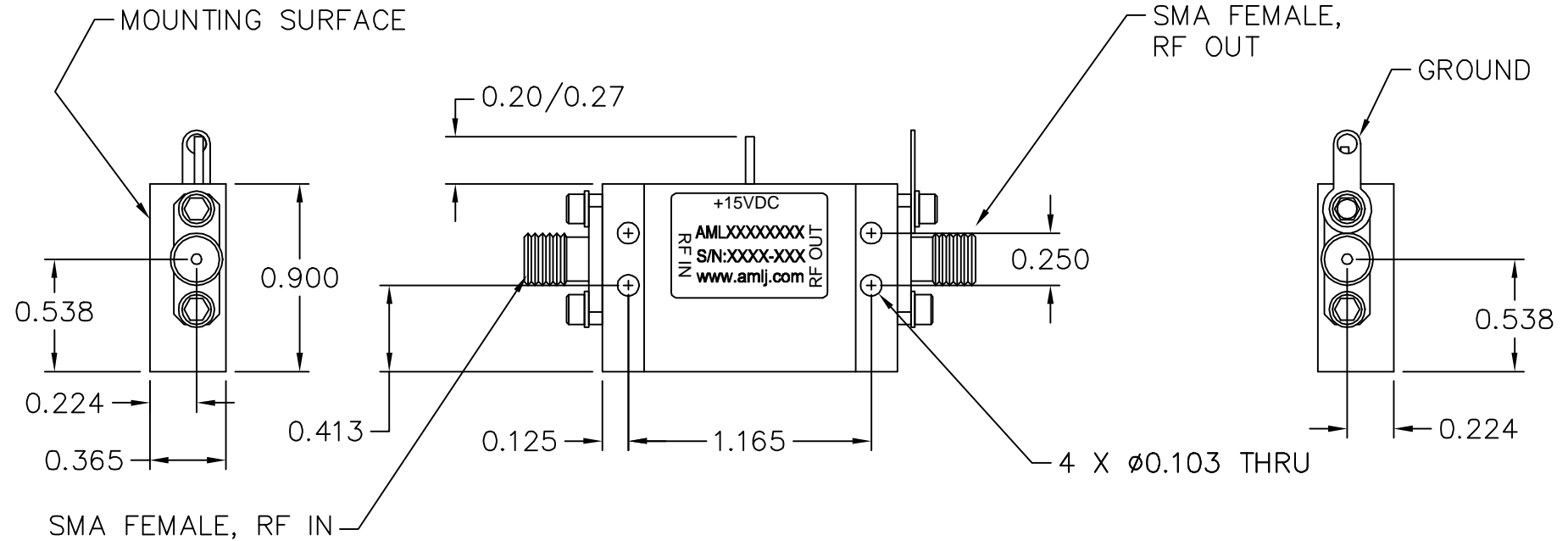
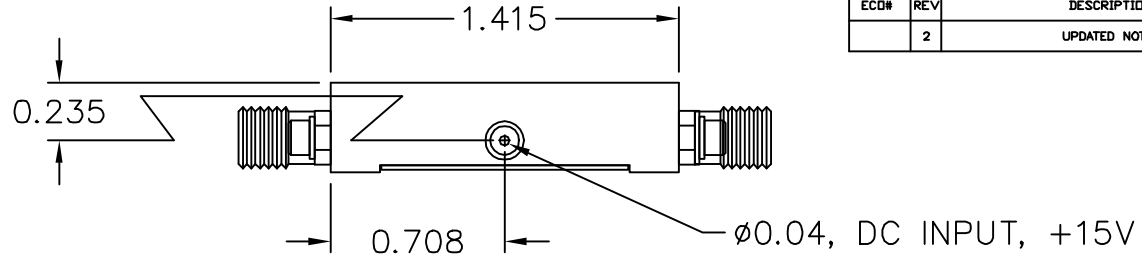


REVISIONS				
ECD#	REV	DESCRIPTION	DATE	APPROVED
	2	UPDATED NOTES	8/30/01	SL



NOTES:  
 1. MARK LABEL (003-0231) AS SHOWN. MARK SERIAL NUMBER, DATE CODE AND MODEL NUMBER AS PER TRAVELER.

<small>UNLESS OTHERWISE SPECIFIED DIMENSIONS ARE IN INCHES TOLERANCES ARE:</small> <small>DECIMALS .XX ± 0.01 ANGLES ± 5°</small> <small>.XXX ± .005</small>  <small>THIRD ANGLE PROJECTION</small>	<small>DRAWN BY</small> TA <small>CHECK BY</small> SH <small>DESIGNED BY</small> SH	<small>TITLE:</small> OUTLINE CATALOG (L2)	 <small>CAMARILLO, CALIFORNIA, USA</small>								
	<small>APPROVED</small> _____ <small>DATE</small> _____ <small>ENGR</small> _____ <small>ENGR</small> _____			<small>SCALE:</small> 2X <small>DATE:</small> 10/9/00							
<small>MATERIAL:</small> ALUM ALLOY 6061	<small>FINISH:</small> ELECTROLESS NI MIL-C-26074C 0.0003/0.0005 THICK	<small>GENERAL FABRICATION NOTES: (UNLESS OTHERWISE NOTED)</small> 1. REMOVE ALL BURRS AND BREAK SHARP EDGES. 2. DIMENSIONS APPLY AFTER FINISH. 3. ALL BENDS TO BE 90°. 4.  MAX. MACHINE FINISH.	<small>BOM NUMBER</small> _____								
<small>DO NOT SCALE DRAWING</small>	<small>RELEASED BY:</small> _____	<small>GENERAL ASSEMBLY NOTES: (UNLESS OTHERWISE NOTED)</small> 1. ASSEMBLE AS PER WORKMANSHIP REQUIREMENTS OF IPC-A-610, CLASS 2	<table border="1"> <tr> <td><small>SHEET NUMBER</small></td> <td><small>SIZE</small></td> </tr> <tr> <td>1 OF 1</td> <td>B</td> </tr> <tr> <td><small>DRAWING NUMBER</small></td> <td><small>REV</small></td> </tr> <tr> <td>002-0083</td> <td>2</td> </tr> </table>	<small>SHEET NUMBER</small>	<small>SIZE</small>	1 OF 1	B	<small>DRAWING NUMBER</small>	<small>REV</small>	002-0083	2
<small>SHEET NUMBER</small>	<small>SIZE</small>										
1 OF 1	B										
<small>DRAWING NUMBER</small>	<small>REV</small>										
002-0083	2										