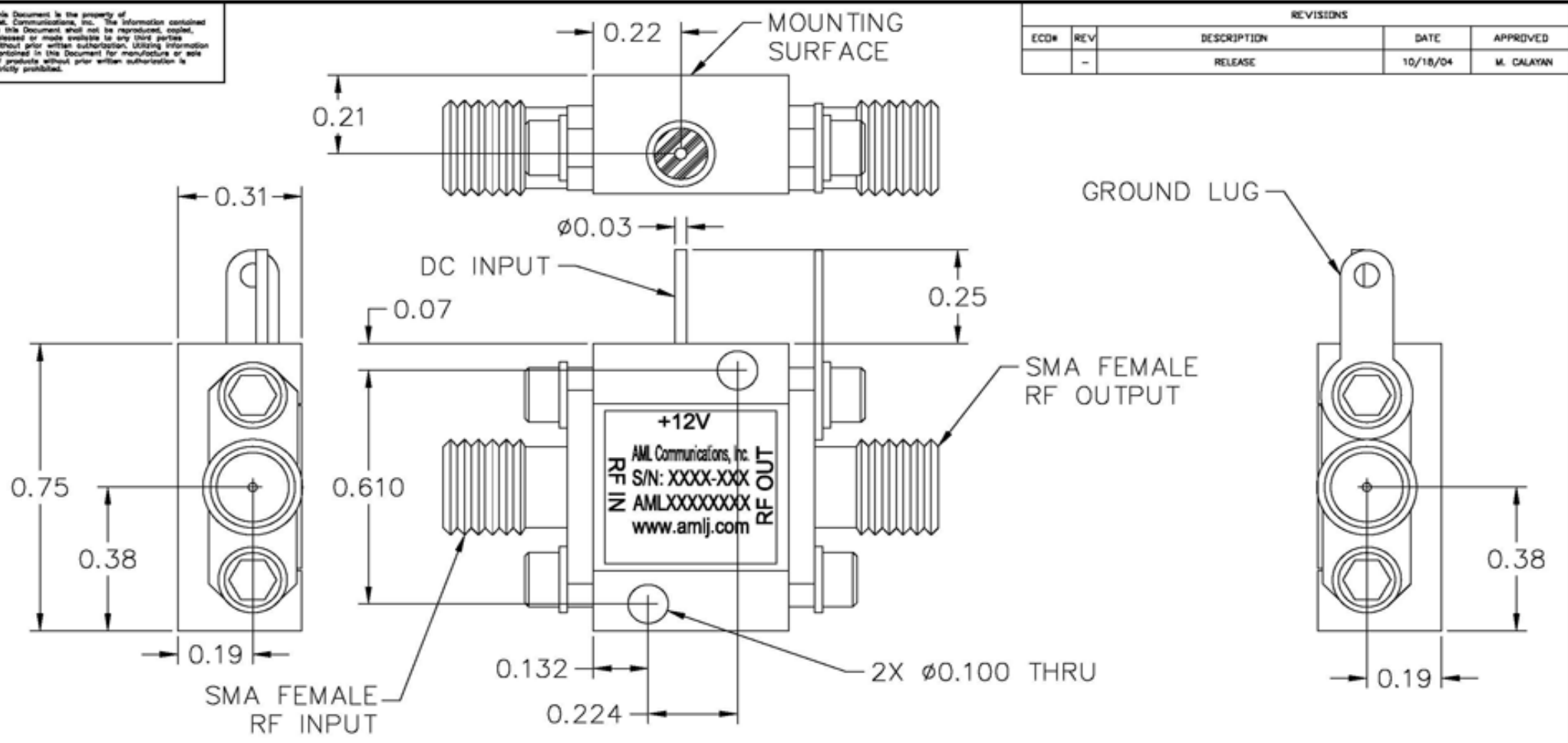


This Document is the property of AML Communications, Inc. The information contained in this Document shall not be reproduced, copied, released or made available to any third parties without prior written authorization. Utilizing information contained in this Document for manufacture or sale of products without prior written authorization is strictly prohibited.

REVISIONS				
ECD#	REV	DESCRIPTION	DATE	APPROVED
	-	RELEASE	10/18/04	M. CALAYAN



NOTES:

1. MARK LABEL (003-0231) AS SHOWN. MARK SERIAL NUMBER AND DATE CODE AS PER TRAVELER. TRIM LABEL TO FIT.

<small>UNLESS OTHERWISE SPECIFIED DIMENSIONS ARE IN INCHES TOLERANCES ARE: DECIMALS ANGLES XX ± 0.00 0° XXX ± 0.00 0°</small>		DRAWN BY SH CHECK BY SH DESIGNED BY SH APPROVED DATE ENGR Glenn Nakao 10/18/04 ENGR MFG ENGR QA Greg Isler 10/18/04 RELEASED BY Mike Calayan 10/18/04	TITLE: OUTLINE CATALOG (M1)	CAHARILLO, CALIFORNIA, USA BOM NUMBER SHEET NUMBER 1 OF 1 SIZE B DRAWING NUMBER 002-0455 REV -
		MATERIAL: KOVAR	SCALE: NTS DATE: 9/21/04	
		FINISH: NICKEL PLATE PER MIL-C-26074	GENERAL FABRICATION NOTES: (UNLESS OTHERWISE NOTED) 1. REMOVE ALL BURRS AND BREAK SHARP EDGES. 2. DIMENSION(S) APPLY AFTER FINISH. 3. ALL BENDS TO BE 90°. 4. \sqrt{R} MAX. MACHINE FINISH.	
		DO NOT SCALE DRAWING		