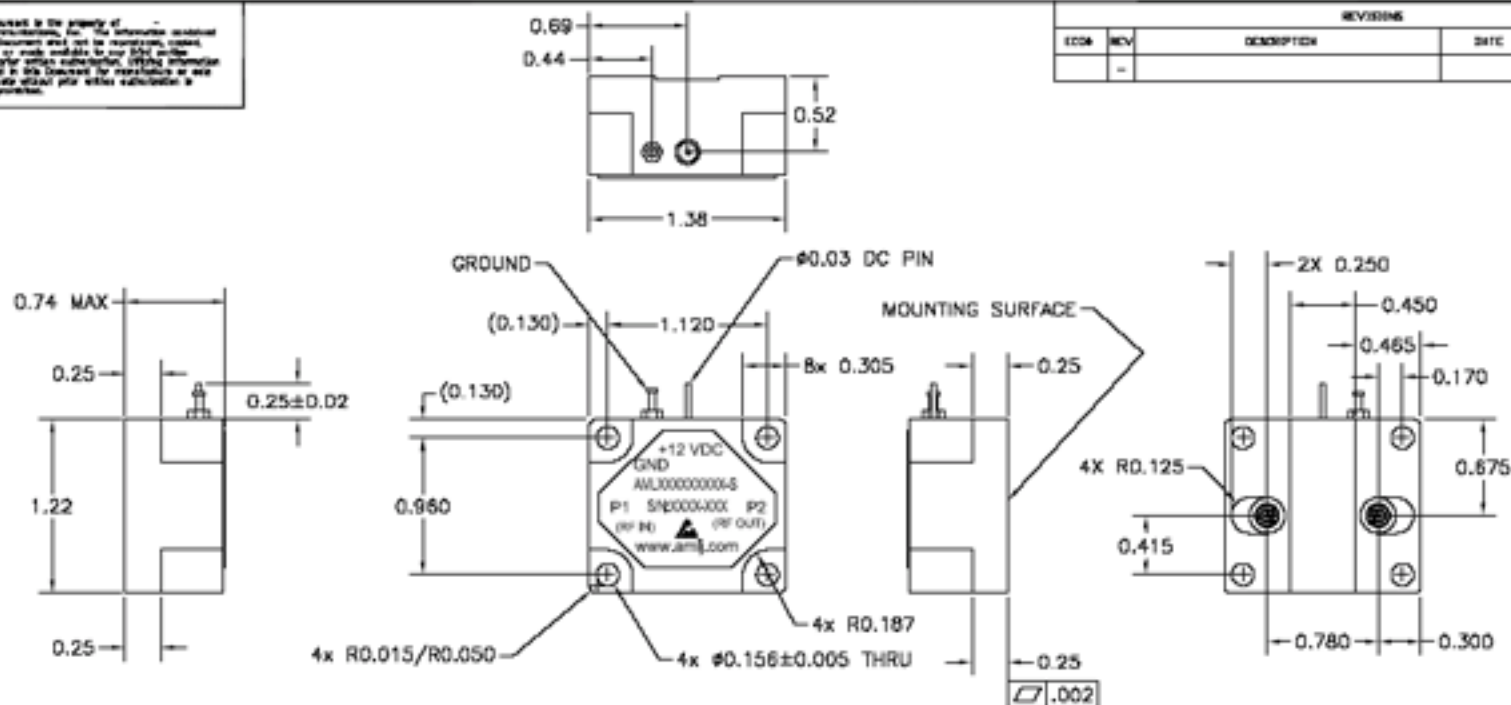


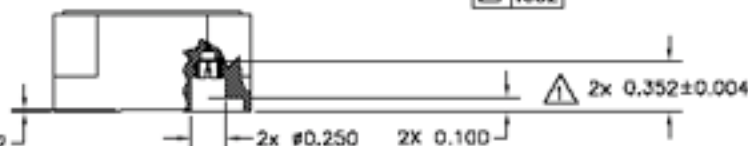
THIS DRAWING IS THE PROPERTY OF
 AML CORPORATION, INC. THE INFORMATION CONTAINED
 HEREIN IS UNCLASSIFIED AND IS BEING RELEASED
 WITHOUT LIMITATION TO THE PUBLIC. ANY
 REPRODUCTION OF THIS DOCUMENT FOR
 PROPRIETARY OR OTHER UNLAWFUL PURPOSES IS
 STRICTLY PROHIBITED.

REVISIONS				
EDA	REV	DESCRIPTION	DATE	APPROVED
	-			



NOTES:

- 0.352 DIM IS FROM MOUNTING SURFACE OF AMPLIFIER TO REFERENCE PLANE OF SMP SHROUD.
 0.012 ± 0.002
- PAINT GREY PER MIL-PRF-22750. PAINT IS TO BE APPLIED TO THE TOP SURFACE, COVER AND WELD BEAD ONLY.
- MARK AS SHOWN IN BLACK PER MIL-STD-130. MARK DATE CODE AND SERIAL NUMBER AS DEFINED BY TRAVELER.



DESIGN SPECIFICATIONS ENGINEER AND DATE DESIGNED BY DATE CHECKED BY DATE APPROVED BY DATE MATERIAL ALUM ALLOY 6061-T3, AW2 4247 FINISH MODEL PLATE PER MIL-C-26274 ESR-432 J4N DO NOT SCALE DRAWING	 100 MIL RELIATION
-----------------------------------------------------------------------------------------------------------------------------------------------------------------------------------------------------------------------------------------------------	-----------------------

DESIGNED BY	CHECK BY
APPROVED BY	DATE
DATE	
DATE	
REV DATE	
DA	
RELEASED BY	

TITLE	OUTLINE CATALOG (SMP2)
SCALE	NTS
DATE	
GENERAL FABRICATION NOTES: CALLS OVERSHE SPECIFIED	
1. REMOVE ALL BURRS AND SHARP EDGES AND MARK	
2. UNFINISHED SURFACES APPLY AFTER FINISH	
3. MAX. WELDING FINISH	
4. INTERPRET DIMENSIONS PER AIR FORCE 174.30-1004	

 AML CORPORATION CARROLLTON, TEXAS, USA	
SHEET NUMBER	SIZE
1 OF 1	B
DRAWING NUMBER	REV
	-