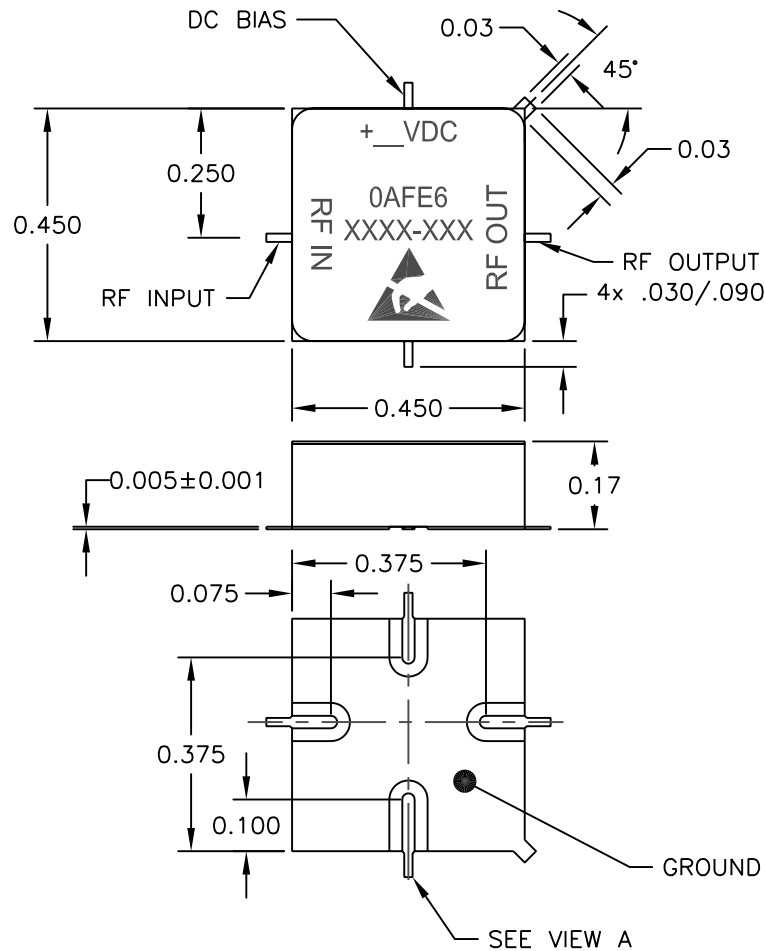
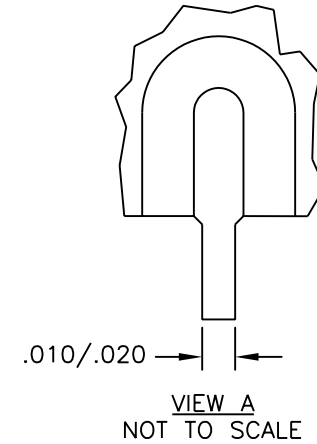


This Document is the property of AML Communications, Inc. The information contained in this Document shall not be reproduced, copied, released or made available to any third parties without prior written authorization. Utilizing information contained in this Document for manufacture or sale of products without prior written authorization is strictly prohibited.

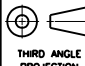



REVISIONS				
ECO#	REV	DESCRIPTION	DATE	APPROVED
ECO#	REV	DESCRIPTION	DATE	NAME



NOTES:

1. MARK CAGE CODE, PART NUMBER, PIN NOMENCLATURE, SERIAL NUMBER AND DATE CODE PER TRAVELER USING ENTHONE 50-700R BLACK INK (OR EQUIV).

<small>UNLESS OTHERWISE SPECIFIED DIMENSIONS ARE IN INCHES TOLERANCES ARE: DECIMALS .XX ± 0.01 .XXX ± 0.005 ANGLES ± 2°</small>	 THIRD ANGLE PROJECTION	DRAWN BY ABC	CHECK BY XYZ	TITLE: THE DRAWING TITLE		 CAMARILLO, CALIFORNIA, USA	
		DESIGNED BY INITIALS					
		APPROVED	DATE	SCALE: SCALE	DATE: DATE	BOM NUMBER BOM # :	
		ENGR Diane Pham 11/08/05		<small>GENERAL FABRICATION NOTES: (UNLESS OTHERWISE SPECIFIED) 1. REMOVE ALL BURRS AND BREAK SHARP EDGES .005 MAX. 2. DIMENSION(S) APPLY AFTER FINISH. 3. 32 MAX. MACHINE FINISH. 4. INTERPRET DRAWING PER ANSI/ASME Y14.5M-1994</small>		SHEET NUMBER 1-OF-1	SIZE B
MATERIAL #1 MATERIAL #2 MATERIAL #3 MATERIAL		ENGR				DRAWING NUMBER DWG #	REV
FINISH #1 FINISH #2 FINISH #3 FINISH		MFG ENGR Della Virto 11/09/05					
		QA Thomas Heckler 11/09/05					
DO NOT SCALE DRAWING		RELEASED BY Mike Calayan 11/09/05					