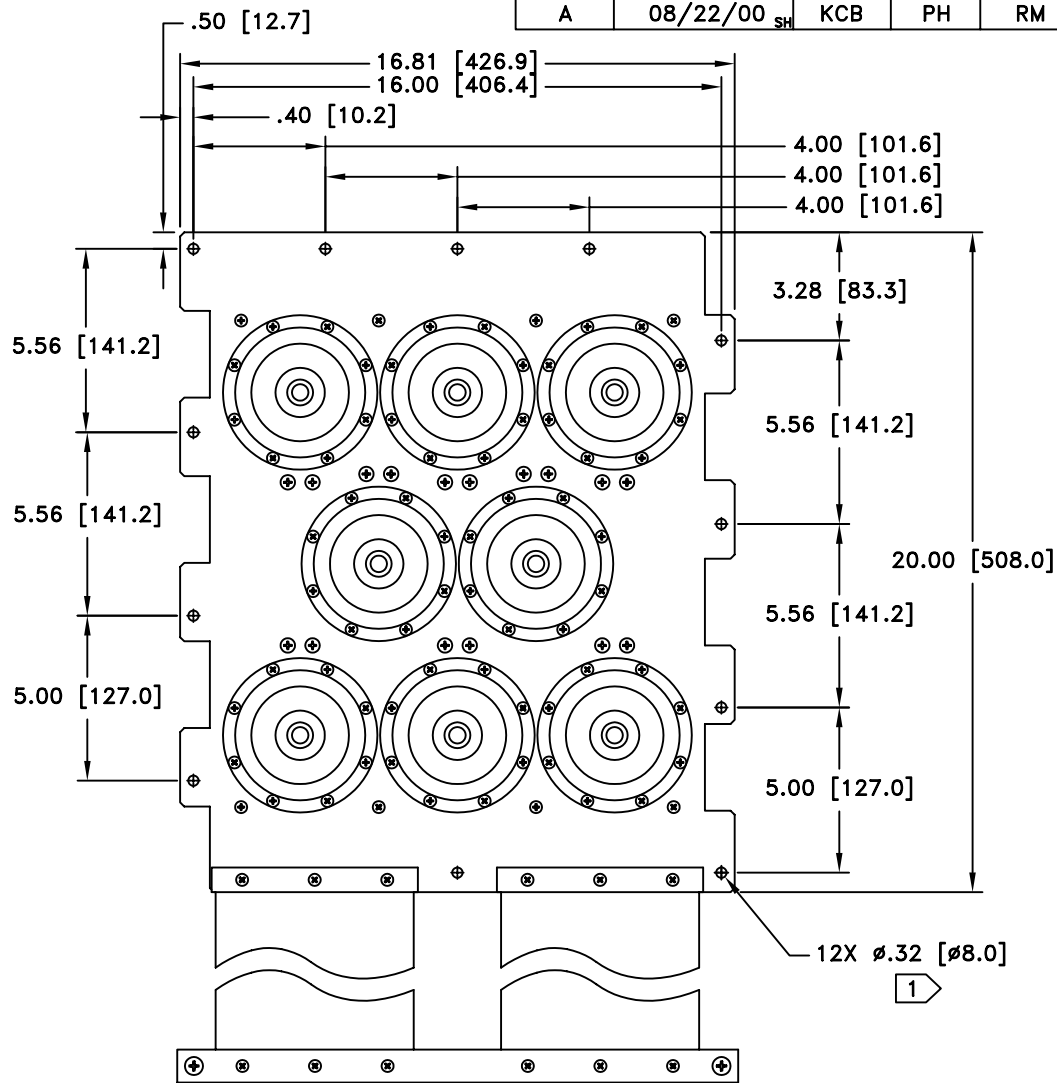
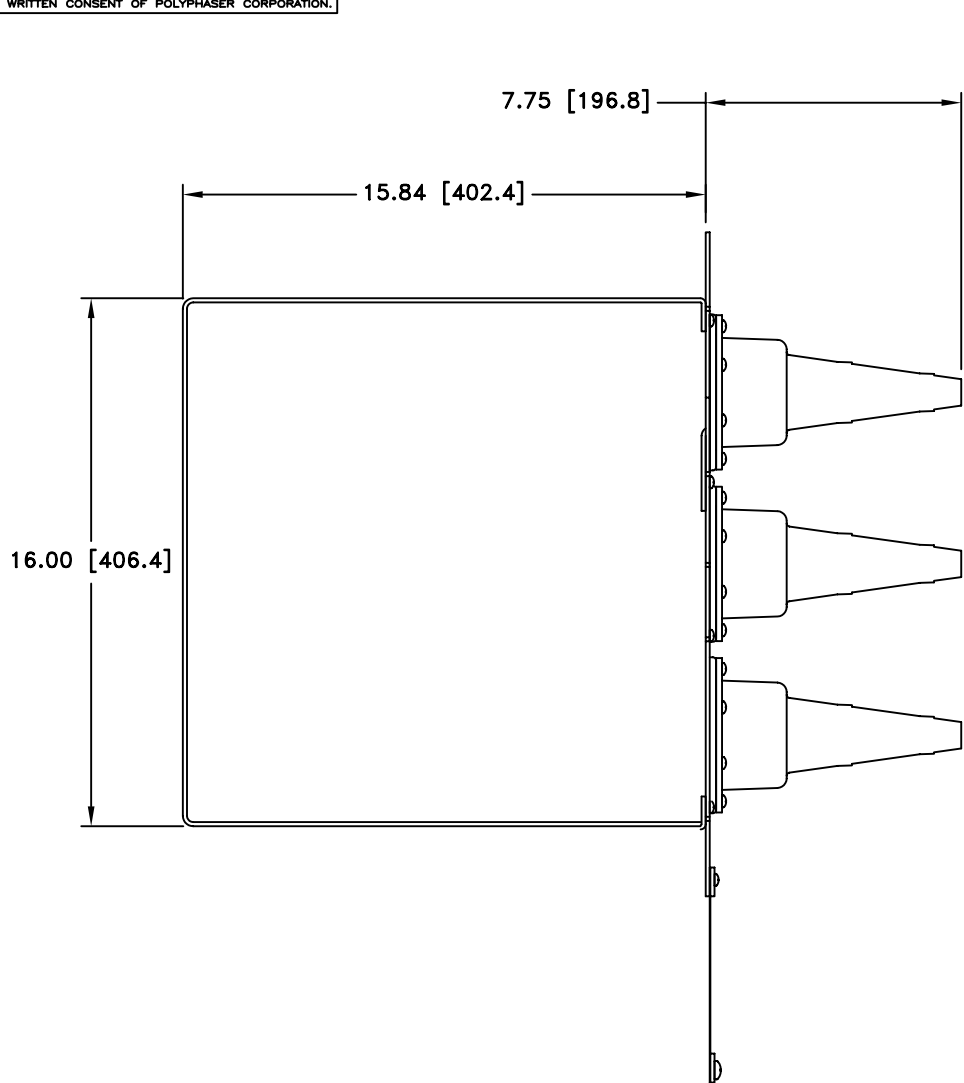


ALL DESIGN, OPERATIVE AND PROCESS DATA PERTAINING TO THE ARTICLE SHOWN ON THIS SHEET IS THE PROPERTY OF POLYPHASER CORPORATION. THE INFORMATION IS NOT TO BE COPIED, REPRODUCED, REVEALED TO OR APPROPRIATED BY OTHERS WITHOUT THE EXPRESS WRITTEN CONSENT OF POLYPHASER CORPORATION.

REVISIONS				
REV LTR	DATE	ENG	MKTG	Q.A.
A	08/22/00 _{SH}	KCB	PH	RM



SPECIFICATIONS
MATERIAL: C110 HALF HARD COPPER
HARDWARE: STAINLESS STEEL AND BRASS
BOOTS: UV & WEATHER RESISTANT EPDM RUBBER
COAX DIAMETER: UP TO 3.125" DIAMETER

1 MATCH DRILL MOUNTING HOLES.

CUSTOMER APPROVAL: _____ DATE: _____

ALL DIMENSIONS SHOWN ABOVE ARE FOR REFERENCE ONLY.

DRAFTER J. CALLISTER	DATE 05/27/99	PolyPhaser [®] P.O. BOX 9000, MINDEN, NV 89423-9000 (775) 782-2511 FAX (775) 782-4476 DWG NO/PART NO/DESCRIPTION 8PB-M CUSTOMER PRINT		
MECH ENGINEER O. AKDAG	DATE 12/08/99			
ELEC ENGINEER K. BARTEL	DATE 12/08/99			
MARKETING T. EATON	DATE 12/09/99			
QUALITY DEPT R. MATHEUS	DATE 12/08/99			
CAGE CODE 61114	FILE NAME -C1	SCALE 1/6	SHEET 1 OF 1	