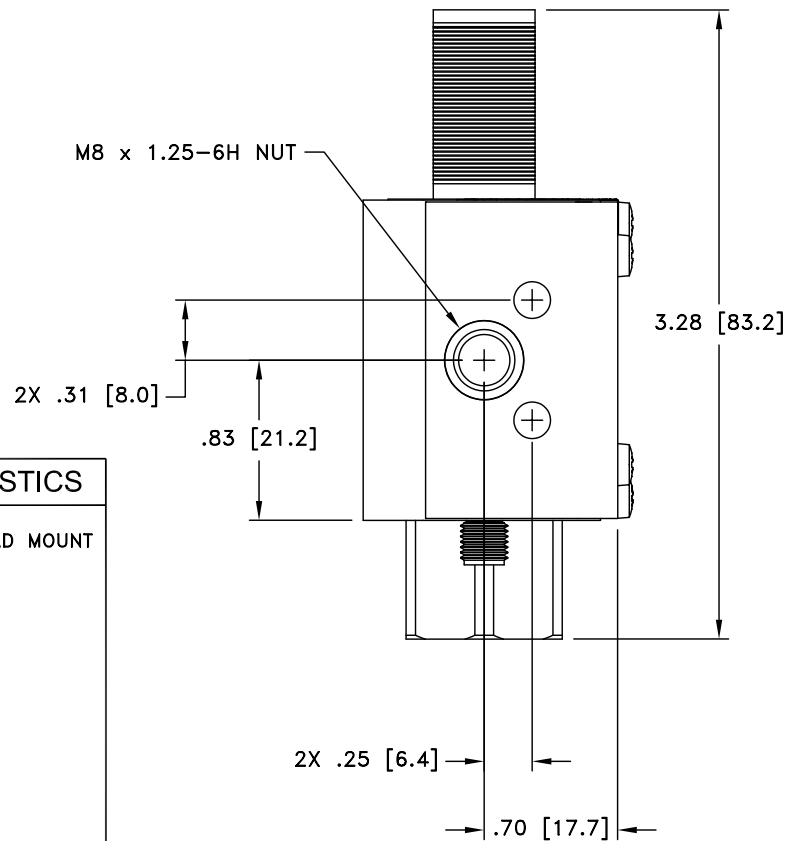


ALL DESIGN, OPERATIVE AND PROCESS DATA PERTAINING TO THE ARTICLE SHOWN ON THIS SHEET IS THE PROPERTY OF POLYPHASER CORPORATION. THE INFORMATION IS NOT TO BE COPIED, REPRODUCED, REVEALED TO OR APPROPRIATED BY OTHERS WITHOUT THE EXPRESS WRITTEN CONSENT OF POLYPHASER CORPORATION.

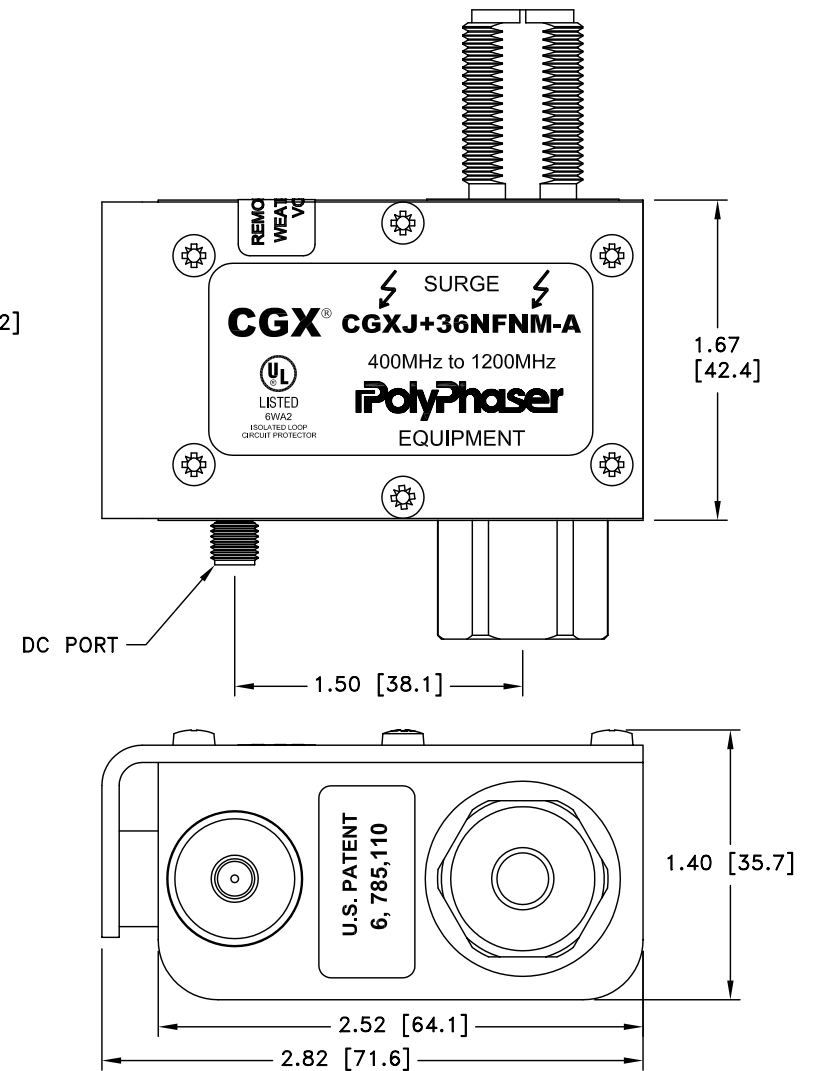
REVISIONS

REV LTR	DATE	ENG	MKTG	Q.A.
C	12/07/04 RS	KCB	SD	LJ




MAXIMUM CHARACTERISTICS

APPLICATION:
WEATHERIZED, FLANGE OR BULKHEAD MOUNT
FREQUENCY RANGE:
400MHz TO 1200MHz
VSWR:
≤1.1:1 OVER FREQUENCY RANGE
INSERTION LOSS:
≤0.1dB OVER FREQUENCY RANGE
POWER:
300W RMS AVERAGE
TURN ON:
+40Vdc
TURN ON TIME:
4ns FOR 2kV/ns
SURGE:
20kA IEC 61000-4-5 8/20μs WAVEFORM
THROUGHPUT ENERGY:
<25μJ FOR 3kA, 8/20μs WAVEFORM
USER VOLTAGE:
+36Vdc MAX
USAGE CURRENT:
≤4.0A CONTINUOUS
VIBRATION:
1G AT 5Hz TO 100Hz
RELATIVE HUMIDITY:
TO 95%
ENVIRONMENTAL:
MEETS IEC 60529 IP67
MEETS BELLCORE #TA-NWT-000487
PROCEDURE 4.11, WIND DRIVEN (120MPH)
RAIN INTRUSION TEST.
TEMPERATURE:
-50°C TO +85°C STORAGE/OPERATING+65°C



CUSTOMER APPROVAL: _____ DATE: _____

ALL DIMENSIONS SHOWN ABOVE ARE FOR REFERENCE ONLY.

DRAFTER I. BENNETT	DATE 01/27/03	<div> P.O. BOX 9000 MINDEN, NV 89423 TEL: 775-782-2511 FAX: 775-782-4476 DWG NO/PART NO/DESCRIPTION CGXJ+36NFM-A CUSTOMER PRINT</div>		
MECH ENGINEER R. DUNNING	DATE 01/28/03			
ELEC ENGINEER K. BARTEL	DATE 01/27/03			
MARKETING S. DOTTER	DATE 01/27/03			
QUALITY DEPT L. JACQUES	DATE 01/27/03			
CAGE CODE 61114	FILE NAME -C1	SCALE 1/1	SHEET 1 OF 1	