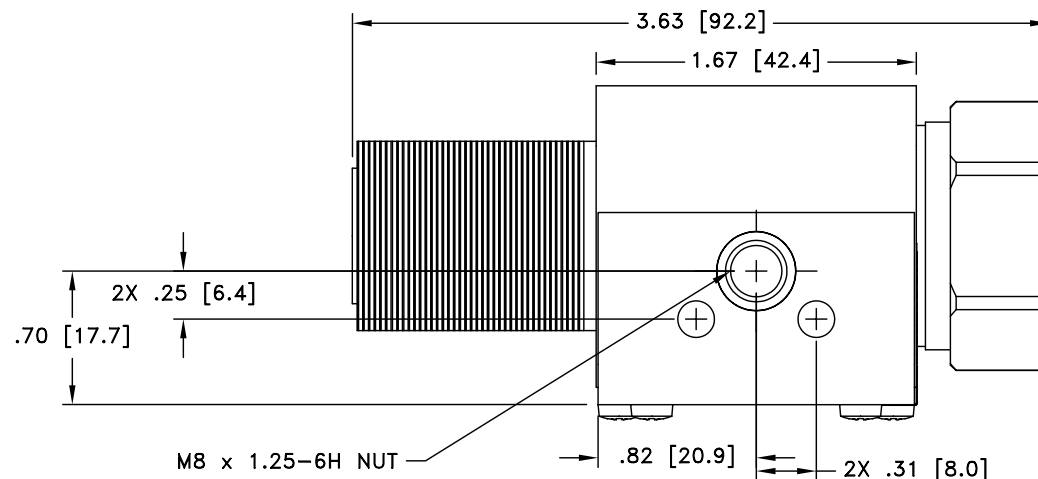


ALL DESIGN, OPERATIVE AND PROCESS DATA PERTAINING TO THE ARTICLE SHOWN ON THIS SHEET IS THE PROPERTY OF POLYPHASE CORPORATION. THE INFORMATION IS NOT TO BE COPIED, REPRODUCED, REVEALED TO OR APPROPRIATED BY OTHERS WITHOUT THE EXPRESS WRITTEN CONSENT OF POLYPHASE CORPORATION.

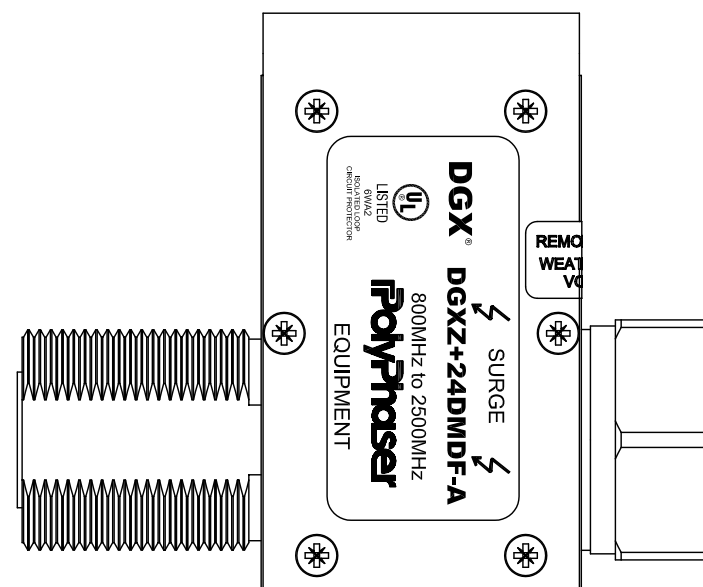
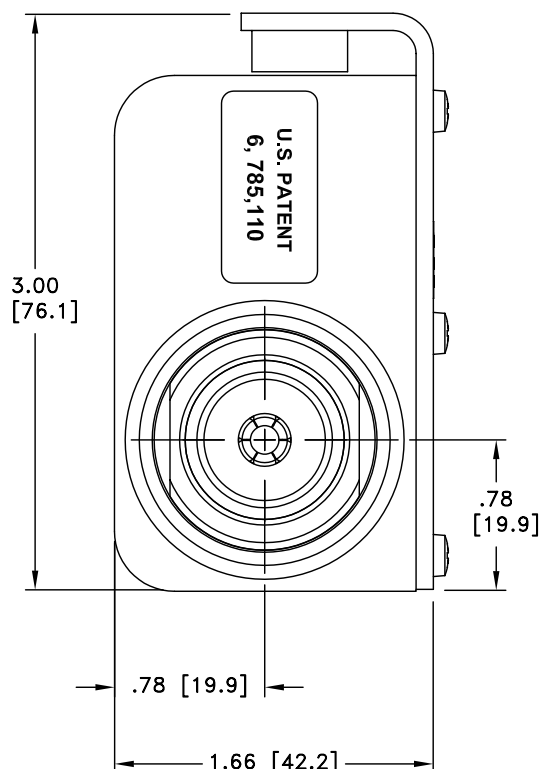
REVISIONS

REV LTR	DATE	ENG	MKTG	Q.A.
E	12/07/04 SH	KCB	SD	LJ




MAXIMUM CHARACTERISTICS

APPLICATION:
WEATHERIZED, FLANGE OR BULKHEAD MOUNT
FREQUENCY RANGE:
800MHz TO 2500MHz
VSWR:
≤1.1:1 OVER FREQUENCY RANGE
INSERTION LOSS:
≤0.1dB OVER FREQUENCY RANGE
POWER:
6.25W RMS AVERAGE
TURN ON:
+26.5Vdc
TURN ON TIME:
4ns FOR 2kV/ns
MAX. SURGE:
20kA IEC 61000-4-5 8/20μs WAVEFORM
THROUGHPUT ENERGY:
≤1mJ FOR 3kA, 8/20μs WAVEFORM
USER VOLTAGE:
+24Vdc MAX
USAGE CURRENT:
≤4.0A CONTINUOUS
RELATIVE HUMIDITY:
TO 95%
ENVIRONMENTAL:
MEETS IEC 60529 IP67
MEETS BELLCORE #TA-NWT-000487
PROCEDURE 4.11, WIND DRIVEN (120MPH)
RAIN INTRUSION TEST.
TEMPERATURE:
-50°C TO +85°C STORAGE/OPERATING



CUSTOMER APPROVAL: _____ DATE: _____

ALL DIMENSIONS SHOWN ABOVE ARE FOR REFERENCE ONLY.

DRAFTER S. HALL	DATE 06/27/02	 P.O. BOX 9000 MINDEN, NV 89423 TEL: 775-782-2511 FAX: 775-782-4476 DWG NO/PART NO/DESCRIPTION DGXZ+24DMDF-A CUSTOMER PRINT		
MECH ENGINEER R. DUNNING	DATE 07/08/02			
ELEC ENGINEER K. BARTEL	DATE 07/03/02			
MARKETING P. HEEREN	DATE 07/08/02			
QUALITY DEPT L. JACQUES	DATE 07/08/02	CAGE CODE 61114	FILE NAME -C1	SCALE 1/1
		SHEET 1 OF 1		