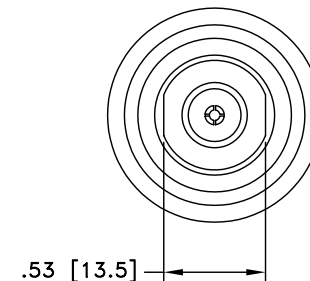
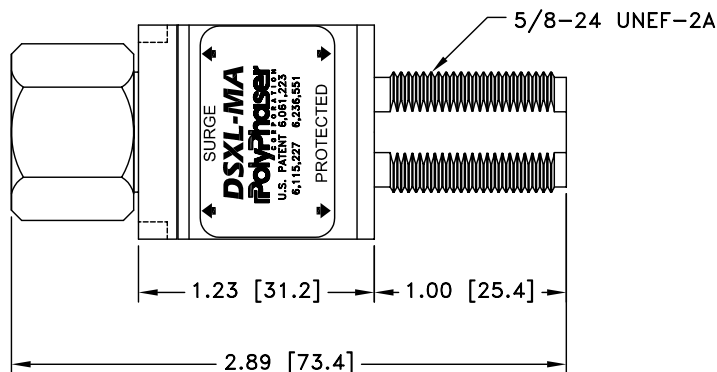
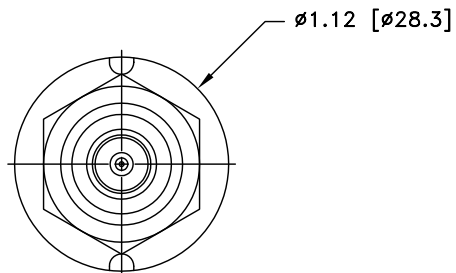


ALL DESIGN, OPERATIVE AND PROCESS DATA PERTAINING TO THE ARTICLE SHOWN ON THIS SHEET IS THE PROPERTY OF POLYPHASER CORPORATION. THE INFORMATION IS NOT TO BE COPIED, REPRODUCED, REVEALED TO OR APPROPRIATED BY OTHERS WITHOUT THE EXPRESS WRITTEN CONSENT OF POLYPHASER CORPORATION.

REVISIONS

REV LTR	DATE	ENG	MKTG	Q.A.
A	07/28/04 _{RS}	JJ	SD	LJ



MAXIMUM CHARACTERISTICS

APPLICATION:

BULKHEAD MOUNT
WEATHERPROOF WHEN INSTALLED

SURGE / FREQUENCY / VSWR:

IEC 61000-4-5 8/20μs WAVEFORM
20kA @ 800MHz TO 2.0GHz @ ≤1.1:1 VSWR
18kA @ 800MHz TO 2.3GHz @ ≤1.1:1 VSWR
18kA @ 700MHz TO 2.7GHz @ ≤1.2:1 VSWR

INSERTION LOSS:

≤0.1dB

CONTINUOUS POWER:

500W @ 920MHz
(750W @ 50°C)

LET THROUGH VOLTAGE:

≤±3 VOLTS FOR 3kA @ 8/20μs WAVEFORM

THROUGHPUT ENERGY:

≤0.5μJ FOR 3kA @ 8/20μs WAVEFORM

TEMPERATURE:

-40°C TO +85°C STORAGE/OPERATING

VIBRATION:


1G @ 5Hz TO 100Hz

ENVIRONMENTAL:

MEETS IEC 60529 IP65
MEETS BELLCORE #TA-NWT-000487
PROCEDURE 4.11, WIND DRIVEN (120MPH)
RAIN INTRUSION TEST

CUSTOMER APPROVAL: _____ DATE: _____

ALL DIMENSIONS SHOWN ABOVE ARE FOR REFERENCE ONLY.

DRAFTER R. DUNNING	DATE 09/20/02	 P.O. BOX 9000 MINDEN, NV 89423 TEL: 775-782-2511 FAX: 775-782-4476 DWG NO/PART NO/DESCRIPTION DSXL-MA CUSTOMER PRINT	
MECH ENGINEER R. DUNNING	DATE 10/23/02		
ELEC ENGINEER J. JONES	DATE 10/23/02		
MARKETING S. DOTTER	DATE 10/24/02		
QUALITY DEPT L. JACQUES	DATE 10/23/02		
CAGE CODE 61114	FILE NAME -C1	SCALE 1/1	SHEET 1 OF 1