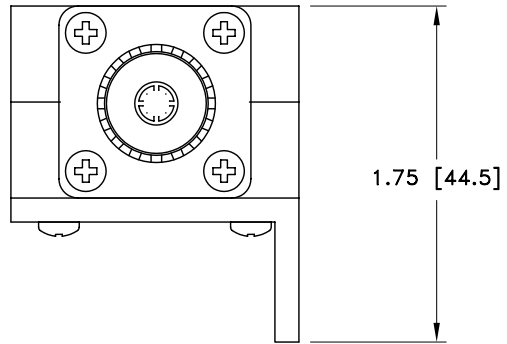
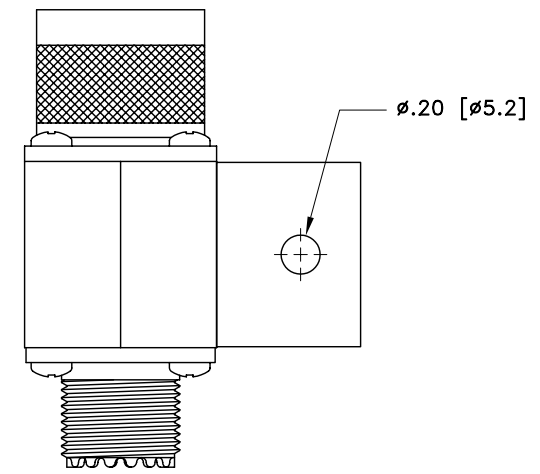
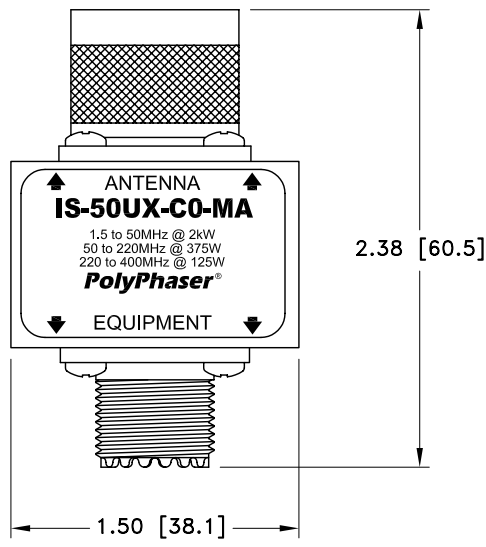
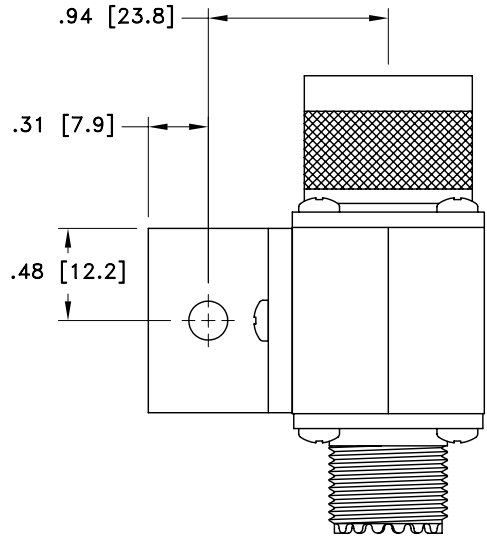


ALL DESIGN, OPERATIVE AND PROCESS DATA PERTAINING TO THE ARTICLE SHOWN ON THIS SHEET IS THE PROPERTY OF POLYPHASER CORPORATION. THE INFORMATION IS NOT TO BE COPIED, REPRODUCED, REVEALED TO OR APPROPRIATED BY OTHERS WITHOUT THE EXPRESS WRITTEN CONSENT OF POLYPHASER CORPORATION.

REVISIONS				
REV LTR	DATE	ENG	MKTG	Q.A.
A	01/16/01 ^{SH}	KCB	PH	RM
B	05/02/01 ^{IB}	KCB	PH	RM



MAXIMUM CHARACTERISTICS

FREQUENCY RANGE:
1.5MHz TO 400MHz

SURGE:
50kA IEC 1000-4-5 8/20µs WAVEFORM 500JOULES

TURN ON:
600Vdc±20% 2.5ns FOR 2kV

VSWR:
≤1.2:1 @ 1.5MHz TO 400MHz

INSERTION LOSS:
<0.1dB OVER FREQUENCY RANGE

MAX POWER:
HF 2kW, VHF 375W, UHF 125W

THROUGHPUT ENERGY:
<10mJ (UHF CONNECTOR/SURFACE)

OPERATING TEMPERATURE:
+50°C

STORAGE TEMPERATURE:
-45°C TO +85°C

RELATIVE HUMIDITY:
90% AT 40°C

VIBRATION:
1G AT 5Hz TO 100Hz

CUSTOMER APPROVAL: _____ DATE: _____

ALL DIMENSIONS SHOWN ABOVE ARE FOR REFERENCE ONLY.

DRAFTER S.HALL	DATE 07/16/99	PolyPhaser® P.O. BOX 9000, MINDEN, NV 89423-9000 (775) 782-2511 FAX (775) 782-4476 DWG NO/PART NO/DESCRIPTION IS-50UX-C0-MA CUSTOMER PRINT			
MECH ENGINEER M. MATTSON	DATE 03/17/00				
ELEC ENGINEER K. BARTEL	DATE 03/20/00				
MARKETING R. JUCHEM	DATE 03/21/00				
QUALITY DEPT J. BERNARD	DATE 03/20/00	CAGE CODE 61114	FILE NAME -C1	SCALE 1/1	SHEET 1 OF 1