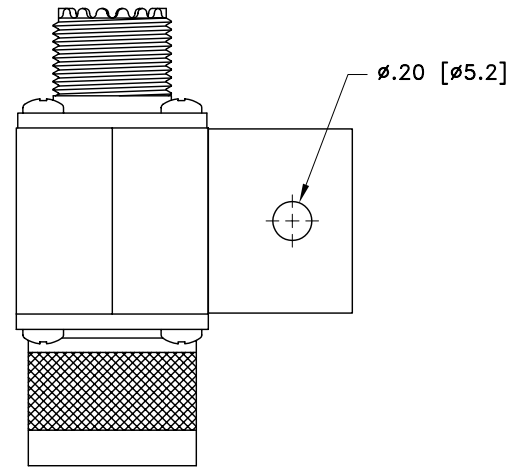
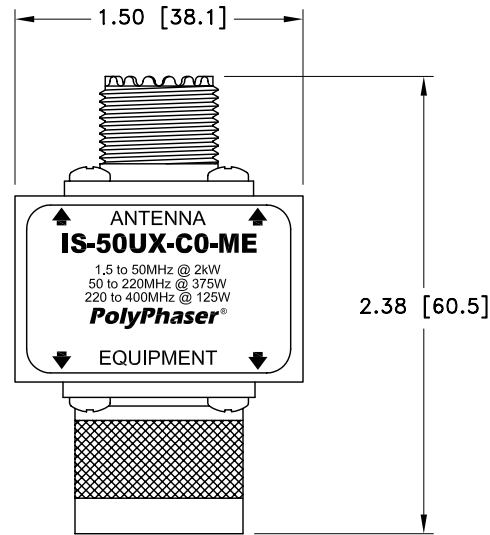
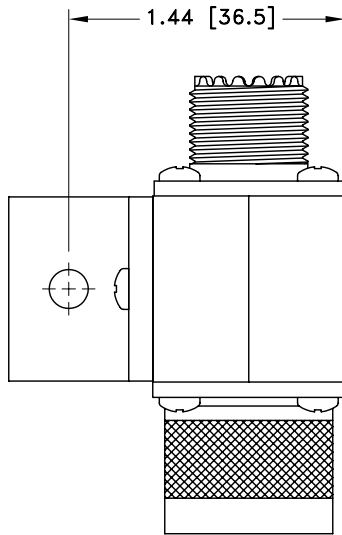


ALL DESIGN, OPERATIVE AND PROCESS DATA PERTAINING TO THE ARTICLE SHOWN ON THIS SHEET IS THE PROPERTY OF POLYPHASER CORPORATION. THE INFORMATION IS NOT TO BE COPIED, REPRODUCED, REVEALED TO OR APPROPRIATED BY OTHERS WITHOUT THE EXPRESS WRITTEN CONSENT OF POLYPHASER CORPORATION.

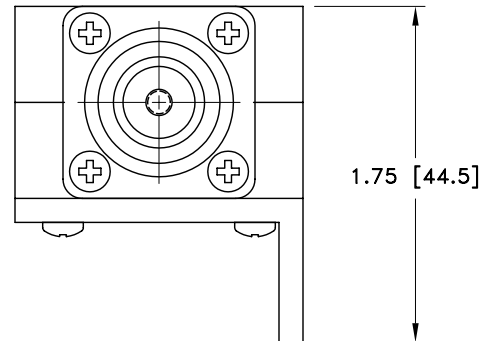
REVISIONS

REV LTR	DATE	ENG	MKTG	Q.A.
A	07/19/99 ^{SH}	M.M	R.J	J.B
B	01/16/01 ^{SH}	KCB	PH	RM
C	05/02/01 ^{IB}	RCD	PH	RM



MAXIMUM CHARACTERISTICS

APPLICATION:
 FLANGE MOUNT
 FREQUENCY RANGE:
 1.5MHz TO 400MHz
 SURGE:
 50kA IEC 1000-4-5 8/20μs WAVEFORM 500JOULES
 TURN ON:
 600Vdc±20% 2.5ns FOR 2kV/ns
 VSWR:
 ≤1.2:1 @ 1.5MHz TO 400MHz
 INSERTION LOSS:
 <0.1dB OVER FREQUENCY RANGE
 MAX POWER:
 HF 2kW, VHF 375W, UHF 125W
 THROUGHPUT ENERGY:
 <10mJ (UHF CONNECTOR/SURFACE)
 OPERATING TEMPERATURE:
 +50°C
 STORAGE TEMPERATURE:
 -45°C TO +85°C
 RELATIVE HUMIDITY:
 90% AT 40°C
 VIBRATION:
 1G AT 5Hz TO 100Hz



CUSTOMER APPROVAL: _____ DATE: _____

ALL DIMENSIONS SHOWN ABOVE ARE FOR REFERENCE ONLY.

DRAFTER J. CALLISTER	DATE 04/02/98	PolyPhaser® P.O. BOX 9000, MINDEN, NV 89423-9000 (775) 782-2511 FAX (775) 782-4476 IS-50UX-CO-ME CUSTOMER PRINT			
MECH ENGINEER O. AKDAG	DATE 04/03/98				
ELEC ENGINEER K. BARTEL	DATE 04/03/98				
MARKETING - - - -	DATE - - - -				
QUALITY DEPT R. MATHEUS	DATE 04/03/98	CAGE CODE 61114	FILE NAME -C1	SCALE 1/1	SHEET 1 OF 1