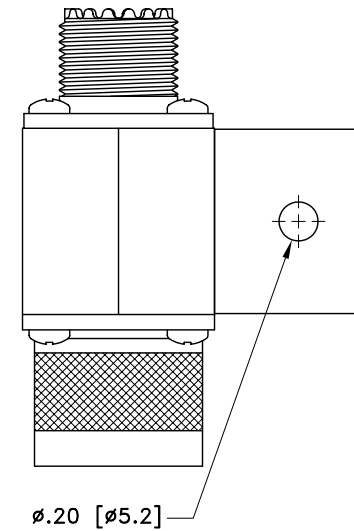
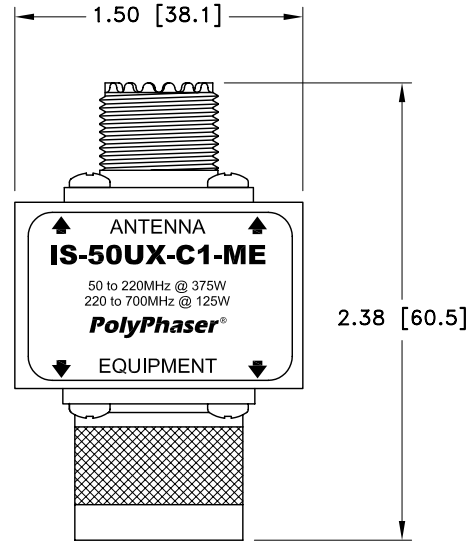
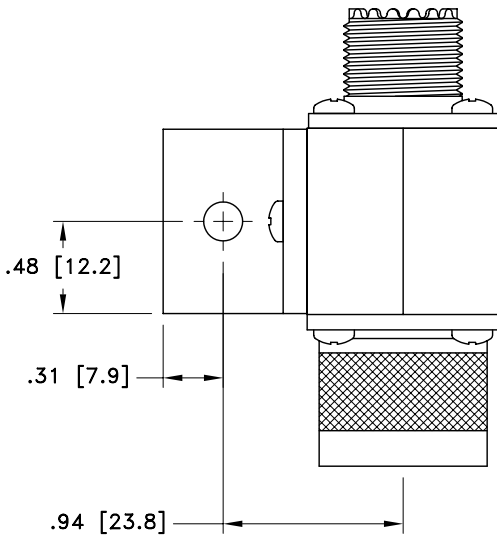


ALL DESIGN, OPERATIVE AND PROCESS DATA PERTAINING TO THE ARTICLE SHOWN ON THIS SHEET IS THE PROPERTY OF POLYPHASER CORPORATION. THE INFORMATION IS NOT TO BE COPIED, REPRODUCED, REVEALED TO OR APPROPRIATED BY OTHERS WITHOUT THE EXPRESS WRITTEN CONSENT OF POLYPHASER CORPORATION.

REVISIONS				
REV LTR	DATE	ENG	MKTG	Q.A.
A	01/16/01 ^{SH}	KCB	PH	RM
B	05/02/01 ^{IB}	KCB	PH	LJ



MAXIMUM CHARACTERISTICS

SURGE:
50kA IEC 1000-4-5 8/20 μ s WAVEFORM 500 JOULES

TURN-ON:
600Vdc \pm 20%

TURN-ON TIME:
2.5ns for 2kV/ns

MAX POWER:
VHF 375W, UHF 125W

FREQUENCY RANGE:
50MHz TO 700MHz

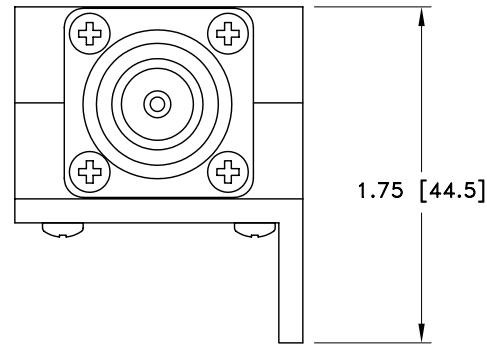
VSWR:
 \leq 1.2:1 @ 50MHz TO 700MHz

INSERTION LOSS:
<0.1dB OVER FREQUENCY RANGE

THROUGHPUT ENERGY:
<600 μ J FOR 2kV/ns

VIBRATION:
1G @ 5Hz TO 100Hz

TEMPERATURE:
-45°C TO +85°C STORAGE/OPERATING +50°C



CUSTOMER APPROVAL: _____ DATE: _____

ALL DIMENSIONS SHOWN ABOVE ARE FOR REFERENCE ONLY.

DRAFTER S. HALL	DATE 07/20/99	PolyPhaser® P.O. BOX 9000, MINDEN, NV 89423-9000 (775) 782-2511 FAX (775) 782-4476 IS-50UX-C1-ME CUSTOMER PRINT			
MECH ENGINEER P. SKROTZKI	DATE 04/04/00				
ELEC ENGINEER K. BARTEL	DATE 03/30/00				
MARKETING P. HEEREN	DATE 03/30/00				
QUALITY DEPT R. MATHEUS	DATE 03/31/00	CAGE CODE 61114	FILE NAME -C1	SCALE 1/1	SHEET 1 OF 1