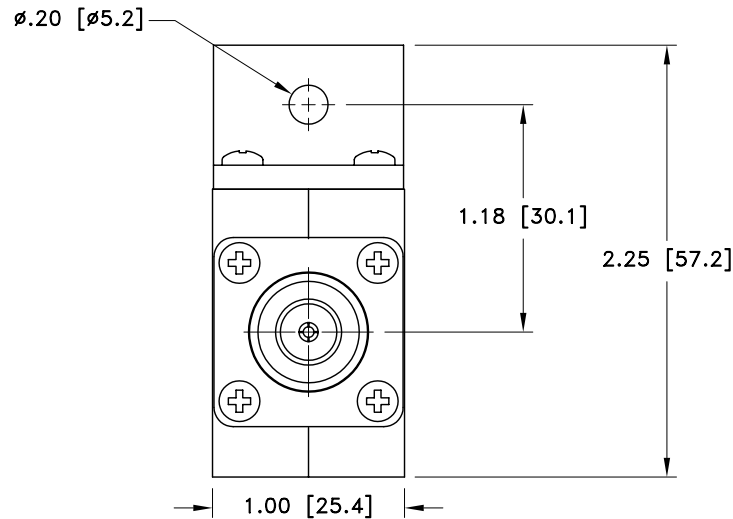
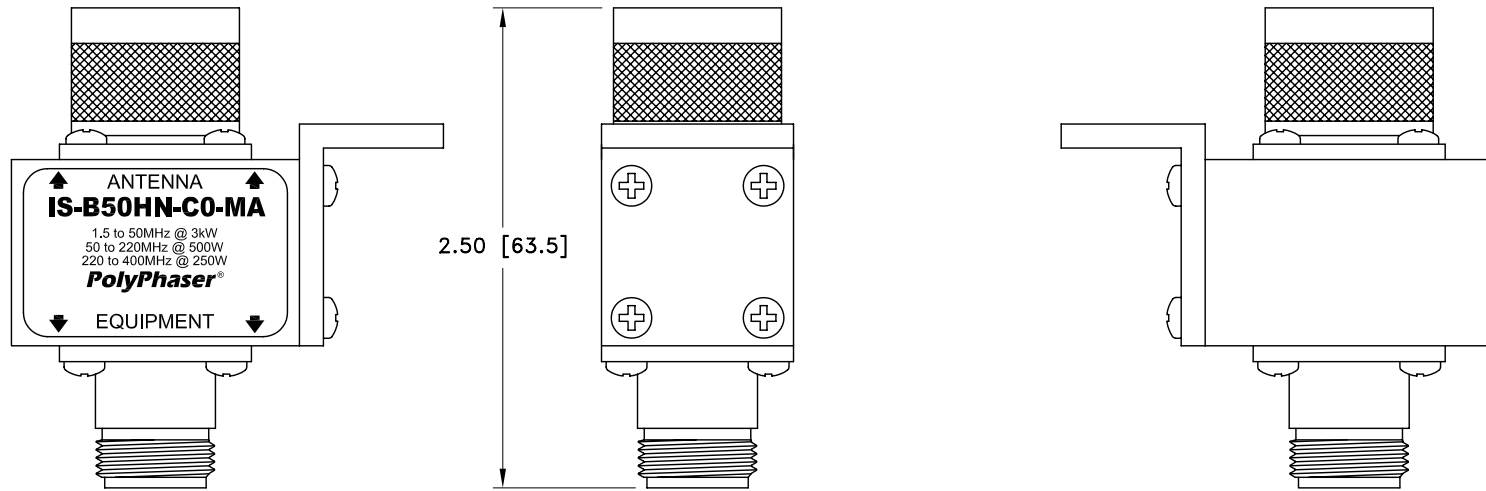


ALL DESIGN, OPERATIVE AND PROCESS DATA PERTAINING TO THE ARTICLE SHOWN ON THIS SHEET IS THE PROPERTY OF POLYPHASER CORPORATION. THE INFORMATION IS NOT TO BE COPIED, REPRODUCED, REVEALED TO OR APPROPRIATED BY OTHERS WITHOUT THE EXPRESS WRITTEN CONSENT OF POLYPHASER CORPORATION.

REVISIONS

REV LTR	DATE	ENG	MKTG	Q.A.
A	01/17/01 <sub>SH</sub>	KCB	PH	RM



MAXIMUM CHARACTERISTICS

APPLICATION:  
 BULKHEAD MOUNT  
 FREQUENCY RANGE:  
 1.5MHz TO 400MHz  
 VSWR:  
 $\leq 1.2:1$  @ 1.5MHz TO 2MHz  
 $\leq 1.1:1$  @ 2MHz TO 400MHz  
 INSERTION LOSS:  
 $\leq 0.1$ dB OVER FREQUENCY RANGE  
 THROUGHPUT ENERGY:  
 $\leq 20$ mJ  
 MAX POWER:  
 VHF 500W, UHF 250W, HF 3kW  
 TURN-ON:  
 $\pm 1200$ Vdc  $\pm 20\%$  7ns FOR 2kV/ns  
 SURGE:  
 50kA IEC 1000-4-5 8/20 $\mu$ s WAVEFORM 500 JOULES.  
 VIBRATION:  
 1G AT 5Hz TO 100Hz  
 TEMPERATURE:  
 $-45^{\circ}$ C TO  $+85^{\circ}$ C STORAGE/OPERATING  $+50^{\circ}$ C

CUSTOMER APPROVAL: \_\_\_\_\_ DATE: \_\_\_\_\_

ALL DIMENSIONS SHOWN ABOVE ARE FOR REFERENCE ONLY.

DRAFTER S. HALL	DATE 10/04/99	<b>PolyPhaser®</b> P.O. BOX 9000, MINDEN, NV 89423-9000 (775) 782-2511 FAX (775) 782-4476 DWG NO/PART NO/DESCRIPTION <b>IS-B50HN-C0-MA</b> CUSTOMER PRINT		
MECH ENGINEER M.MATTSON	DATE 03/17/00			
ELEC ENGINEER K. BARTEL	DATE 03/20/00			
MARKETING G. HORSTMAN	DATE 03/24/00			
QUALITY DEPT J. BERNARD	DATE 03/20/00			
CAGE CODE 61114	FILE NAME -C1	SCALE 1/1	SHEET 1 OF 1	