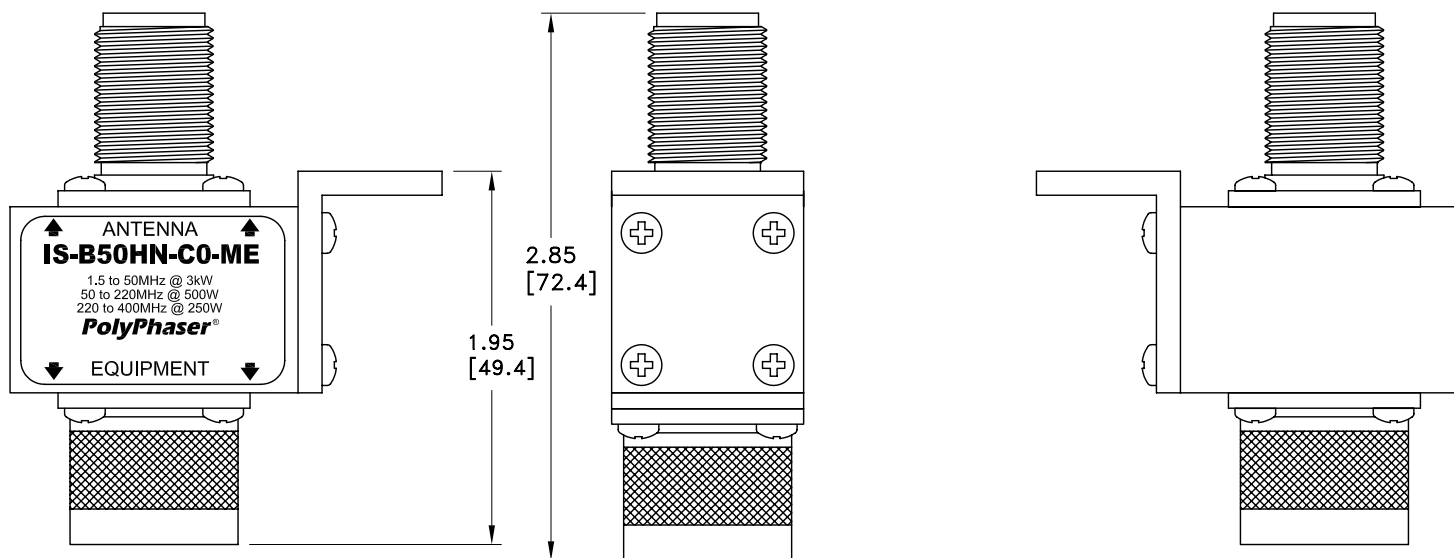


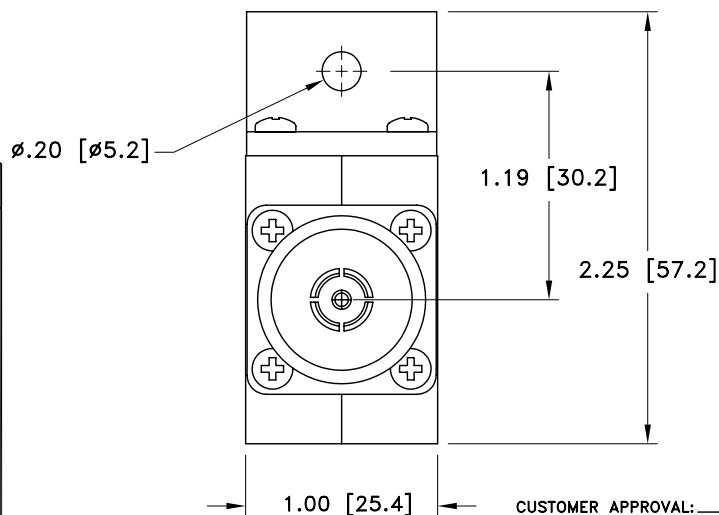
ALL DESIGN, OPERATIVE AND PROCESS DATA PERTAINING TO THE ARTICLE SHOWN ON THIS SHEET IS THE PROPERTY OF POLYPHASER CORPORATION. THE INFORMATION IS NOT TO BE COPIED, REPRODUCED, REVEALED TO OR APPROPRIATED BY OTHERS WITHOUT THE EXPRESS WRITTEN CONSENT OF POLYPHASER CORPORATION.

REVISIONS

REV LTR	DATE	ENG	MKTG	Q.A.



MAXIMUM CHARACTERISTICS	
APPLICATION:	BULKHEAD MOUNT
FREQUENCY RANGE:	1.5MHz TO 400MHz
VSWR:	≤1.2:1 @ 1.5MHz TO 2MHz ≤1.1:1 @ 2MHz TO 400MHz
INSERTION LOSS:	≤0.1dB OVER FREQUENCY RANGE
THROUGHPUT ENERGY:	≤20mJ
MAX POWER:	VHF 500W, UHF 250W, HF 3kW
TURN-ON:	±1200Vdc ±20% 7ns FOR 2kV/ns
SURGE:	50kA IEC 1000-4-5 8/20μs WAVEFORM 500 JOULES.
VIBRATION:	1G AT 5Hz TO 100Hz
TEMPERATURE:	-45°C TO +85°C STORAGE/OPERATING +50°C



CUSTOMER APPROVAL: \_\_\_\_\_ DATE: \_\_\_\_\_  
 ALL DIMENSIONS SHOWN ABOVE ARE FOR REFERENCE ONLY.

DRAFTER	S. HALL	DATE	08/14/01	<b>PolyPhaser®</b> P.O. BOX 9000, MINDEN, NV 89423-9000 (775) 782-2511 FAX (775) 782-4476 DWG NO/PART NO/DESCRIPTION <b>IS-B50HN-C0-ME</b> CUSTOMER PRINT			
MECH ENGINEER	R. DUNNING	DATE	08/14/01				
ELEC ENGINEER	J. JONES	DATE	08/14/01				
MARKETING	P. HEEREN	DATE	08/14/01				
QUALITY DEPT	R.MATHEUS	DATE	08/14/01				
CAGE CODE	61114	FILE NAME	-C1	SCALE	1/1	SHEET	1 OF 1