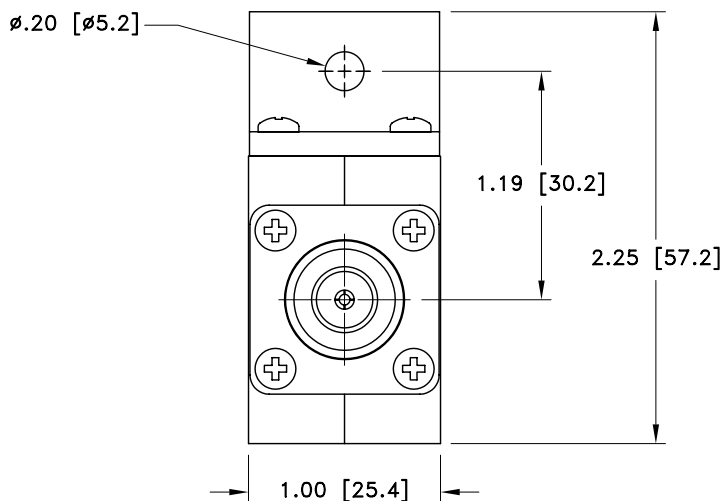
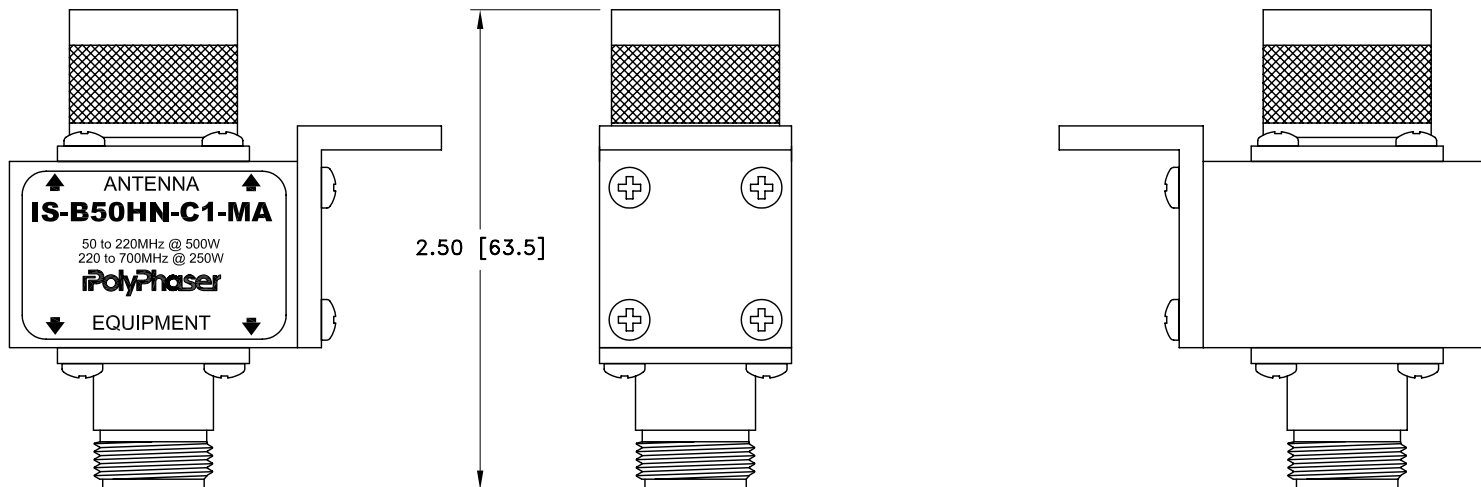


ALL DESIGN, OPERATIVE AND PROCESS DATA PERTAINING TO THE ARTICLE SHOWN ON THIS SHEET IS THE PROPERTY OF POLYPHASER CORPORATION. THE INFORMATION IS NOT TO BE COPIED, REPRODUCED, REVEALED TO OR APPROPRIATED BY OTHERS WITHOUT THE EXPRESS WRITTEN CONSENT OF POLYPHASER CORPORATION.

REVISIONS				
REV LTR	DATE	ENG	MKTG	Q.A.
B	01/17/01 ^{SH}	KCB	PH	RM
C	02/27/03 ^{IB}	LC	SD	LJ



MAXIMUM CHARACTERISTICS

SURGE:
50kA IEC 1000-4-5 8/20 μ s WAVEFORM 500 J

TURN-ON:
1200Vdc \pm 20%

TURN-ON TIME:
7ns FOR 2kV/ns

FREQUENCY RANGE:
50MHz TO 700MHz

VSWR:
 \leq 1.2:1 @ 50 TO 60 MHz
 \leq 1.1:1 @ 60 TO 700MHz

INSERTION LOSS:
 \leq 0.1dB OVER FREQUENCY RANGE

THROUGHPUT ENERGY:
 \leq 1mJ


MAX POWER:
VHF 500W, UHF 250W

TEMPERATURE:
-45°C TO +85°C STORAGE/OPERATING +50°C

VIBRATION:
1G @ 5Hz TO 100Hz

CUSTOMER APPROVAL: _____ DATE: _____

ALL DIMENSIONS SHOWN ABOVE ARE FOR REFERENCE ONLY.

DRAFTER S. HALL	DATE 05/18/99	 P.O. BOX 9000 MINDEN, NV 89423 TEL: 775-782-2511 FAX: 775-782-4476 DWG NO/PART NO/DESCRIPTION IS-B50HN-C1-MA CUSTOMER PRINT	
MECH ENGINEER P. SKROTZKI	DATE 07/07/99		
ELEC ENGINEER K. BARTEL	DATE 07/06/99		
MARKETING T. FRALEY	DATE 07/08/99		
QUALITY DEPT R. MATHEUS	DATE 07/08/99		
CAGE CODE 61114	FILE NAME -C1	SCALE 1/1	SHEET 1 OF 1