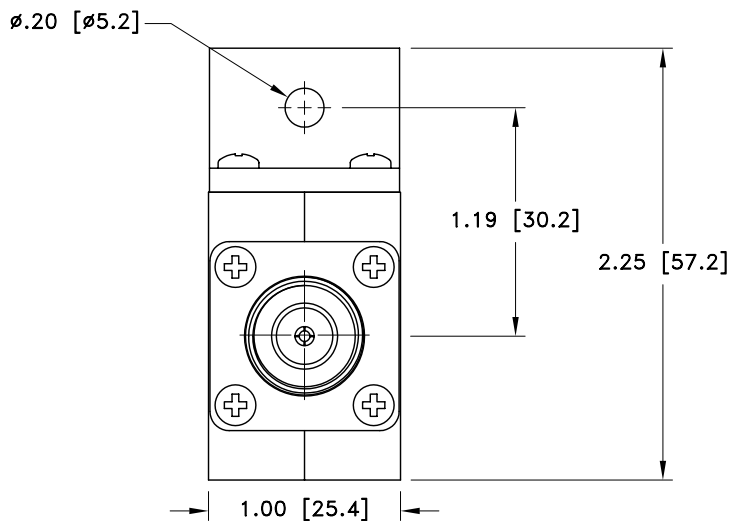
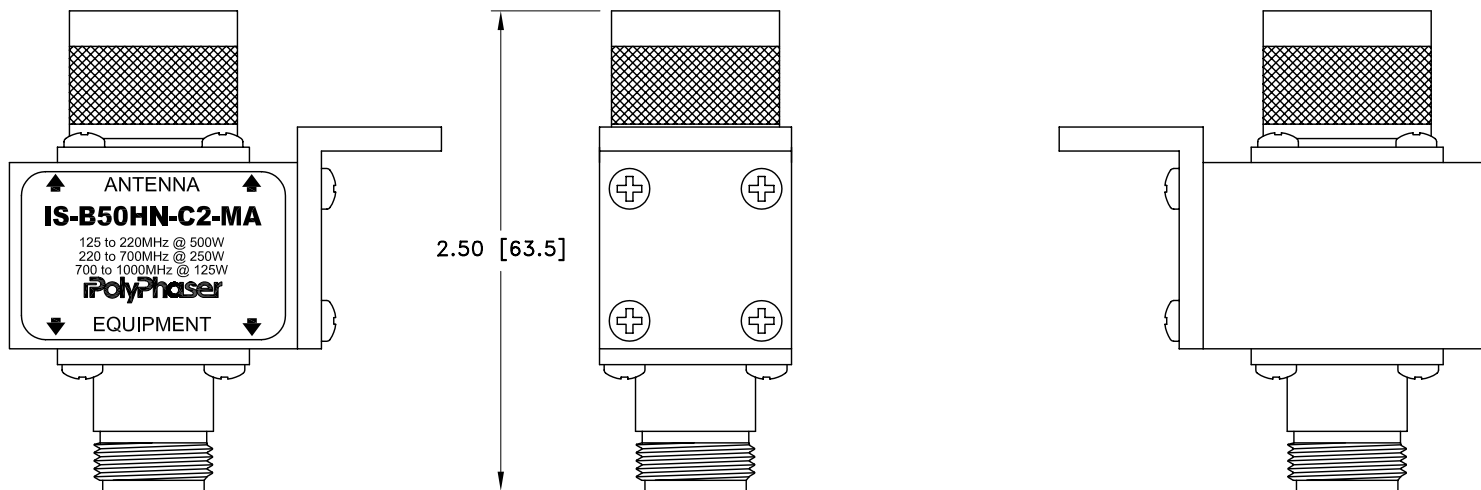


ALL DESIGN, OPERATIVE AND PROCESS DATA PERTAINING TO THE ARTICLE SHOWN ON THIS SHEET IS THE PROPERTY OF POLYPHASER CORPORATION. THE INFORMATION IS NOT TO BE COPIED, REPRODUCED, REVEALED TO OR APPROPRIATED BY OTHERS WITHOUT THE EXPRESS WRITTEN CONSENT OF POLYPHASER CORPORATION.


REVISIONS				
REV LTR	DATE	ENG	MKTG	Q.A.
A	08/31/99 ^{SH}	M.M	R.J	J.B
B	01/17/01 ^{SH}	KCB	PH	RM
C	01/29/03 ^{SH}	LC	PH	LJ



CUSTOMER APPROVAL: _____ DATE: _____

ALL DIMENSIONS SHOWN ABOVE ARE FOR REFERENCE ONLY.

MAXIMUM CHARACTERISTICS
APPLICATION: BULKHEAD MOUNT
FREQUENCY RANGE: 125MHz TO 1000MHz
VSWR: ≤1.1:1 OVER FREQUENCY RANGE
INSERTION LOSS: ≤0.1dB OVER FREQUENCY RANGE
THROUGHPUT ENERGY: ≤800μJ
MAX POWER: VHF 500W, UHF (LOW) 250W, 700MHz TO 1GHz 125W
TURN-ON: ±1200Vdc ±20% 7ns FOR 2kV/ns
SURGE: 50kA IEC 1000-4-5 8/20μs WAVEFORM 500 JOULES.
VIBRATION: 1G AT 5Hz TO 100Hz
TEMPERATURE: -45°C TO +85°C STORAGE/OPERATING +50°C

DRAFTER S. HALL	DATE 10/26/98	 P.O. BOX 9000 MINDEN, NV 89423 TEL: 775-782-2511 FAX: 775-782-4476 DWG NO/PART NO/DESCRIPTION IS-B50HN-C2-MA CUSTOMER PRINT			
MECH ENGINEER J. VITELLO	DATE 11/30/98				
ELEC ENGINEER L. CHANG	DATE 11/30/98				
MARKETING - - - -	DATE - - - -				
QUALITY DEPT R. MATHEUS	DATE 12/01/98	CAGE CODE 61114	FILE NAME -C1	SCALE 1/1	SHEET 1 OF 1