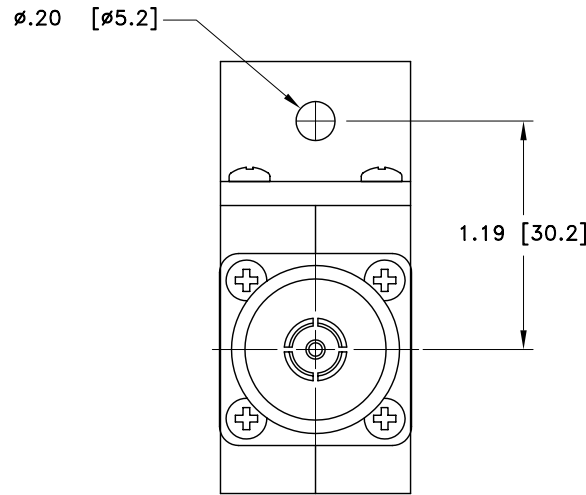
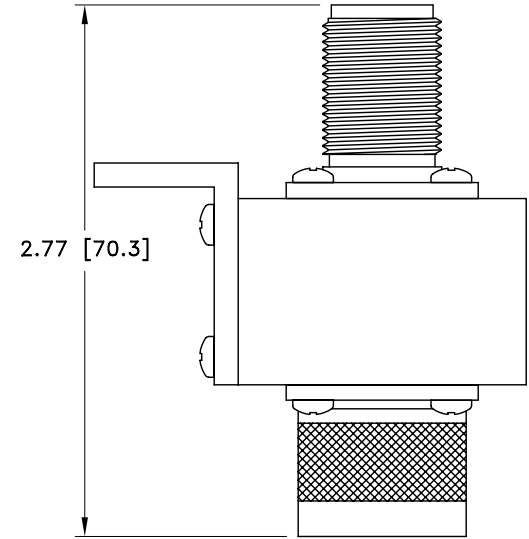
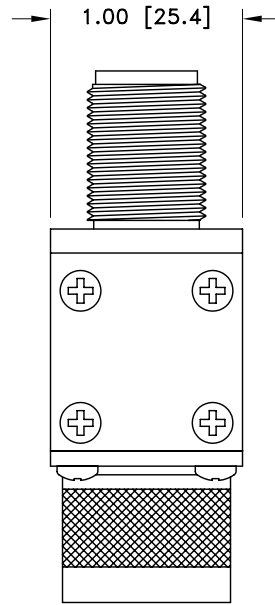
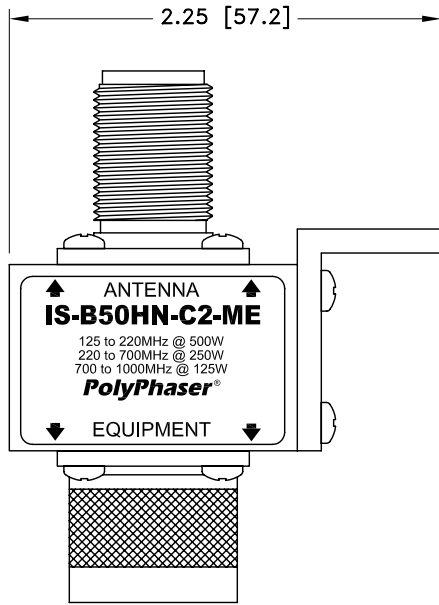


ALL DESIGN, OPERATIVE AND PROCESS DATA PERTAINING TO THE ARTICLE SHOWN ON THIS SHEET IS THE PROPERTY OF POLYPHASER CORPORATION. THE INFORMATION IS NOT TO BE COPIED, REPRODUCED, REVEALED TO OR APPROPRIATED BY OTHERS WITHOUT THE EXPRESS WRITTEN CONSENT OF POLYPHASER CORPORATION.

| REVISIONS | | | | |
|-----------|------------------------|-----|------|------|
| REV LTR | DATE | ENG | MKTG | Q.A. |
| B | 09/01/99 ^{SH} | M.M | R.J | J.B |
| C | 01/17/01 ^{SH} | KCB | PH | RM |



| MAXIMUM CHARACTERISTICS | |
|---|--|
| SURGE: 50kA IEC 1000-4-5 8/20μs WAVEFORM 500 JOULES | |
| TURN-ON: 1,200Vdc ±20% | |
| TURN-ON TIME: 7ns FOR 2kV/ns | |
| FREQUENCY RANGE: 125MHz TO 1,000MHz | |
| VSWR: ≤1.1 TO 1 OVER FREQUENCY RANGE | |
| INSERTION LOSS: ≤0.1dB OVER FREQUENCY RANGE | |
| TEMPERATURE: -55°C TO +125°C STORAGE/OPERATING +50°C | |

CUSTOMER APPROVAL: _____ DATE: _____

ALL DIMENSIONS SHOWN ABOVE ARE FOR REFERENCE ONLY.

| | | | | | |
|----------------------------|------------------|---|------------------|--------------|-----------------|
| DRAFTER M. JOHNSON | DATE 08/11/94 | PolyPhaser® P.O. BOX 9000, MINDEN, NV 89423-9000 (775) 782-2511 FAX (775) 782-4476 DWG NO/PART NO/DESCRIPTION IS-B50HN-C2-ME CUSTOMER PRINT | | | |
| MECH ENGINEER - - - - | DATE - - - - | | | | |
| ELEC ENGINEER K. BARTEL | DATE 08/11/94 | | | | |
| MARKETING - - - - | DATE - - - - | | | | |
| QUALITY DEPT R. MATHEUS | DATE 08/11/94 | CAGE CODE 61114 | FILE NAME -C1 | SCALE 1/1 | SHEET 1 OF 1 |