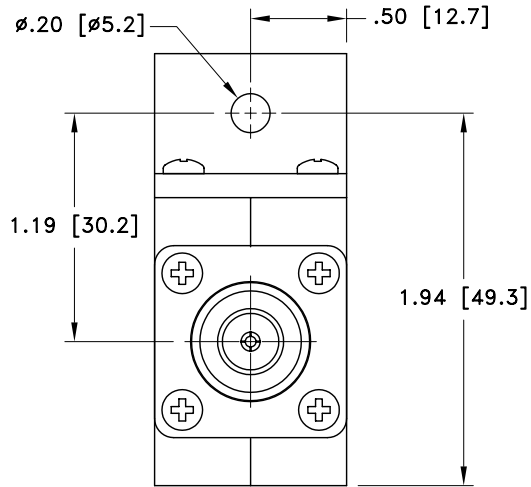
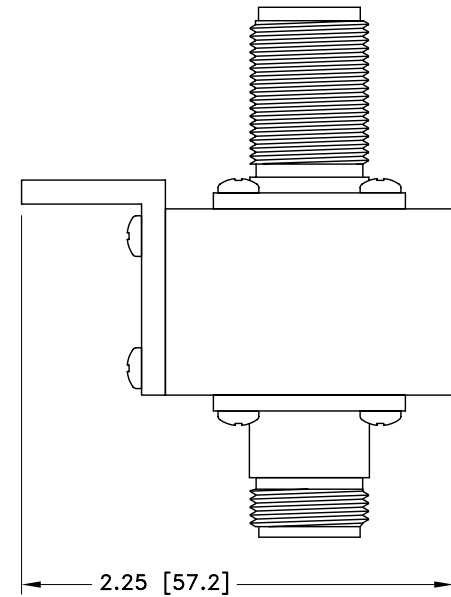
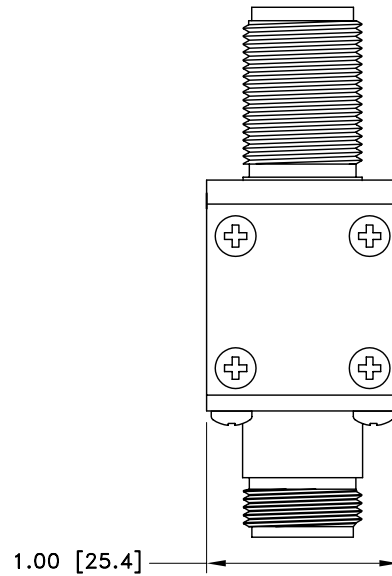
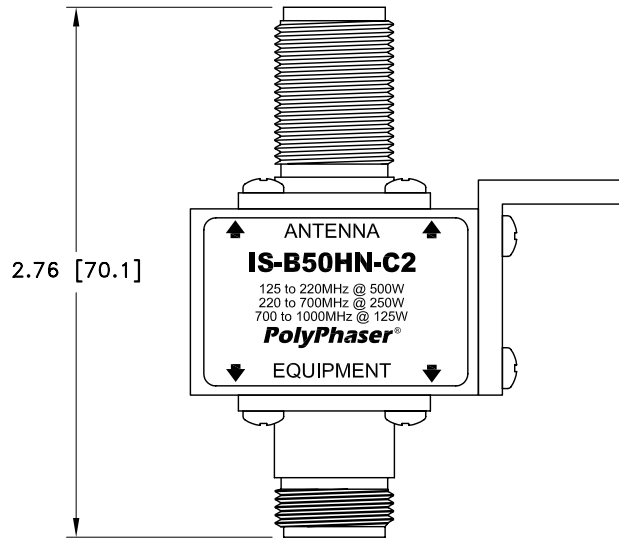


ALL DESIGN, OPERATIVE AND PROCESS DATA PERTAINING TO THE ARTICLE SHOWN ON THIS SHEET IS THE PROPERTY OF POLYPHASER CORPORATION. THE INFORMATION IS NOT TO BE COPIED, REPRODUCED, REVEALED TO OR APPROPRIATED BY OTHERS WITHOUT THE EXPRESS WRITTEN CONSENT OF POLYPHASER CORPORATION.

REVISIONS				
REV LTR	DATE	ENG	MKTG	Q.A.
E	01/17/01 <sub>SH</sub>	KCB	PH	RM



CUSTOMER APPROVAL: \_\_\_\_\_ DATE: \_\_\_\_\_

ALL DIMENSIONS SHOWN ABOVE ARE FOR REFERENCE ONLY.

MAXIMUM CHARACTERISTICS
APPLICATION: BULKHEAD MOUNT
FREQUENCY RANGE: 125MHz TO 1000MHz
VSWR: ≤1.1 TO 1 OVER FREQUENCY RANGE
INSERTION LOSS: ≤0.1dB OVER FREQUENCY RANGE
MAX POWER: 500W @ 125MHz DECREASING TO 125W @ 1GHz
TURN-ON: 1200Vdc±20%
THROUGHPUT ENERGY: ≤800μJ FOR 8/20μs WAVEFORM
OPERATING TEMPERATURE: -55°C TO +50°C
STORAGE TEMPERATURE: -55°C TO +125°C
RELATIVE HUMIDITY: 90% AT 40°C
VIBRATION 1G AT 5Hz TO 100Hz

DRAFTER M. JOHNSON	DATE 08/11/94	<b>PolyPhaser®</b> P.O. BOX 9000, MINDEN, NV 89423-9000 (775) 782-2511 FAX (775) 782-4476 DWG NO/PART NO/DESCRIPTION <b>IS-B50HN-C2</b> CUSTOMER PRINT			
MECH ENGINEER -	DATE -				
ELEC ENGINEER J. JONES	DATE 08/11/94				
MARKETING -	DATE -				
QUALITY DEPT R. MATHEUS	DATE 08/11/99	CAGE CODE 61114	FILE NAME -C1	SCALE 1/1	SHEET 1 OF 1