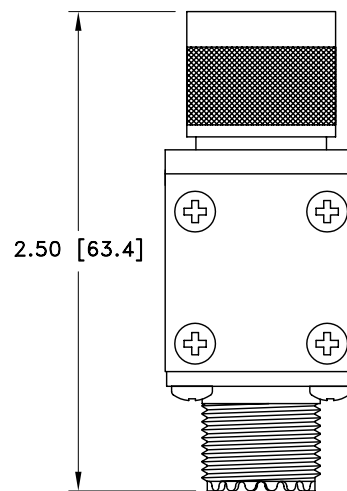
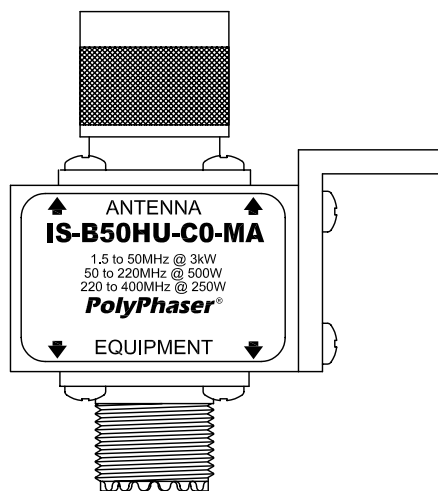
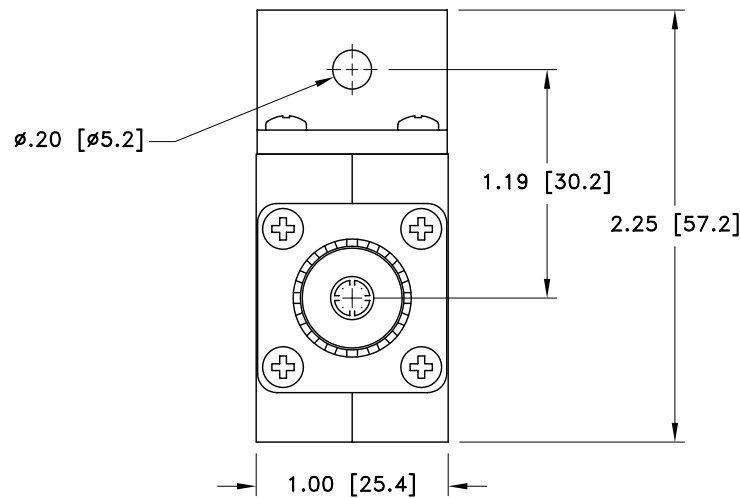


ALL DESIGN, OPERATIVE AND PROCESS DATA PERTAINING TO THE ARTICLE SHOWN ON THIS SHEET IS THE PROPERTY OF POLYPHASER CORPORATION. THE INFORMATION IS NOT TO BE COPIED, REPRODUCED, REVEALED TO OR APPROPRIATED BY OTHERS WITHOUT THE EXPRESS WRITTEN CONSENT OF POLYPHASER CORPORATION.

REVISIONS				
REV LTR	DATE	ENG	MKTG	Q.A.
A	09/02/99 ^{SH}	M.M	P.H	J.B
B	01/17/01 ^{SH}	KCB	PH	RM
C	05/02/01 ^{IB}	RCD	PH	RM



MAXIMUM CHARACTERISTICS
APPLICATION: BULKHEAD MOUNT
SURGE: 50kA IEC 1000-4-5 8/20 μ s WAVEFORM 500J
TURN-ON: 1200Vdc \pm 20% 7ns FOR 2kV/ns
FREQUENCY RANGE: 1.5MHz TO 400MHz
VSWR: \leq 1.2:1 @ 1.5MHz TO 400MHz
INSERTION LOSS: <0.1dB OVER FREQUENCY RANGE
MAX POWER: HF 3kW, VHF 500W, UHF 250W
THROUGHPUT ENERGY: <20mJ FOR 3kA, 8/20 μ s WAVE FORM
OPERATING TEMPERATURE: +50°C
STORAGE TEMPERATURE: -45°C TO +85°C
RELATIVE HUMIDITY: 90% AT 40°C
VIBRATION: 1G AT 5Hz TO 100Hz



CUSTOMER APPROVAL: _____ DATE: _____

ALL DIMENSIONS SHOWN ABOVE ARE FOR REFERENCE ONLY.

DRAFTER J. CALLISTER	DATE 10/20/98	PolyPhaser [®] P.O. BOX 9000, MINDEN, NV 89423-9000 (775) 782-2511 FAX (775) 782-4476 DWG NO/PART NO/DESCRIPTION			
MECH ENGINEER J.VITELLO	DATE 11/05/98				
ELEC ENGINEER K. BARTEL	DATE 11/05/98	IS-B50HU-C0-MA CUSTOMER PRINT			
MARKETING - - - -	DATE - - - -				
QUALITY DEPT R. MATHEUS	DATE 11/06/98	CAGE CODE 61114	FILE NAME -C1	SCALE 1/1	SHEET 1 OF 1