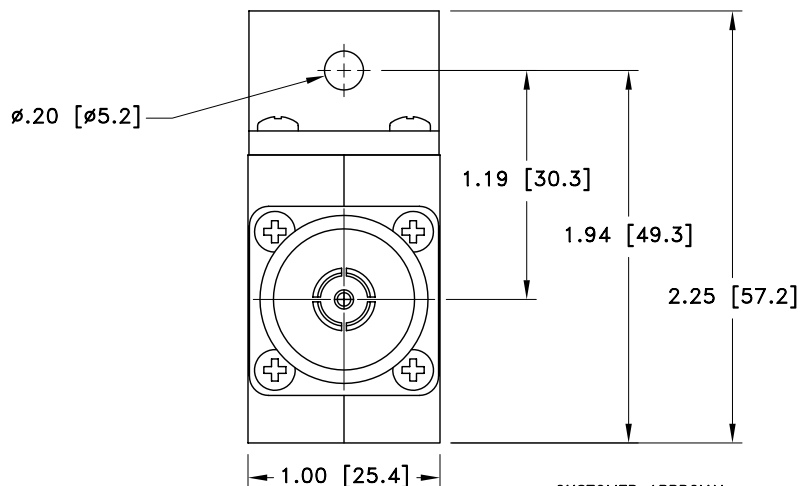
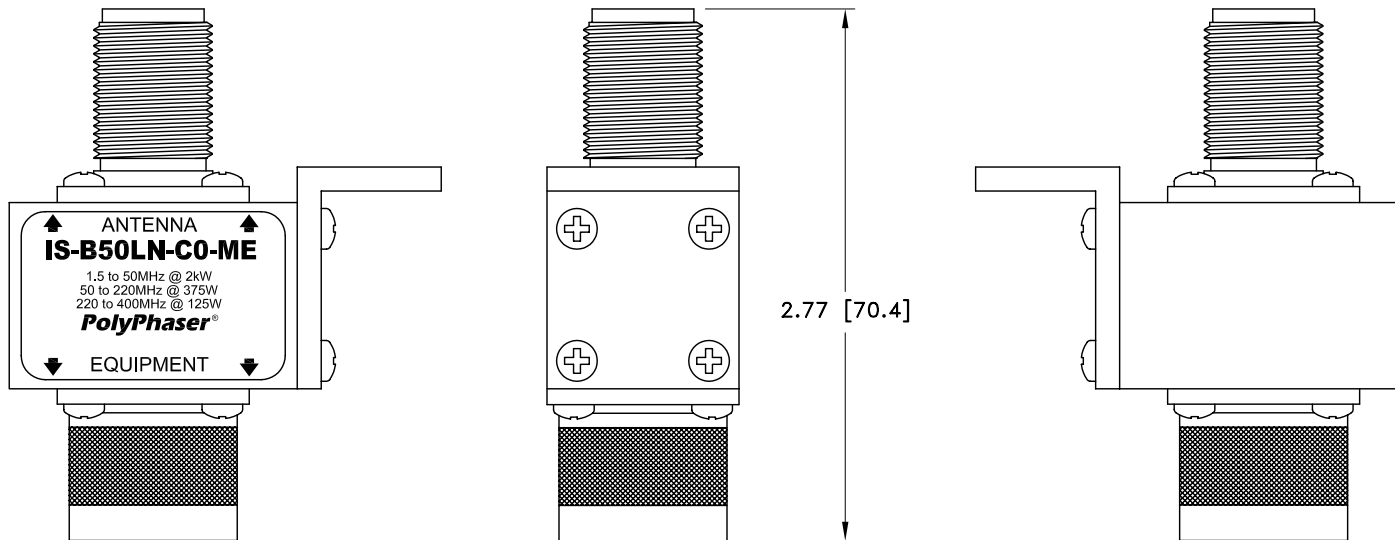


ALL DESIGN, OPERATIVE AND PROCESS DATA PERTAINING TO THE ARTICLE SHOWN ON THIS SHEET IS THE PROPERTY OF POLYPHASER CORPORATION. THE INFORMATION IS NOT TO BE COPIED, REPRODUCED, REVEALED TO OR APPROPRIATED BY OTHERS WITHOUT THE EXPRESS WRITTEN CONSENT OF POLYPHASER CORPORATION.

REVISIONS				
REV LTR	DATE	ENG	MKTG	Q.A.
A	09/08/99 <sup>SH</sup>	M.M	P.H	J.B
B	01/11/01 <sup>IB</sup>	KCB	PH	RM



MAXIMUM CHARACTERISTICS
APPLICATION: BULKHEAD MOUNT
FREQUENCY RANGE: 1.5MHz TO 400MHz
VSWR: ≤1.2 TO 1 @ 1.5MHz TO 2MHz ≤1.1 TO 1 @ 2MHz TO 400MHz
INSERTION LOSS: ≤0.1dB OVER FREQUENCY RANGE
MAX POWER: 2kW @ 1.5MHz TO 50MHz 375W @ 50MHz TO 220MHz 125W @ 220MHz TO 400MHz
THROUGHPUT ENERGY: ≤10mJ FOR 3kA, 8/20μs WAVEFORM
OPERATING TEMPERATURE: +50°C
STORAGE TEMPERATURE: -45°C TO +85°C
VIBRATION: 1G UP TO 100Hz

CUSTOMER APPROVAL: \_\_\_\_\_ DATE: \_\_\_\_\_

ALL DIMENSIONS SHOWN ABOVE ARE FOR REFERENCE ONLY.

DRAFTER J. CALLISTER	DATE 03/04/96	<b>PolyPhaser®</b> P.O. BOX 9000, MINDEN, NV 89423-9000 (775) 782-2511 FAX (775) 782-4476 DWG NO/PART NO/DESCRIPTION <b>IS-B50LN-C0-ME</b> CUSTOMER PRINT			
MECH ENGINEER O. AKDAG	DATE 03/11/96				
ELEC ENGINEER T.KULBIEDA	DATE 03/11/96				
MARKETING - - - -	DATE - - - -				
QUALITY DEPT R. MATHEUS	DATE 03/11/96	CAGE CODE 61114	FILE NAME -C1	SCALE 1/1	SHEET 1 OF 1