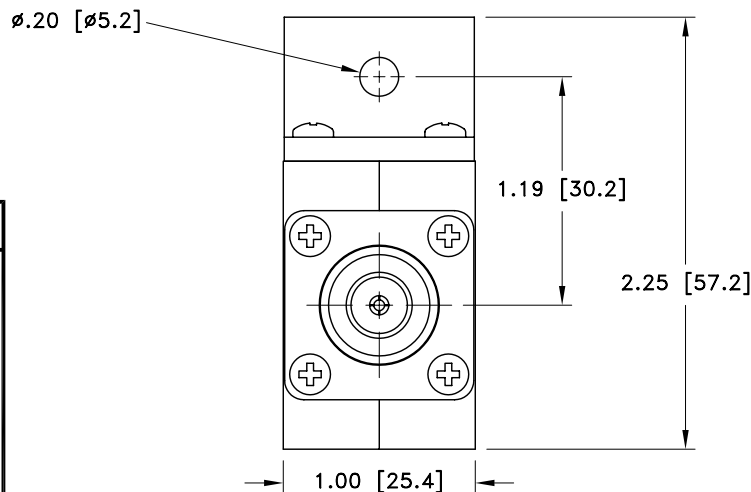
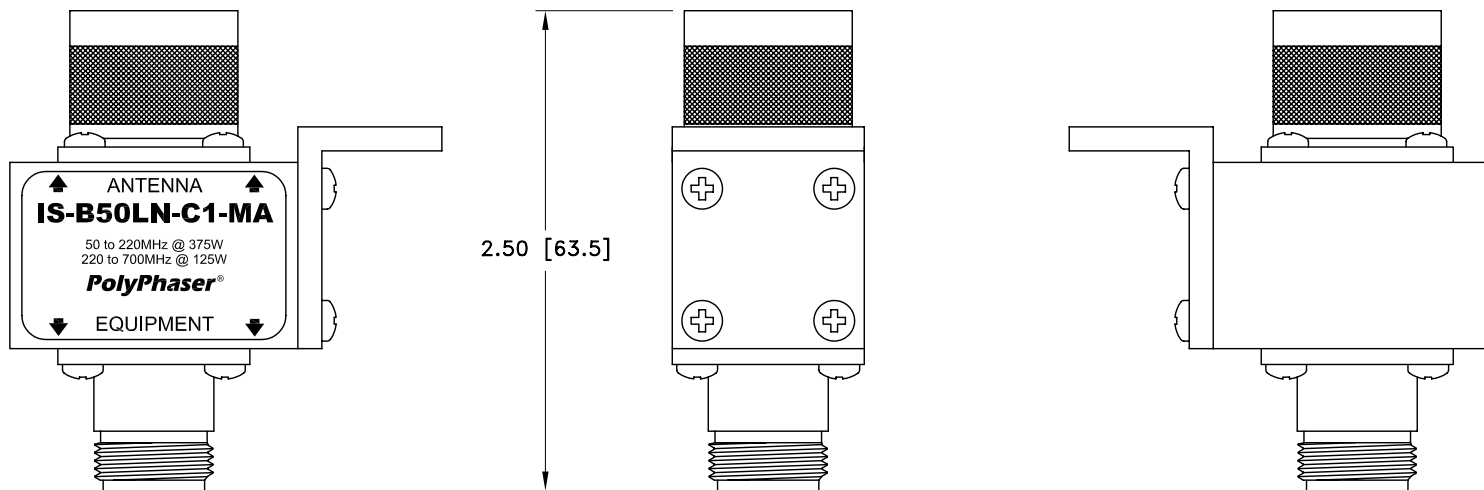


ALL DESIGN, OPERATIVE AND PROCESS DATA PERTAINING TO THE ARTICLE SHOWN ON THIS SHEET IS THE PROPERTY OF POLYPHASER CORPORATION. THE INFORMATION IS NOT TO BE COPIED, REPRODUCED, REVEALED TO OR APPROPRIATED BY OTHERS WITHOUT THE EXPRESS WRITTEN CONSENT OF POLYPHASER CORPORATION.

REVISIONS				
REV LTR	DATE	ENG	MKTG	Q.A.
B	09/27/99 <sup>SH</sup>	M.M	T.M	R.M
C	01/11/01 <sup>IB</sup>	KCB	PH	RM



### MAXIMUM CHARACTERISTICS

**SURGE:**  
50kA IEC 1000-4-5 8/20 $\mu$ s WAVEFORM

**TURN-ON:**  
600Vdc  $\pm$ 20%

**TURN-ON TIME:**  
2.5ns FOR 2kV/ns

**MAX POWER:**  
VHF 375W, UHF 125W

**FREQUENCY RANGE:**  
50MHZ TO 700MHZ

**VSWR:**  
 $\leq$ 1.1:1 OVER FREQUENCY RANGE

**INSERTION LOSS:**  
 $\leq$ 0.1dB OVER FREQUENCY RANGE

**THROUGHPUT ENERGY:**  
 $\leq$ 600 $\mu$ J FOR 2kV/ns

**TEMPERATURE:**  
-55°C TO +125°C

CUSTOMER APPROVAL: \_\_\_\_\_ DATE: \_\_\_\_\_

ALL DIMENSIONS SHOWN ABOVE ARE FOR REFERENCE ONLY.

DRAFTER M. WALSER	DATE 01/24/96	<b>PolyPhaser®</b> P.O. BOX 9000, MINDEN, NV 89423-9000 (775) 782-2511 FAX (775) 782-4476 DWG NO/PART NO/DESCRIPTION <b>IS-B50LN-C1-MA</b> CUSTOMER PRINT			
MECH ENGINEER - - - - -	DATE - - - - -				
ELEC ENGINEER T. KULBIEDA	DATE 01/25/96				
MARKETING - - - - -	DATE - - - - -				
QUALITY DEPT R. MATHEUS	DATE 01/25/96	CAGE CODE 61114	FILE NAME -C1	SCALE 1/1	SHEET 1 OF 1