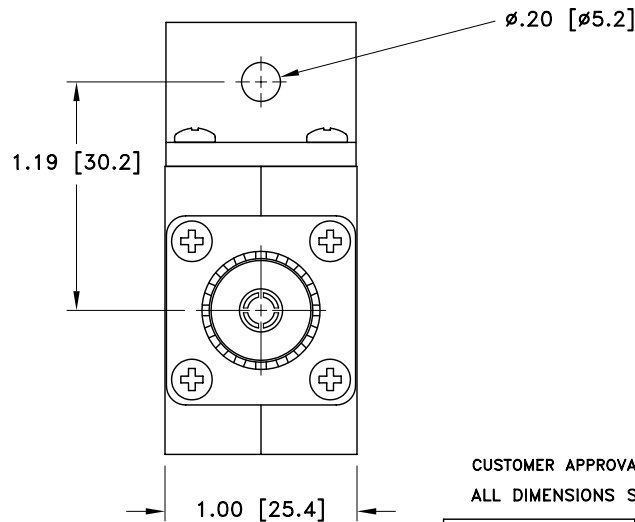
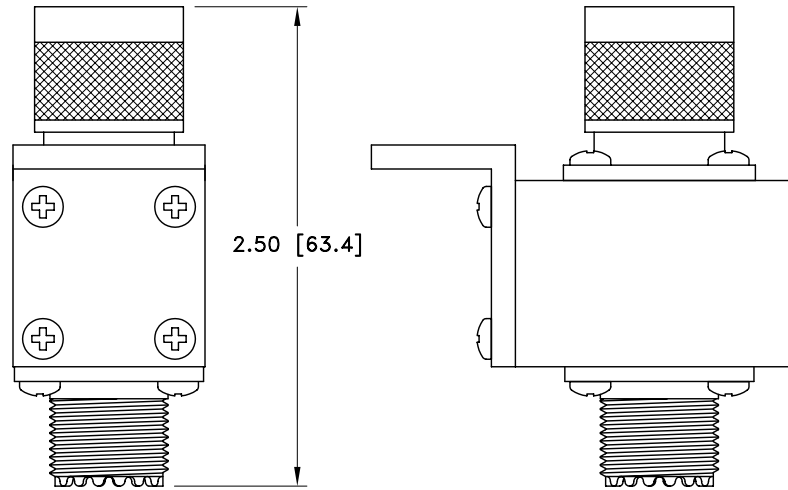
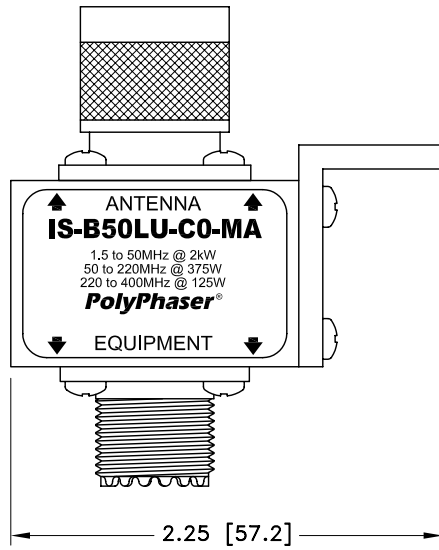


ALL DESIGN, OPERATIVE AND PROCESS DATA PERTAINING TO THE ARTICLE SHOWN ON THIS SHEET IS THE PROPERTY OF POLYPHASER CORPORATION. THE INFORMATION IS NOT TO BE COPIED, REPRODUCED, REVEALED TO OR APPROPRIATED BY OTHERS WITHOUT THE EXPRESS WRITTEN CONSENT OF POLYPHASER CORPORATION.

REVISIONS

REV LTR	DATE	ENG	MKTG	Q.A.
A	07/06/99 ^{SH}	M.M	T.M	R.M
B	01/09/01 ^{SH}	KCB	PH	RM
C	05/03/01 ^{IB}	RCD	PH	RM



MAXIMUM CHARACTERISTICS

APPLICATION:
BULKHEAD MOUNT

FREQUENCY RANGE:
1.5MHz TO 400MHz

VSWR:
≤1.2:1 @ 1.5MHz TO 400MHz

INSERTION LOSS:
≤0.1dB OVER FREQUENCY RANGE

MAX POWER:
2kW @ 1.5MHz TO 50MHz
375W @ 50MHz TO 220MHz
125W @ 220MHz TO 400MHz

THROUGHPUT ENERGY:
≤10mJ FOR 3kA, 8/20μs WAVEFORM

OPERATING TEMPERATURE:
+50°C

STORAGE TEMPERATURE:
-45°C TO +85°C

VIBRATION:
1G AT 5Hz TO 100Hz

CUSTOMER APPROVAL: _____ DATE: _____

ALL DIMENSIONS SHOWN ABOVE ARE FOR REFERENCE ONLY.

DRAFTER C. GASPARINI	DATE 06/10/98	PolyPhaser® P.O. BOX 9000, MINDEN, NV 89423-9000 (775) 782-2511 FAX (775) 782-4476 DWG NO/PART NO/DESCRIPTION IS-B50LU-CO-MA CUSTOMER PRINT			
MECH ENGINEER J. VITELLO	DATE 11/05/98				
ELEC ENGINEER T. KULBIEDA	DATE 11/04/98				
MARKETING - - - -	DATE - - - -				
QUALITY DEPT R. MATHEUS	DATE 11/04/98	CAGE CODE 61114	FILE NAME -C1	SCALE 1/1	SHEET 1 OF 1