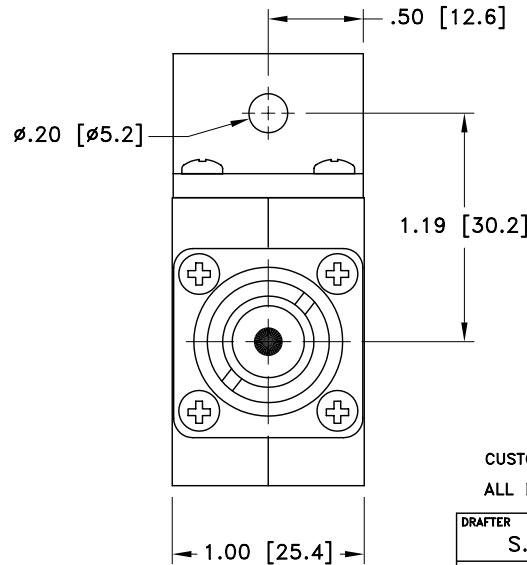
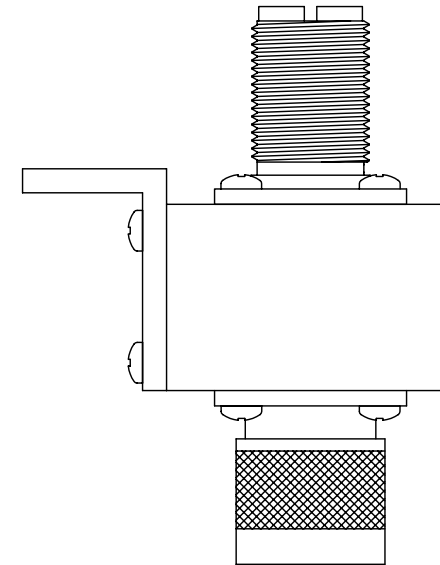
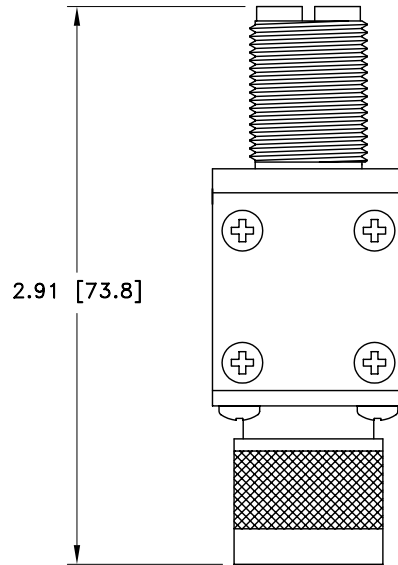
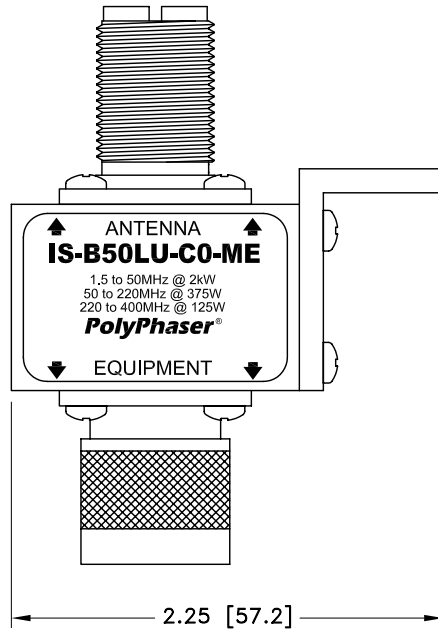


ALL DESIGN, OPERATIVE AND PROCESS DATA PERTAINING TO THE ARTICLE SHOWN ON THIS SHEET IS THE PROPERTY OF POLYPHASER CORPORATION. THE INFORMATION IS NOT TO BE COPIED, REPRODUCED, REVEALED TO OR APPROPRIATED BY OTHERS WITHOUT THE EXPRESS WRITTEN CONSENT OF POLYPHASER CORPORATION.

REVISIONS

REV LTR	DATE	ENG	MKTG	Q.A.
A	01/11/01 <sup>IB</sup>	KCB	PH	RM
B	05/03/01 <sup>IB</sup>	RCD	PH	RM
C	05/28/02 <sup>IB</sup>	JJ	PH	RM



MAXIMUM CHARACTERISTICS

APPLICATION:  
BULKHEAD MOUNT  
SURGE:  
50KA IEC 1000-4-5 8/20 $\mu$ s WAVEFORM 500 JOULES  
FREQUENCY RANGE:  
1.5MHz TO 400MHz  
VSWR:  
 $\leq 1.2:1$  @ 1.5MHz TO 400MHz  
TURN-ON:  
600Vdc  $\pm 20\%$  2.5ns FOR 2KV/ns.  
INSERTION LOSS:  
 $\leq 0.1$ dB OVER FREQUENCY RANGE  
MAX POWER:  
HF 2KW  
VHF 375W  
UHF 125W  
THROUGHPUT ENERGY:  
 $\leq 10$ mJ FOR 3kA, 8/20 $\mu$ s WAVEFORM  
TEMPERATURE:  
-45°C TO +85°C STORAGE/OPERATING +50C  
VIBRATION:  
1G @ 5Hz TO 100Hz

CUSTOMER APPROVAL: \_\_\_\_\_ DATE: \_\_\_\_\_

ALL DIMENSIONS SHOWN ABOVE ARE FOR REFERENCE ONLY.

DRAFTER S. HALL	DATE 07/07/99	<b>PolyPhaser®</b> P.O. BOX 9000, MINDEN, NV 89423-9000 (775) 782-2511 FAX (775) 782-4476 DWG NO/PART NO/DESCRIPTION <b>IS-B50LU-CO-ME</b> CUSTOMER PRINT			
MECH ENGINEER P. SKROTZKI	DATE 04/04/00				
ELEC ENGINEER K. BARTEL	DATE 03/30/00				
MARKETING P. HEEREN	DATE 03/30/00				
QUALITY DEPT R. MATHEUS	DATE 03/31/00	CAGE CODE 61114	FILE NAME -C1	SCALE 1/1	SHEET 1 OF 1