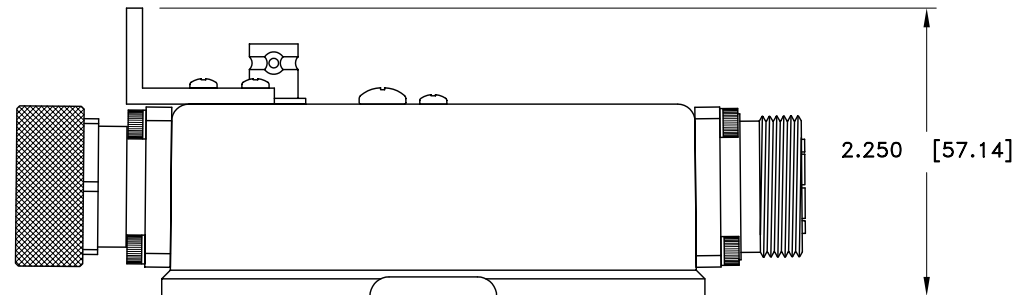
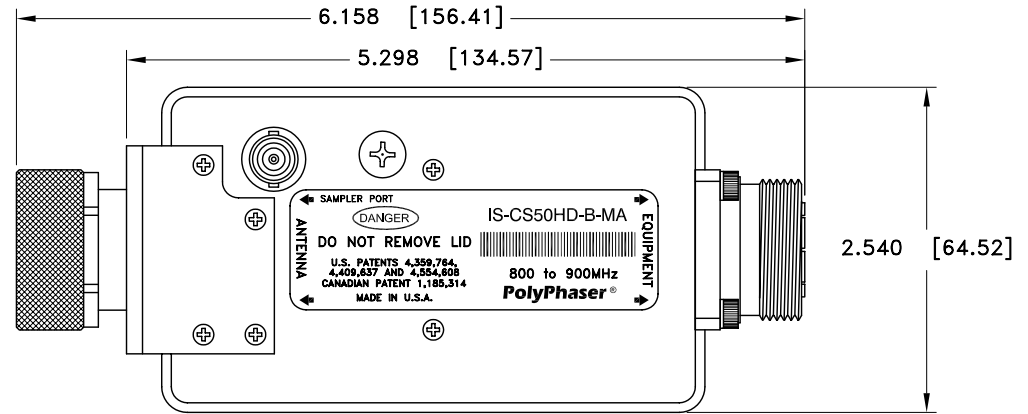
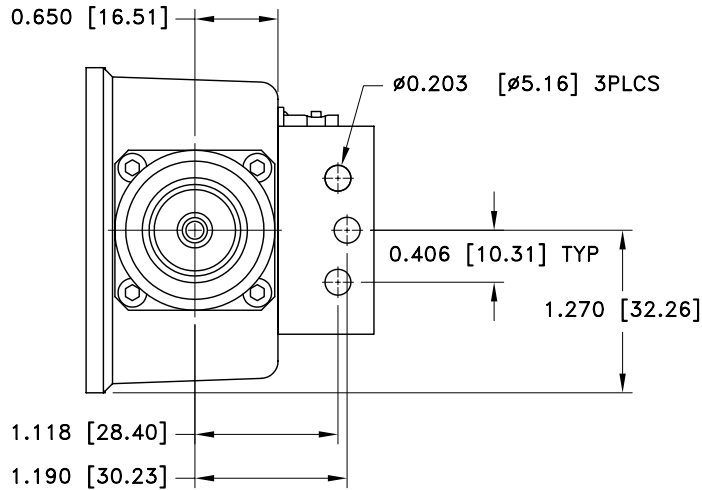


ALL DESIGN, OPERATIVE AND PROCESS DATA PERTAINING TO THE ARTICLE SHOWN ON THIS SHEET IS THE PROPERTY OF POLYPHASER CORPORATION. THE INFORMATION IS NOT TO BE COPIED, REPRODUCED, REVEALED TO OR APPROPRIATED BY OTHERS WITHOUT THE EXPRESS WRITTEN CONSENT OF POLYPHASER CORPORATION.

REVISIONS

REV	LTR	DATE	APPROVAL	Q.A.



MAXIMUM CHARACTERISTICS

APPLICATION:
BULKHEAD MOUNT

FREQUENCY RANGE:
800 TO 900MHz

TURN-ON:
1200Vdc Vt: 1800V

VSWR:
≤1.1 TO 1 OVER FREQUENCY RANGE

INSERTION LOSS:
≤0.1dB OVER FREQUENCY RANGE

POWER:
750W SINGLE CHANNEL

THROUGHPUT ENERGY:
≤10μJ FOR 3kA, 8/20μs WAVEFORM

OPERATING TEMPERATURE:
-25°C TO +50°C

STORAGE TEMPERATURE:
-25°C TO +50°C

RELATIVE HUMIDITY:
90% @ +40°C

VIBRATION:
1G AT 5Hz TO 100Hz

CUSTOMER APPROVAL: _____ DATE: _____

ALL DIMENSIONS SHOWN ABOVE ARE FOR REFERENCE ONLY.

DRAFTER C. GASPARINI	DATE 08/14/97	<p align="center">PolyPhaser CORPORATION</p> <p align="center">P.O. BOX 9000, MINDEN, NV 89423-9000 (702) 782-2511 FAX (702) 782-4476</p> <p align="center">IS-CS50HD-B-MA</p> <p align="center">CUSTOMER PRINT</p>			
MECH ENGINEER	DATE				
ELEC ENGINEER	DATE				
QUALITY DEPT	DATE				
CAGE CODE 61114	FILE NAME 111469C	SCALE 1=1.5	SHEET 1 OF 1	DWG NO/PART NO/DESCRIPTION	