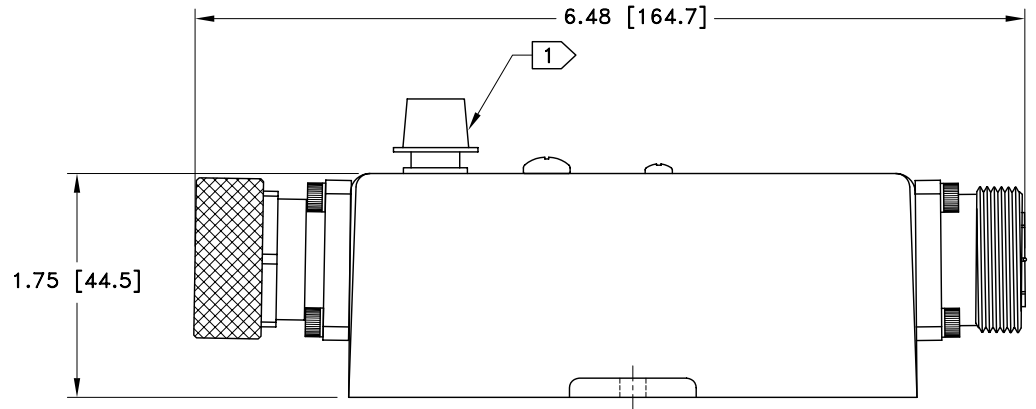
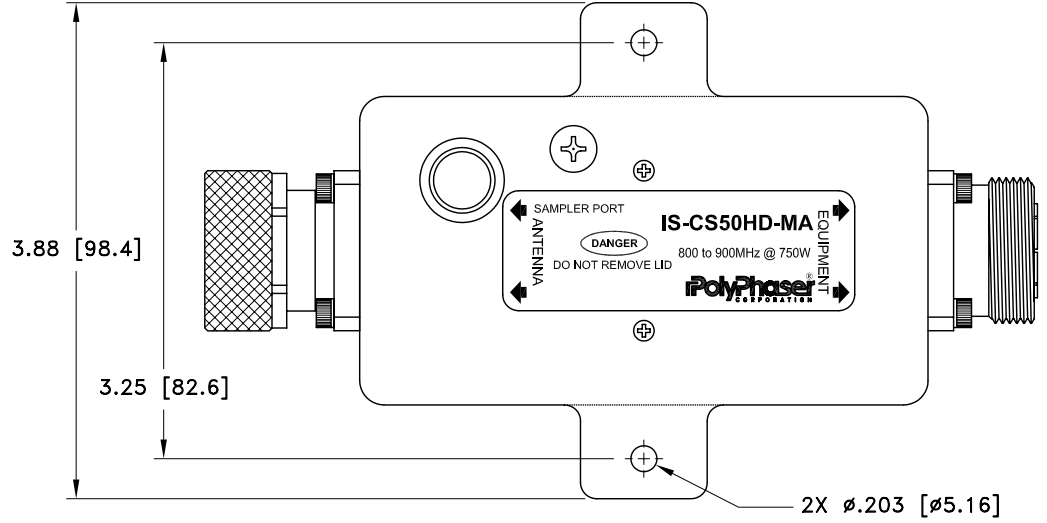
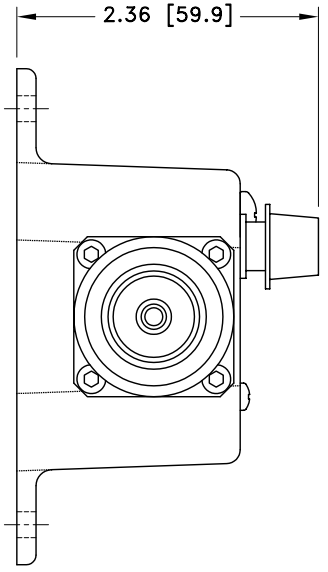


ALL DESIGN, OPERATIVE AND PROCESS DATA PERTAINING TO THE ARTICLE SHOWN ON THIS SHEET IS THE PROPERTY OF POLYPHASER CORPORATION. THE INFORMATION IS NOT TO BE COPIED, REPRODUCED, REVEALED TO OR APPROPRIATED BY OTHERS WITHOUT THE EXPRESS WRITTEN CONSENT OF POLYPHASER CORPORATION.

REVISIONS				
REV LTR	DATE	ENG	MKTG	Q.A.
A	05/31/01 ^{IB}	KCB	PH	RM
B	07/19/01 ^{IB}	JJ	PH	LJ
C	11/11/02 ^{IB}	JJ	SD	LJ



NOTES:

1) PROTECTIVE CAP OVER CONNECTOR.

MAXIMUM CHARACTERISTICS
APPLICATION: FLANGE MOUNT
FREQUENCY RANGE: 800MHZ TO 900MHZ
TURN-ON 1200Vdc Vt: 1800V
VSWR: ≤1.1:1 OVER FREQUENCY RANGE
INSERTION LOSS: ≤0.1dB OVER FREQUENCY RANGE
MAX POWER: 750W SINGLE CHANNEL
THROUGHPUT ENERGY: ≤6.5nJ FOR 3kA, 8/20μs WAVEFORM
OPERATING TEMPERATURE: -25°C TO +50°C
STORAGE TEMPERATURE: -25°C TO +50°C
RELATIVE HUMIDITY: 90% AT 40°C
VIBRATION: 1G AT 5Hz TO 100Hz

CUSTOMER APPROVAL: _____ DATE: _____
ALL DIMENSIONS SHOWN ABOVE ARE FOR REFERENCE ONLY.

DRAFTER C. GASPARINI	DATE 06/17/98	 P.O. BOX 9000, MINDEN, NV 89423-9000 (775) 782-2511 FAX (775) 782-4476 DWG NO/PART NO/DESCRIPTION IS-CS50HD-MA CUSTOMER PRINT			
MECH ENGINEER R. DUNNING	DATE 06/29/98				
ELEC ENGINEER K. BARTEL	DATE 06/24/98				
MARKETING - - - -	DATE - - - -				
QUALITY DEPT R. MATHEUS	DATE 06/24/98	CAGE CODE 61114	FILE NAME -C1	SCALE 1/1.5	SHEET 1 OF 1