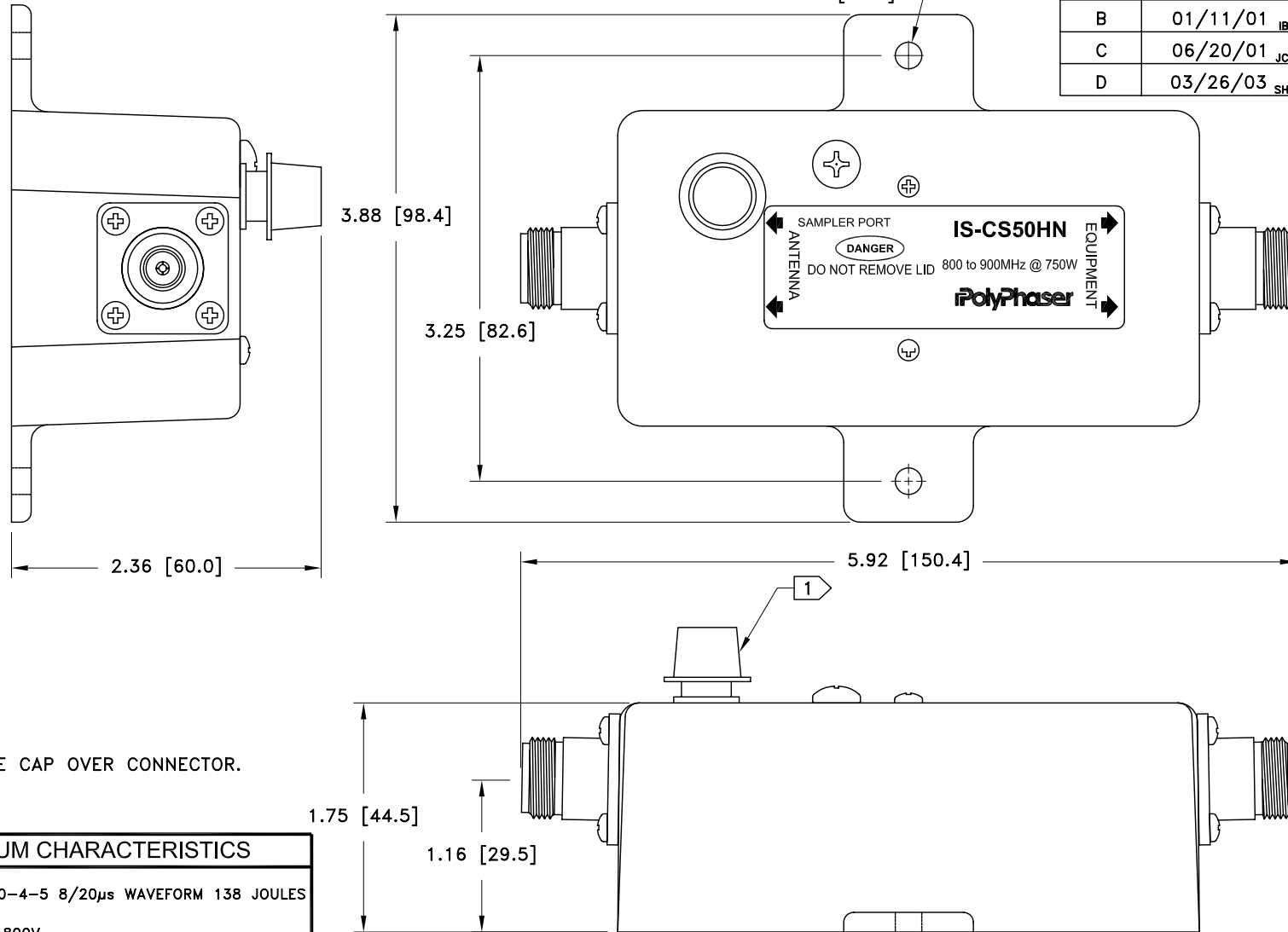


ALL DESIGN, OPERATIVE AND PROCESS DATA PERTAINING TO THE ARTICLE SHOWN ON THIS SHEET IS THE PROPERTY OF POLYPHASER CORPORATION. THE INFORMATION IS NOT TO BE COPIED, REPRODUCED, REVEALED TO OR APPROPRIATED BY OTHERS WITHOUT THE EXPRESS WRITTEN CONSENT OF POLYPHASER CORPORATION.

REVISIONS

REV LTR	DATE	ENG	MKTG	Q.A.
A	06/02/98 _{JC}	KCB	--	RM
B	01/11/01 _{IB}	KCB	PH	RM
C	06/20/01 _{JC}	RCD	PH	RM
D	03/26/03 _{SH}	RCD	SD	LJ



NOTES:

1) PROTECTIVE CAP OVER CONNECTOR.

CUSTOMER APPROVAL: _____ DATE: _____

ALL DIMENSIONS SHOWN ABOVE ARE FOR REFERENCE ONLY.

MAXIMUM CHARACTERISTICS
SURGE: 20kA IEC 1000-4-5 8/20µs WAVEFORM 138 JOULES
TURN-ON: 1200Vdc Vt: 1800V
TURN-ON TIME: 7ns FOR 2kV/ns
FREQUENCY RANGE: 800MHz TO 900MHz
VSWR: ≤1.1:1 OVER FREQUENCY RANGE
INSERTION LOSS: ≤0.1dB OVER FREQUENCY RANGE
MAX. POWER: 750W SINGLE CHANNEL
TEMPERATURE: -25°C TO +50°C STORAGE/OPERATING

DRAFTER J. CALLISTER	DATE 12/23/96
MECH ENGINEER -----	DATE -----
ELEC ENGINEER T. KULBIEDA	DATE 01/16/97
MARKETING -----	DATE -----
QUALITY DEPT R. MATHEUS	DATE 01/16/97

PolyPhaser
P.O. BOX 9000 MINDEN, NV 89423 TEL: 775-782-2511 FAX: 775-782-4476
DWG NO/PART NO/DESCRIPTION

IS-CS50HN
CUSTOMER PRINT

CAGE CODE 61114	FILE NAME -C1	SCALE 1/1.25	SHEET 1 OF 1
--------------------	------------------	-----------------	-----------------