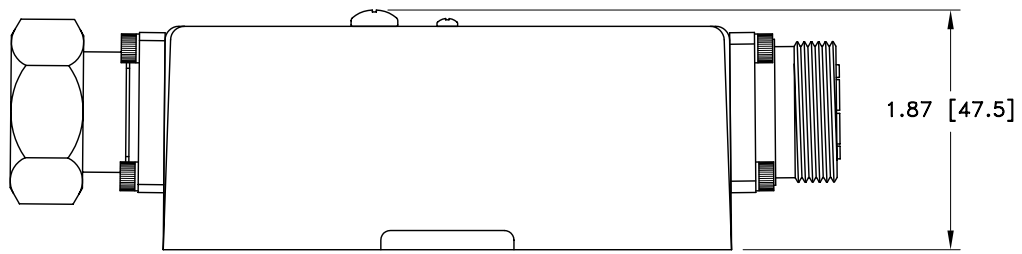
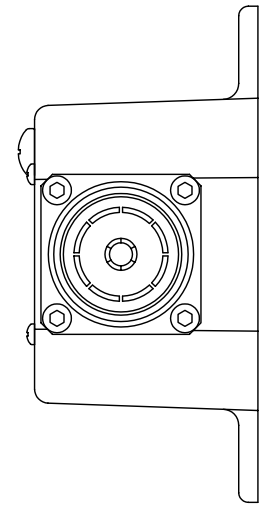
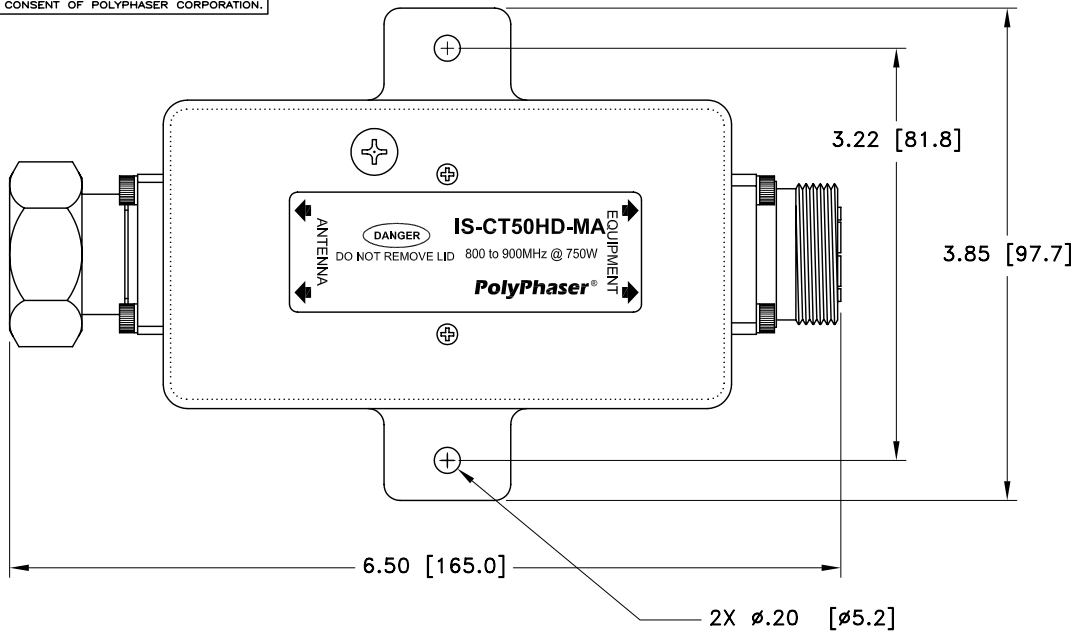


ALL DESIGN, OPERATIVE AND PROCESS DATA PERTAINING TO THE ARTICLE SHOWN ON THIS SHEET IS THE PROPERTY OF POLYPHASER CORPORATION. THE INFORMATION IS NOT TO BE COPIED, REPRODUCED, REVEALED TO OR APPROPRIATED BY OTHERS WITHOUT THE EXPRESS WRITTEN CONSENT OF POLYPHASER CORPORATION.

REVISIONS				
REV LTR	DATE	ENG	MKTG	Q.A.
A	01/12/01 <sub>IB</sub>	KCB	PH	RM



MAXIMUM CHARACTERISTICS	
APPLICATION: FLANGE MOUNT	
FREQUENCY RANGE: 800MHz TO 900MHz	
VSWR: ≤1.1 TO 1 OVER FREQUENCY RANGE	
INSERTION LOSS: ≤0.1dB OVER FREQUENCY RANGE	
POWER: 750W SINGLE CHANNEL	
THROUGHPUT ENERGY: ≤10μJ FOR 8/20μs WAVE FORM	
OPERATING TEMPERATURE: -25°C TO +50°C	
STORAGE TEMPERATURE: -25°C TO +50°C	
RELATIVE HUMIDITY: 90% AT 40°C	
VIBRATION: 1G AT 5Hz TO 100Hz	

CUSTOMER APPROVAL: \_\_\_\_\_ DATE: \_\_\_\_\_  
 ALL DIMENSIONS SHOWN ABOVE ARE FOR REFERENCE ONLY.

DRAFTER J. CALLISTER	DATE 02/11/98	<b>PolyPhaser®</b> P.O. BOX 9000, MINDEN, NV 89423-9000 (775) 782-2511 FAX (775) 782-4476 IS-CT50HD-MA CUSTOMER PRINT			
MECH ENGINEER R. DUNNING	DATE 02/17/98				
ELEC ENGINEER K. BARTEL	DATE 02/17/98				
MARKETING - - - - -	DATE - - - - -				
QUALITY DEPT R. MATHEUS	DATE 02/17/98	CAGE CODE 61114	FILE NAME -C1	SCALE 1/1.5	SHEET 1 OF 1