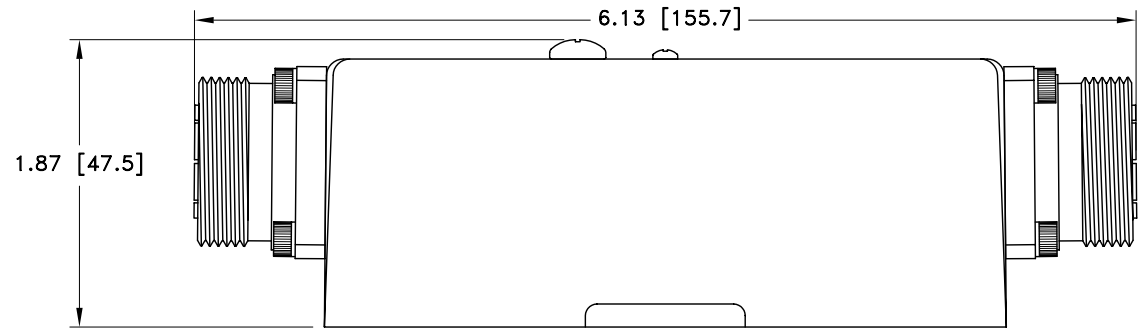
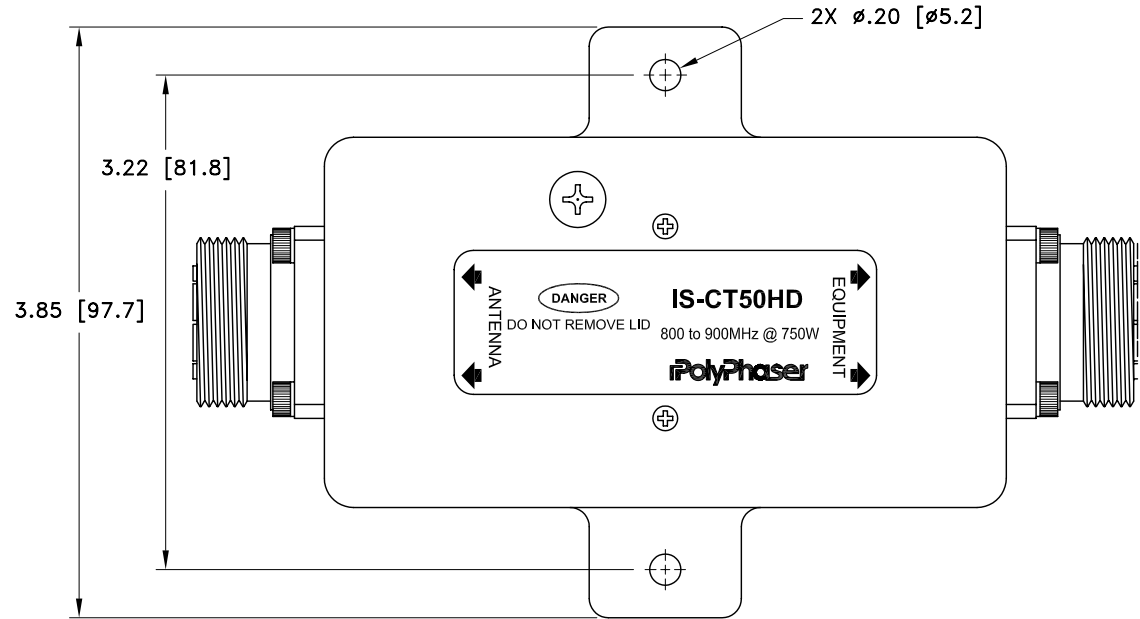
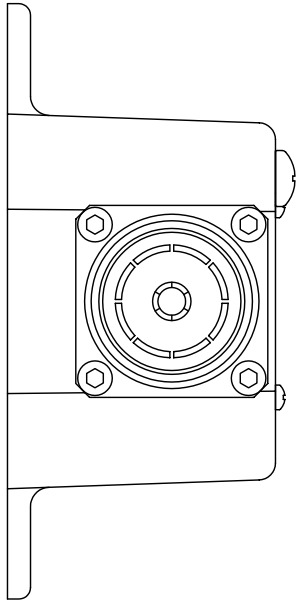


ALL DESIGN, OPERATIVE AND PROCESS DATA PERTAINING TO THE ARTICLE SHOWN ON THIS SHEET IS THE PROPERTY OF POLYPHASER CORPORATION. THE INFORMATION IS NOT TO BE COPIED, REPRODUCED, REVEALED TO OR APPROPRIATED BY OTHERS WITHOUT THE EXPRESS WRITTEN CONSENT OF POLYPHASER CORPORATION.

REVISIONS				
REV LTR	DATE	ENG	MKTG	Q.A.
B	01/12/01 _{IB}	KCB	PH	RM
C	03/05/03 _{IB}	JJ	SD	LJ



CUSTOMER APPROVAL: _____ DATE: _____

ALL DIMENSIONS SHOWN ABOVE ARE FOR REFERENCE ONLY.

DRAFTER C. GASPARINI	DATE 04/28/97
MECH ENGINEER ---	DATE ---
ELEC ENGINEER K. BARTEL	DATE 04/29/97
MARKETING ---	DATE ---
QUALITY DEPT R. MATHEUS	DATE 04/29/97

PolyPhaser

P.O. BOX 9000 MINDEN, NV 89423 TEL: 775-782-2511 FAX: 775-782-4476

IS-CT50HD
CUSTOMER PRINT

CAGE CODE 61114	FILE NAME -C1	SCALE 1/1.25	SHEET 1 OF 1
--------------------	------------------	-----------------	-----------------

MAXIMUM CHARACTERISTICS
APPLICATION: FLANGE MOUNT
FREQUENCY RANGE: 800MHz TO 900MHz
VSWR: ≤1.1:1 OVER FREQUENCY RANGE
INSERTION LOSS: ≤0.1dB OVER FREQUENCY RANGE
MAX. POWER: 750W, SINGLE CHANNEL
THROUGHPUT ENERGY: ≤10μJ FOR 8/20μs WAVEFORM
TURN-ON: 1200Vdc Vt=1800V
OPERATING TEMPERATURE: -25°C TO +50°C
STORAGE TEMPERATURE: -25°C TO +50°C
RELATIVE HUMIDITY: 90% AT 40°C
VIBRATION: 1G AT 5Hz TO 100Hz