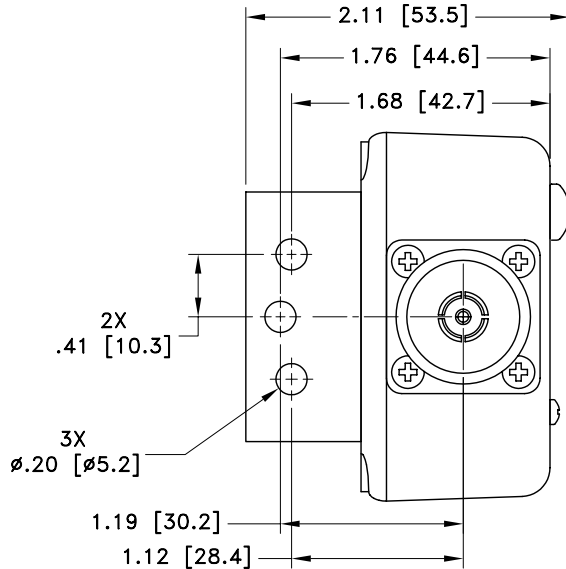
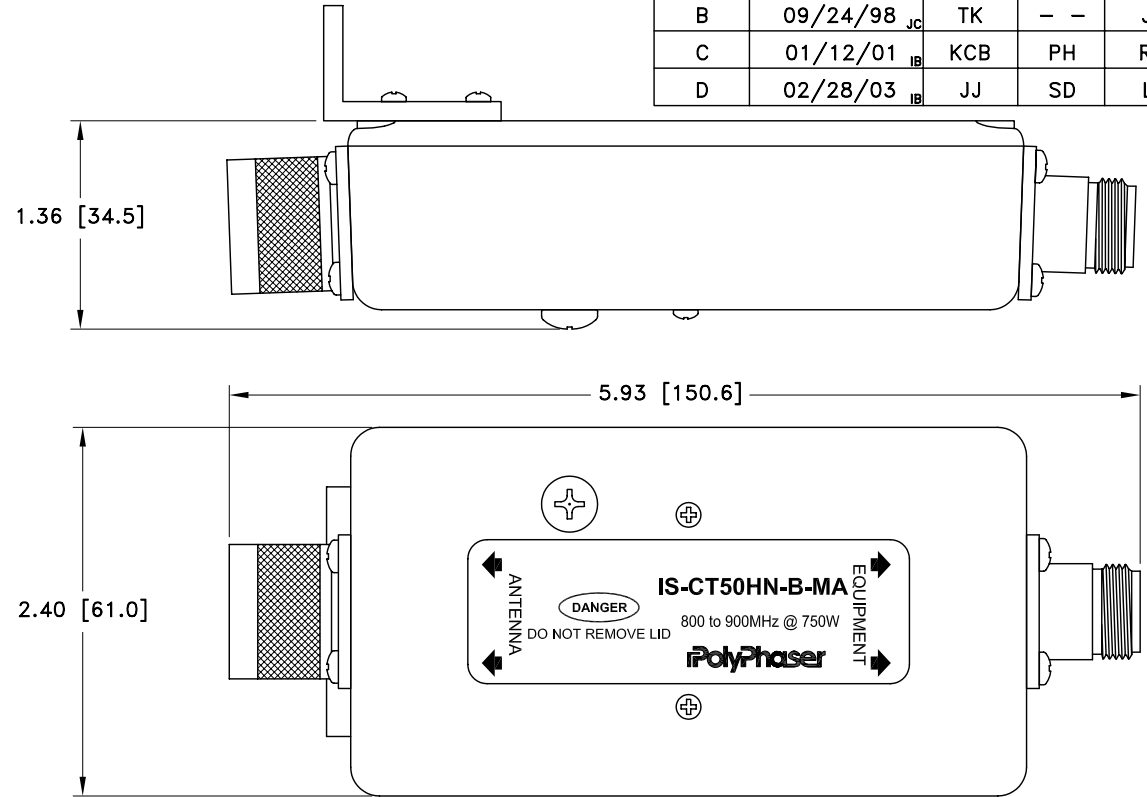


ALL DESIGN, OPERATIVE AND PROCESS DATA PERTAINING TO THE ARTICLE SHOWN ON THIS SHEET IS THE PROPERTY OF POLYPHASER CORPORATION. THE INFORMATION IS NOT TO BE COPIED, REPRODUCED, REVEALED TO OR APPROPRIATED BY OTHERS WITHOUT THE EXPRESS WRITTEN CONSENT OF POLYPHASER CORPORATION.

REVISIONS

REV LTR	DATE	ENG	MKTG	Q.A.
B	09/24/98 _{JC}	TK	--	JB
C	01/12/01 _{IB}	KCB	PH	RM
D	02/28/03 _{IB}	JJ	SD	LJ




MAXIMUM CHARACTERISTICS

APPLICATION:
BULKHEAD MOUNT
FREQUENCY RANGE:
800MHz TO 900MHz
VSWR:
≤1.1:1 OVER FREQUENCY RANGE
INSERTION LOSS:
≤0.1dB OVER FREQUENCY RANGE
POWER:
750W SINGLE CHANNEL
THROUGHPUT ENERGY:
10μJ FOR 8/20μs WAVEFORM
OPERATING TEMPERATURE:
-25°C TO +50°C
STORAGE TEMPERATURE:
-25°C TO +50°C
RELATIVE HUMIDITY:
90% AT 40°C
VIBRATION:
1G AT 5Hz TO 100Hz

CUSTOMER APPROVAL: _____ DATE: _____

ALL DIMENSIONS SHOWN ABOVE ARE FOR REFERENCE ONLY.

DRAFTER K. MUNRO	DATE 06/11/96	 P.O. BOX 9000 MINDEN, NV 89423 TEL: 775-782-2511 FAX: 775-782-4476 DWG NO/PART NO/DESCRIPTION IS-CT50HN-B-MA CUSTOMER PRINT			
MECH ENGINEER ---	DATE ---				
ELEC ENGINEER K. BARTEL	DATE 06/11/96				
MARKETING ---	DATE ---				
QUALITY DEPT R. MATHEUS	DATE 06/11/96	CAGE CODE 61114	FILE NAME -C1	SCALE 1/1.25	SHEET 1 OF 1