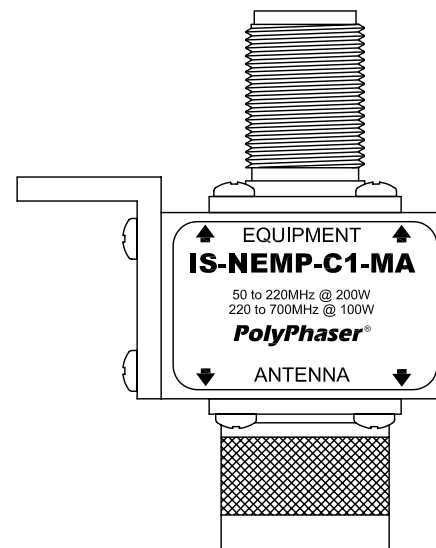
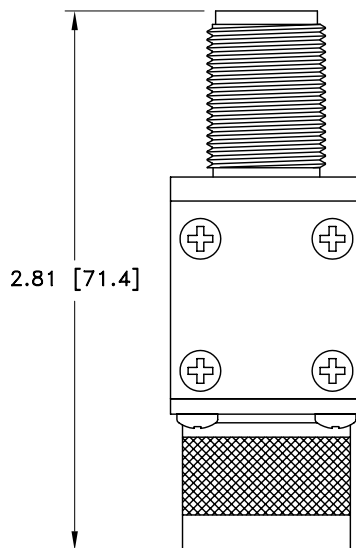
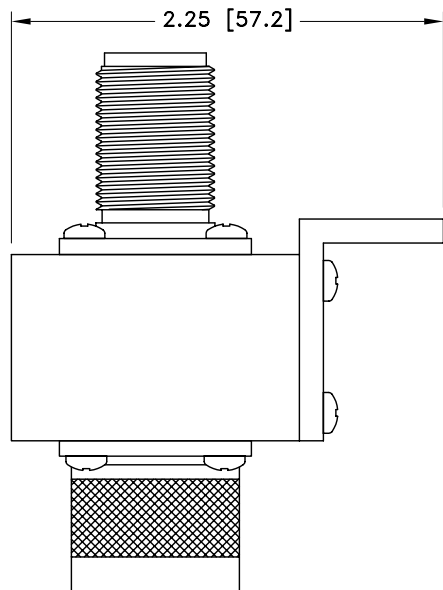


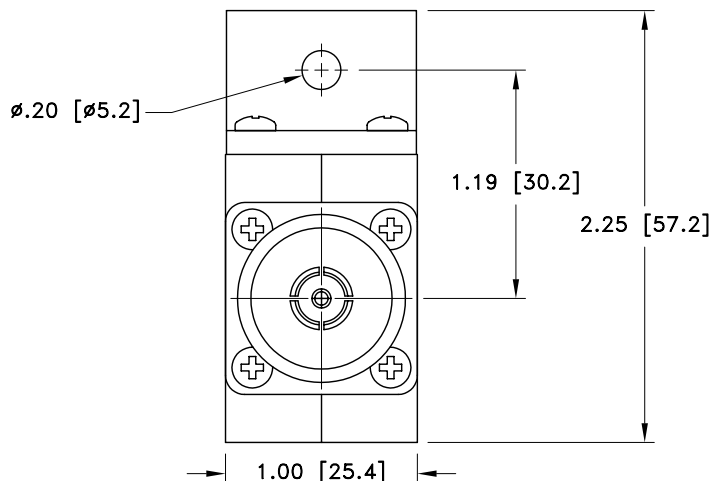
ALL DESIGN, OPERATIVE AND PROCESS DATA PERTAINING TO THE ARTICLE SHOWN ON THIS SHEET IS THE PROPERTY OF POLYPHASER CORPORATION. THE INFORMATION IS NOT TO BE COPIED, REPRODUCED, REVEALED TO OR APPROPRIATED BY OTHERS WITHOUT THE EXPRESS WRITTEN CONSENT OF POLYPHASER CORPORATION.

REVISIONS

REV LTR	DATE	ENG	MKTG	Q.A.
A	11/12/01	JJ	PH	RM



MAXIMUM CHARACTERISTICS	
SURGE:	50kA IEC 1000-4-5 8/20μs WAVEFORM 500 JOULES
TURN-ON:	+330Vdc ±20%
TURN-ON TIME:	<1.5ns FOR 2kV/ns
FREQUENCY RANGE:	50MHz TO 700MHz
MAX POWER:	VHF 200W UHF 100W
INSERTION LOSS:	≤0.1dB OVER FREQUENCY RANGE
VSWR:	≤1.2:1 @ 50 TO 60MHz ≤1.1:1 @ 60 TO 700MHz
VIBRATION:	1G @ 5Hz TO 100Hz
THROUGHPUT ENERGY:	≤313μJ FOR 8/20μs WAVEFORM
TEMPERATURE:	-45°C TO +85°C STORAGE/ OPERATING +50°C



CUSTOMER APPROVAL: \_\_\_\_\_ DATE: \_\_\_\_\_

ALL DIMENSIONS SHOWN ABOVE ARE FOR REFERENCE ONLY.

DRAFTER	S. HALL	DATE	10/12/99	<b>PolyPhaser®</b> P.O. BOX 9000, MINDEN, NV 89423-9000 (775) 782-2511 FAX (775) 782-4476 DWG NO/PART NO/DESCRIPTION <b>IS-NEMP-C1-MA</b> CUSTOMER PRINT			
MECH ENGINEER	M. MATTSON	DATE	03/20/00				
ELEC ENGINEER	K. BARTEL	DATE	03/20/00				
MARKETING	R. JUCHEM	DATE	03/21/00				
QUALITY DEPT	J. BERNARD	DATE	03/20/00				
CAGE CODE	61114	FILE NAME	-C1	SCALE	1/1	SHEET	1 OF 1