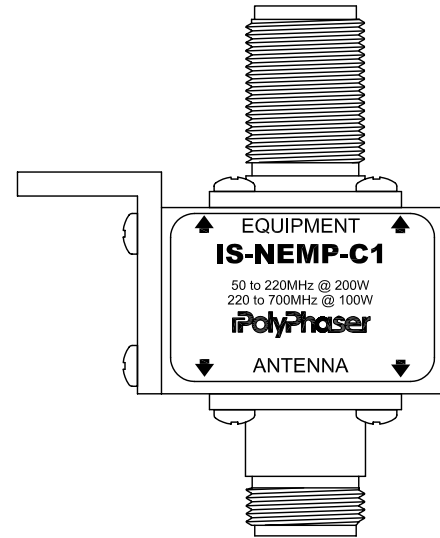
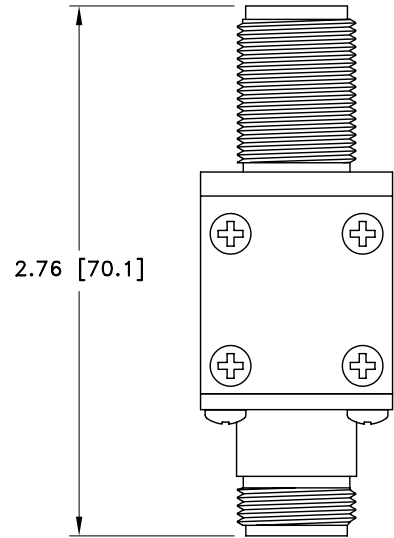
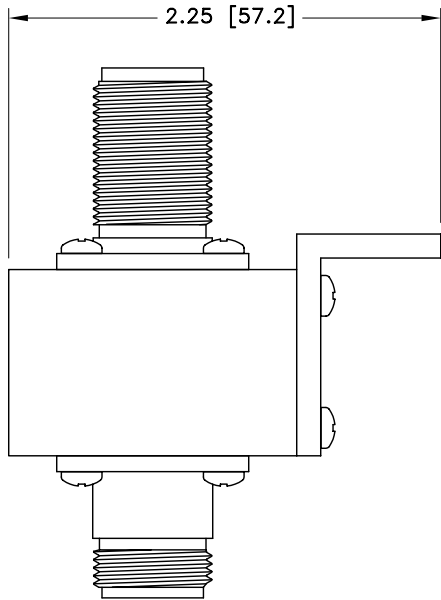
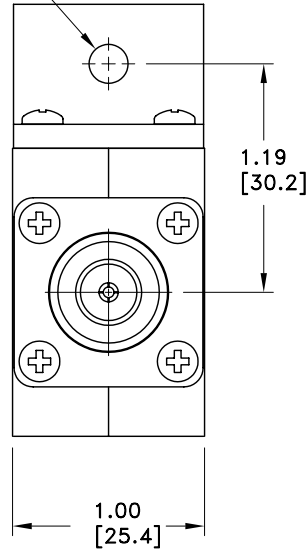


ALL DESIGN, OPERATIVE AND PROCESS DATA PERTAINING TO THE ARTICLE SHOWN ON THIS SHEET IS THE PROPERTY OF POLYPHASER CORPORATION. THE INFORMATION IS NOT TO BE COPIED, REPRODUCED, REVEALED TO OR APPROPRIATED BY OTHERS WITHOUT THE EXPRESS WRITTEN CONSENT OF POLYPHASER CORPORATION.

REVISIONS				
REV LTR	DATE	ENG	MKTG	Q.A.
B	10/08/99 <sup>SH</sup>	M.M	T.M	R.M
C	01/16/01 <sup>IB</sup>	KCB	PH	RM
D	02/24/03 <sup>SH</sup>	LC	SD	LJ



Ø.20 [Ø5.2]



### MAXIMUM CHARACTERISTICS

**SURGE:**  
50kA IEC 1000-4-5 8/20µs WAVEFORM

**TURN-ON:**  
+330Vdc ±20%

**TURN-ON TIME:**  
<1.5ns FOR 2kV/ns

**FREQUENCY RANGE:**  
50MHz TO 700MHz

**VSWR:**  
50 TO 60MHz: ≤1.2:1  
60 TO 700MHz: ≤1.1:1


**INSERTION LOSS:**  
≤0.1dB OVER FREQUENCY RANGE

**THROUGHPUT ENERGY:**  
≤570µJ FOR 8/20µs WAVEFORM

**TEMPERATURE:**  
-45°C TO +85°C STORAGE/ OPERATING +50°C

CUSTOMER APPROVAL: \_\_\_\_\_ DATE: \_\_\_\_\_

ALL DIMENSIONS SHOWN ABOVE ARE FOR REFERENCE ONLY.

DRAFTER M. HAUSMAN	DATE 04/24/95	 P.O. BOX 9000 MINDEN, NV 89423 TEL: 775-782-2511 FAX: 775-782-4476 DWG NO/PART NO/DESCRIPTION IS-NEMP-C1 CUSTOMER PRINT			
MECH ENGINEER - - - - -	DATE - - - - -				
ELEC ENGINEER J. JONES	DATE 04/24/95				
MARKETING - - - - -	DATE - - - - -				
QUALITY DEPT R. MATHEUS	DATE 04/24/95	CAGE CODE 61114	FILE NAME -C1	SCALE 1/1	SHEET 1 OF 1