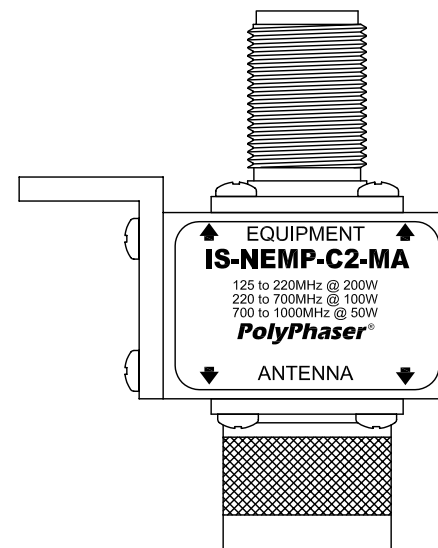
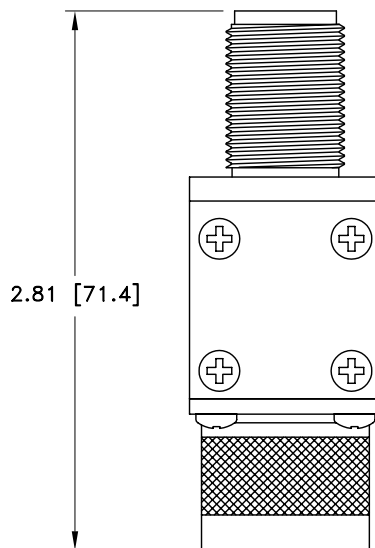
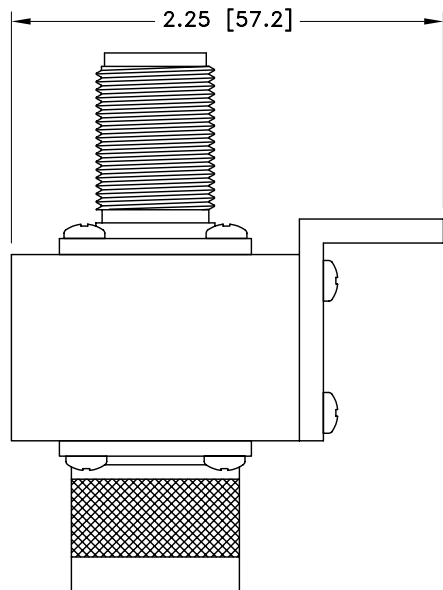


ALL DESIGN, OPERATIVE AND PROCESS DATA PERTAINING TO THE ARTICLE SHOWN ON THIS SHEET IS THE PROPERTY OF POLYPHASER CORPORATION. THE INFORMATION IS NOT TO BE COPIED, REPRODUCED, REVEALED TO OR APPROPRIATED BY OTHERS WITHOUT THE EXPRESS WRITTEN CONSENT OF POLYPHASER CORPORATION.

REVISIONS

REV LTR	DATE	ENG	MKTG	Q.A.
A	11/13/01	JJ	PH	RM



MAXIMUM CHARACTERISTICS

**SURGE:**  
50kA IEC 1000-4-5 8/20μs WAVEFORM 500J

**TURN-ON:**  
330Vdc ±20%

**TURN-ON TIME:**  
<1.5ns FOR 2kV/ns

**FREQUENCY RANGE:**  
125MHz TO 1000MHz

**VSWR:**  
≤1.1:1 OVER FREQUENCY RANGE

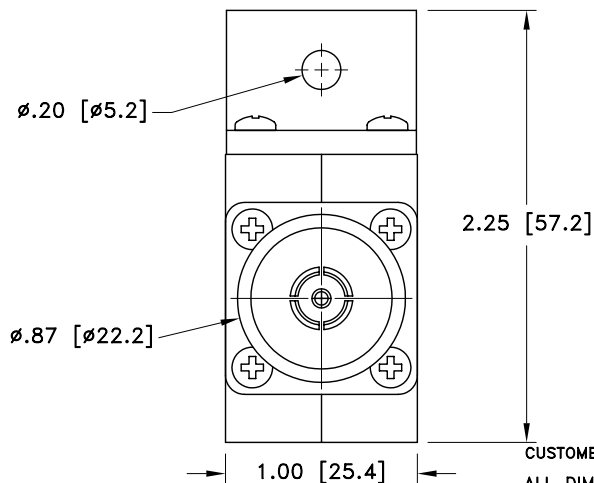
**INSERTION LOSS:**  
≤0.1dB OVER FREQUENCY RANGE

**MAX POWER:**  
VHF 200W  
UHF 100W  
800MHz TO 1GHz 50W

**THROUGHPUT ENERGY:**  
≤250μJ FOR 8/20μs WAVEFORM

**VIBRATION:**  
IG AT 5Hz TO 100Hz

**TEMPERATURE:**  
-45°C TO +85°C STORAGE/ OPERATING +50°C



CUSTOMER APPROVAL: \_\_\_\_\_ DATE: \_\_\_\_\_

ALL DIMENSIONS SHOWN ABOVE ARE FOR REFERENCE ONLY.

DRAFTER	S. HALL	DATE	09/10/99
MECH ENGINEER	P. SKROTZKI	DATE	09/23/99
ELEC ENGINEER	K. BARTEL	DATE	09/23/99
MARKETING	B. REED	DATE	09/22/99
QUALITY DEPT	J. BERNARD	DATE	09/22/99

**PolyPhaser®**  
P.O. BOX 9000, MINDEN, NV 89423-9000 (775) 782-2511 FAX (775) 782-4476  
DWG NO/PART NO/DESCRIPTION

IS-NEMP-C2-MA  
CUSTOMER PRINT

CAGE CODE	FILE NAME	SCALE	SHEET
61114	-C1	1/1	1 OF 1